

CELESTIAL  
AWAKENINGS  
ORACLE

ASTROLOGY FOR HEALING  
AND SOUL GUIDANCE

BY LUMI PELINKU

Illustrated by @BEINGWHOYOUWANT

© 2025 The Celestial Astrologer LLC

Published by Celestial Press

All rights reserved. No part of this publication may be reproduced, stored in a retrieval system, or transmitted in any form or by any means—electronic, mechanical, photocopying, recording, or otherwise—without prior written permission from the publisher, except for brief quotations in critical articles or reviews.

Celestial Press is an imprint of The Celestial Astrologer LLC.

Celestial Awakenings Oracle™ and The Celestial Method™ are trademarks of The Celestial Astrologer LLC, DBA Lumi Pelinku.

For permissions or licensing inquiries, visit: [www.lumipelinku.com](http://www.lumipelinku.com)

First Edition, 2026

Cover art by  BEINGWHOYOUWANT

Designs and Illustrations by  BEINGWHOYOUWANT

# CONTENTS

<i>Introduction</i> .....	1
<i>The Promise in Every Card</i> .....	4
<i>How to Use This Deck</i> .....	6
<i>How to Prepare for a Reading</i> .....	10
<i>Oracle Spreads</i> .....	13
<i>Awakening the Deck</i> .....	17
<i>Continue Your Celestial Journey</i> .....	21

## CELESTIAL ARCHETYPES

THE SUN .....	23
THE MOON .....	27
THE ASCENDANT .....	31
MERCURY .....	35
VENUS .....	39
MARS .....	43
JUPITER .....	47
SATURN .....	51
CHIRON .....	55
URANUS .....	59
NEPTUNE .....	63
PLUTO .....	67
NORTH NODE .....	71
SOUTH NODE .....	75

## ZODIAC SIGN CARDS

ARIES .....	79
TAURUS .....	83
GEMINI .....	87
CANCER .....	91
LEO .....	95
VIRGO .....	99
LIBRA .....	103
SCORPIO .....	107
SAGITTARIUS .....	111
CAPRICORN .....	114
AQUARIUS .....	118
PISCES .....	122

## HOUSES

1ST HOUSE .....	126
2ND HOUSE .....	128
3RD HOUSE .....	131
4TH HOUSE .....	134
5TH HOUSE .....	137
6TH HOUSE .....	140
7TH HOUSE .....	143
8TH HOUSE .....	146
9TH HOUSE .....	149
10TH HOUSE .....	152
11TH HOUSE .....	155
12TH HOUSE .....	158

## ASPECTS

CONJUNCTION .....	161
OPPOSITION .....	163
TRINE .....	165
SQUARE .....	167
SEXTILE .....	169
QUINCUNX .....	171

## FIRE SUIT

MARS IN ARIES .....	134
SUN IN ARIES .....	137
VENUS IN ARIES .....	140
SATURN IN LEO .....	143
JUPITER IN LEO .....	146
MARS IN LEO .....	149
MERCURY IN SAGITTARIUS .....	152
MOON IN SAGITTARIUS .....	155
SATURN IN SAGITTARIUS .....	158

## EARTH SUIT

JUPITER IN CAPRICORN .....	162
MARS IN CAPRICORN .....	165
SUN IN CAPRICORN .....	168
MERCURY IN TAURUS .....	171
MOON IN TAURUS .....	174
SATURN IN TAURUS .....	177

SUN IN VIRGO .....	180
VENUS IN VIRGO .....	183
MERCURY IN VIRGO .....	186

## AIR SUIT

MOON IN LIBRA .....	190
SATURN IN LIBRA .....	193
JUPITER IN LIBRA .....	196
VENUS IN AQUARIUS .....	199
MOON IN AQUARIUS .....	202
MERCURY IN AQUARIUS .....	205
JUPITER IN GEMINI .....	208
MARS IN GEMINI .....	211
SUN IN GEMINI .....	214

## WATER SUIT

VENUS IN CANCER .....	218
MERCURY IN CANCER .....	221
MOON IN CANCER .....	224
MARS IN SCORPIO .....	227
SUN IN SCORPIO .....	230
VENUS IN SCORPIO .....	233
SATURN IN PISCES .....	236
JUPITER IN PISCES .....	239
MARS IN PISCES .....	242

<i>About the Author</i> .....	173
-------------------------------	-----

# INTRODUCTION

Welcome, Starlight.

At nineteen years old, I booked my first tarot reading with a psychic—wide-eyed, devoted to astrology, and secretly craving answers. I didn't know it then, but that moment would become a defining initiation into the spirit realms...and the beginning of a lifelong understanding: that astrology is the divine structure guiding us through intuition, self-love, healing, and soul remembrance.

I left that reading feeling shaken. The psychic warned me of being blocked in love—of having the “evil eye” on me—and though I didn't understand the weight of those words, I felt them land in my chest like a stone I couldn't lift. At first, I believed her. But not for long.

There was a light inside my heart that refused to be dimmed. That reading didn't close a door—it opened one. I realized I didn't have to passively receive messages from the spirit world. I could interpret this cosmic language myself.

Back then, I was a hairstylist in the beauty industry, secretly studying astrology and tarot on the side, hiding my intuitive nature behind a façade of glossy perfection. But the more I filtered myself to make others feel comfortable, the more my own light dimmed. I found myself pulling fear-charged cards and searching for different outcomes—always hoping the next spread would say something better, something safer.

Eventually, I realized the answer wasn't in the cards themselves. It was in my own energy.

My intuition, once bright and open, had become cloudy with fear and doubt. I'd been living from a place of overprotection—seeking safety, avoiding risk, and disconnecting from the vibrant truth of my soul.

The shift came when I began anchoring into earthy rituals: crystals, color therapy, aromatherapy—tools that grounded me in my body and cleared my energy field. These practices helped me hear my inner wisdom again and opened the portal to embodying the cosmic messages I was receiving. I learned something powerful: Astrology is a guide to connecting with the stars while also teaching us

how they live inside our bodies, hearts, and lives. It's about us bringing Spirit's wisdom into our lived experience. We are the conduit of light, peace, and joy as we remember our inner radiance. Astrology is the soul map that brings you back to who you are.

You are a starlight in motion. And even when life feels dark, your birth chart holds the sacred memory of your radiance. Your planetary blueprint contains the strengths, challenges, and keys you need to move forward with clarity, grace, and purpose. Each planet, each sign, each aspect is encoded with light—color rays that awaken specific parts of your energetic field and guide you toward embodiment.

This deck was born from my own journey of remembrance. It is designed to help you awaken to the soul codes of astrology while also feeling supported, nourished, and grounded through your practice.

# THE PROMISE IN EVERY CARD

These cards hold either:

- ✧ An astrological insight
- ✧ A color ray for energy healing
- ✧ A crystal companion to support embodiment
- ✧ An affirmation to call your power back
- ✧ And a message to guide your present moment.

Whether you are new to astrology or well-versed in the stars, these cards will help you integrate the teachings of your birth chart in a way that is personal, intuitive, and soulful. This deck bridges the archetypal wisdom of astrology with modern healing—inviting you to read not just with your mind, but with your body and your heart.

You do not need to know all the answers today. You simply need to be willing to listen inwardly.

You are your own oracle.

And just like I discovered years ago in that small psychic shop, no card, no reading, no outside voice has the final say on your destiny. You do. Welcome to Celestial Awakenings Oracle. May this deck be a trusted companion as you walk the radiant path of your Soul-Centered Self.

With all my heart,

Lumi

# HOW TO USE THIS DECK

Your Celestial Mirror Awaits.

This oracle deck is a mirror, a map, and a moment of return—to yourself, to your cosmic rhythm, and to the wisdom of your Soul-Centered Self. The *Celestial Awakenings Oracle* was created to help you feel astrology in your body, anchor your spiritual journey into the present, and receive intuitive guidance through a grounded, sensory-based practice. Whether you are a seasoned stargazer or a curious soul just beginning, this deck meets you where you are and brings you back home to yourself.

## WHAT'S INSIDE

This deck is composed of five sacred categories, totaling 80 cards. Together, they form a celestial language—one that speaks directly to your energy, your evolution, and your embodied healing journey.

### **The Celestial Archetypes — 14 cards**

Planetary and nodal energies that serve as guiding forces and mythic mirrors for your evolution. Classic archetypes like The Sun appear alongside modern transmissions such as The Muse (Ascendant), The Healer (Chiron), The Wayfinder (North Node), and The Memory Keeper (South Node).

### **The Zodiac Cards — 12 cards**

Each zodiac sign becomes an archetype of soul lessons and elemental medicine—from Leo's courage to Pisces' compassion.

### **The House Cards — 12 cards**

The twelve life domains where soul growth unfolds: identity, devotion, creativity, intimacy, legacy, and more.

### **The Aspect Cards — 6 cards**

Energetic relationships between planets—harmony, tension, or transformation.

### **The Planet-in-Sign Cards — 36 cards**

Planetary energies expressed through zodiac filters, embodying nuanced cosmic frequencies.

### **Lineage and Innovation**

This structure is inspired by the ancient Chaldean Tarot, which divided wisdom into archetypes,

elements, and celestial forces. With a modern mystic twist, *Celestial Awakenings Oracle* anchors this timeless framework in astrology — making the planets, signs, houses, and aspects the foundation of the deck.

The Planet-in-Sign cards offer a way to connect with the energetic expression of the planets through the zodiac, echoing how tarot was originally designed to teach cosmic principles. If you notice that your exact natal placement isn't featured among these cards, know that it does not mean your placement is less significant or less powerful. These cards are not meant to cover every possible combination but to offer archetypal doorways into the wisdom of your birth chart.

Within this design, certain cards act as “bonus” transmissions essential for modern soul healing, including Chiron (*The Healer*), the Lunar Nodes (*The Wayfinder and The Memory Keeper*), the Ascendant (*The Muse*), the Twelve Houses, and the Aspect cards. Together, they expand the celestial language and mirror the lived realities of healing, transformation, and purpose — empowering you

to see your entire chart as a sacred map of becoming.

### **A Note on Language and Inclusivity**

Throughout this guidebook, you'll notice that I occasionally use gendered pronouns such as *she/he* or *her/him* when referring to the soul, archetypes, or life experiences. These expressions are used poetically, symbolically, and inclusively. Every archetype, energy, and message within this deck is available to all beings, regardless of gender, identity, or expression.

The celestial journey is a mirror for every soul.

# HOW TO PREPARE FOR A READING

Before pulling a card, take a quiet moment to connect inward. This is your sacred pause—the space where you tune into your own cosmic channel.

## SUGGESTED RITUAL

1. Cleanse your energy — with breath, sound bowls, chimes, crystals, or light visualization.
2. Create a sacred space — light a candle, lay a cloth, place a flower or a small bowl of water, and set your chosen crystal nearby. You may invite the four directions or call upon guides and ancestors in your own words.
3. Set your intention — whisper a prayer, speak aloud, or journal your question. Try:
  - ✧ “What does my Soul-Centered Self want me to know right now?”
  - ✧ “Where is energy ready to shift in my life?”
  - ✧ “How can I embody alignment today?”

4. Shuffle with presence — let your breath guide your pace. When you feel a subtle yes, cut the deck and draw.

## INTERPRETING YOUR CARDS

Every card offers a layered experience—a message, a visual meditation, an energetic frequency, and a tool for embodiment. You may feel drawn to the color ray, the crystal companion, a single phrase, or the affirmation. Trust what resonates in the moment.

### **You can:**

- ✧ Pull one card for a daily message
- ✧ Explore multi-card spreads
- ✧ Place cards on your altar or desk as energetic anchors
- ✧ Speak affirmation, visualize color rays, or hold your crystal as you integrate

This is a soul-led practice. There is no right way—only the way that brings you back to your center.

# PAIRING CARDS TOGETHER

## **Use card types to tell cosmic stories:**

- ✧ Archetype + House = Who you are becoming + where it unfolds
- ✧ Zodiac + Planet-in-Sign = A soul theme + its expression
- ✧ Aspect + Archetype + House = Energy dynamic + lesson + life area

The more you engage, the more the deck will respond like a trusted guide—personal, poetic, and precise.

# AFTER THE READING

## **Let the message settle in.**

- ✧ Speak the affirmation aloud
- ✧ Visualize the healing color ray filling your aura
- ✧ Work with the crystal or place it near your card
- ✧ Journal if you feel called

This deck invites presence, not prediction. You are here to witness your own energy, to feel it shift, integrate, and awaken.

# ORACLE SPREADS

## READING THE SKY WITHIN

The following spreads are energetic portals, each one offering a different level of reflection, healing, and intuitive activation. Some are simple daily tools, while others are more ceremonial, intended for times of transition or profound soul work. When working with spreads, placement matters. Each card position acts as an energetic mirror—revealing a layer of your inner sky. As you lay the cards before you, imagine yourself stepping into a constellation, each position shining as a guiding star.

### **Guidance on Placement**

Let the arrangement mirror the energy of the spread: a line for movement, a triangle for balance, an arc for initiation, a cross or star for wholeness. Adjust positions, rename layouts, or create your own. This is a living practice. You are the oracle.

# CELESTIAL MIRROR SPREAD

**Cards:** 3

**Theme:** Self-reflection and energetic alignment

## **Purpose**

A mirror for your aura and energetic field.

It reveals what you are radiating outward, what you are magnetizing inward, and how to restore harmony.

## **Card Placements**

1. What I'm currently projecting — the energy I am radiating into the world
2. What my Soul is calling in — what I am magnetizing and drawing toward me
3. How to recalibrate my energy — guidance to realign with my Soul-Centered Self

*Best used with The Muse (Ascendant) card, aura reflections, or after emotionally charged moments.*

## **Suggested Layout**



# COSMIC CHECK-IN SPREAD

**Cards:** 2

**Theme:** Simple clarity and intuitive alignment

**Purpose:**

A quick yet effective reading for daily or weekly reflection and lunar check-ins. It reconnects you to presence and flow.

**Card Placements**

1. Present energy
2. Cosmic advice

*Best for morning rituals, moonlit evenings, or moments when you need simplicity and grace.*

**Suggested Layout**



## 3. CELESTIAL INITIATION SPREAD

**Cards:** 6

**Theme:** Planetary wisdom and soul healing

### **Purpose**

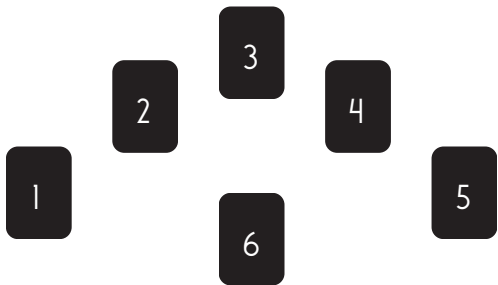
A ceremonial spread aligned with The Celestial Method™. Mirrors the archetypal pillars of your chart, offering a holistic view of identity, emotions, healing, and destiny.

### **Card Placements**

1. Sun — Identity and soul force (what is illuminated)
2. Moon — Emotional healing (needs, vulnerability, inner world)
3. Rising — Path forward (how to express or embody the next step)
4. Chiron — Healing invitation (where wounds become strength)
5. North Node — Destiny's edge (what your soul is stretching toward)
6. Integration message (how to weave these energies together now)

*Perfect for sacred ceremonies, birthdays, or intention-setting rituals.*

## Suggested Layout



## 5. SHADOW INTEGRATION SPREAD

**Cards:** 5

**Theme:** Soul healing through truth, tenderness, and transformation

### **Purpose**

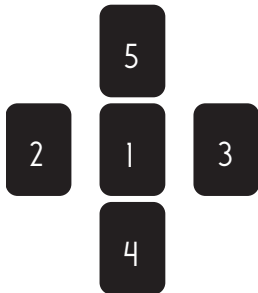
Invites you to witness, befriend, and alchemize the shadow—revealing hidden truths, reclaiming strengths, and restoring wholeness.

### **Card Placements**

1. What my shadow wants me to see
2. Where I've been hiding or withholding
3. A fear ready to be transformed
4. A hidden strength I'm reclaiming
5. A guiding light to move forward

*Especially potent during eclipses, Scorpio season, Pluto transits, or emotional breakthroughs.*

### **Suggested Layout**



# THE CELESTIAL PATH SPREAD

**Cards:** 4

**Theme:** Direction and divine next steps

## **Purpose**

Guides you through transitions and crossroads. It clarifies where you are now, what influences surround you, what is ready to be released, and how to step forward in alignment.

## **Card Placements**

1. Reveal: Where I am now
2. Radiate: What is influencing me
3. Rewire: What am I being asked to transform
4. Realize: My Soul-Centered next step

*Ideal during eclipses, retrogrades, or whenever you stand at a crossroads.*

## **Suggested Layout**



# AWAKENING THE DECK

## **Clearing the Celestial Channel**

Here we will attune your oracle to your energy, your essence, and your light. Before you begin working with your Celestial Awakenings Oracle, clear the field and awaken the deck to your unique vibration. Consider this an initiation into partnership with your Soul-Centered Self.

## **Why We Clear**

Your deck is a vessel that remembers. Each touch, thought, and reading imparts energy. Clearing allows you to:

- ✧ Remove energetic residue
- ✧ Open your heart and auric field to receive clearly
- ✧ Invite love, clarity, and alignment
- ✧ Reconnect with your Soul-Centered Self

## **Preparing Your Space**

There are many ways to create space for your reading. As I always say—do what feels right for you. Here is a listing of practices that can help you get started.

- ✧ **Location:** Choose a quiet space where you can sit comfortably. A small table, altar, or clean cloth will do.
- ✧ **Elements:** Candle (fire), small bowl of water (water), a leaf or flower (earth), feather or open window (air).
- ✧ **Sound:** Gentle chimes, tuning fork at the heart or crown, or a brief crystal bowl tone.
- ✧ **Aroma:** Rosemary, lavender, frankincense, or a single drop of an oil you love.
- ✧ **Crystals:** Selenite, clear quartz, or amethyst nearby.

## RITUAL STEPS

### 1. **Create a Sacred Space.**

Light the candle. Take three slow breaths. Name your intention for the space: clarity, kindness, truth. If it resonates, invite your guides, angels, or ancestors in your own words.

### 2. **Hold the Deck With Reverence.**

Place the deck between your palms at heart level. Breathe in golden-white light; breathe out any tension. Say: *"I awaken this deck in love and truth." May it be a sacred mirror for my soul's remembrance.*"

3. **Disperse Old Energy.** Knock gently three times on the deck or fan the cards like starlight across the cloth. Imagine any heaviness lifting and dissolving into light.

4. **Infuse With Intention.** Hover your hands over the deck. Visualize a column of white, violet, or gold light flowing from crown to heart to hands to cards. Speak: "May these cards reflect the light of my Soul-Centered Self. I welcome clarity, healing, and guidance in the highest alignment."

5. **Seal the Field.** Trace a small circle of light around the deck with your hand or fingertip. If using sound, chime once over the cards. If using an aroma, waft it through the space.

### **Optional Enhancements**

✧ Place selenite, clear quartz, or amethyst atop the deck overnight.

✧ Rest the deck beneath a moonlit window or beside your bed to attune to your rhythm.

✧ Sweep a tuning fork or singing bowl tone across the cards for vibrational renewal.

✧ Journal a single-sentence intention on a single slip of paper and tuck it beneath the deck in between readings.

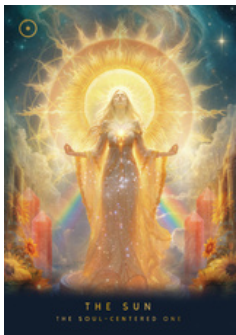
### **When to Repeat This Ritual**

- ✧ Before a new lunar cycle
- ✧ After intense or emotionally charged readings
- ✧ Following travel, illness, or energetic depletion
- ✧ During personal transitions, initiations, or reinvention

Let this be your reset—your moment of return.  
The clearer your energy, the clearer the message.

# CELESTIAL ARCHETYPES

THE CORE ENERGIES IN THE  
BIRTH CHART



# THE SUN

## THE SOUL-CENTERED ONE

### **Key Terms:**

- ◆ Radiance
- ◆ Authenticity
- ◆ Life Purpose

### **Visual Description**

A luminous figure stands bathed in golden light, arms outstretched in a gesture of sovereign surrender to the cosmos. Behind her, the blazing Sun radiates in concentric halos — a divine solar mandala illuminating all that she is.

She wears a flowing gown of starlit gold, as though the universe has woven itself through her being. From her heart center, a burst of solar fire shines outward, symbolizing the soul's truth emanating from within. At her feet, sunflowers rise in reverence, mirroring her light. Two rainbows arc across the sky, signaling joy, self-acceptance, and divine alignment. Four fiery crystals root her radiance into the Earth, anchoring spiritual purpose in embodied form.

## **Astrological Insight**

The Sun (Latin, Sol) is our life provider. It enhances our overall vitality and spreads endless radiance in our lives. It fuels our soul and emits light wherever it touches in the birth chart. In principle, this planetary body is our destination point, our overall soul essence. The Sun shows where we shine our birth charts, and it is the guiding point to our soul-centered connection.

In astrology, the Sun represents our journey, the core truth of who we are beneath the masks, roles, and wounds. It is the life force that fuels vitality, purpose, and creative will. The Sun in astrology is the light we came here to embody, grow into, and express with freedom. It speaks to your sacred “I Am”, the self unshaken by comparison or conformity. To align with your Sun is to remember that you are part of Creation itself, and you have the power to become the creator of your life. It begins by radiating your true self.

## **Card Message**

You are the Soul-Centered One, and it is time to stand in the light of your becoming. This card marks a season of inner sovereignty, where hiding no longer protects you, and playing small no longer feels safe. You were not born to dim — you were born to light up the world. The Soul-Centered One reminds you that your presence is

medicine. Your truth is needed. This is your moment to root more deeply in who you are and allow your truth to shine unapologetically. If you have been shrinking or being a wallflower, it's time to step out and trust your radiance. By honoring your essence, you invite others to do the same. You are not seeking the light. You are the light. Let yourself be seen.

### **Color Ray**

Orange — the ray of vitality, creative fire, and joy. Visualize this radiant light filling your solar plexus (*your core*) and heart, expanding outward with each breath. Let it restore courage, self-trust, and soul confidence.

### **Crystal Companion**

Carnelian — a stone of empowered expression and life force activation. Carnelian supports confidence, creativity, and grounded visibility. Meditate with it at your solar plexus to ignite your inner flame and reclaim your right to shine.

### **Affirmation**

“I am the Soul-Centered One. I radiate from my essence, and I trust the light I carry.”

## **The Celestial Method™ Practice: Solar Radiance Activation.**

Stand with your feet rooted and arms wide open. Close your eyes and envision a radiant orange ray streaming from the Sun above, pouring into your crown and flooding your entire being with light.

Hold a piece of carnelian at your solar plexus. Breathe deeply. With each inhale, say: "I receive my light." With each exhale, say: "I radiate my truth." Repeat the affirmation three times: "I am the Soul-Centered One. I radiate from my essence, and I trust the light I carry."

Let this light pulse through you — warming, awakening, and anchoring your soul signature into every cell.



# THE MOON

## THE SOUL DAUGHTER

### Key Terms:

- ◆ Inner Self
- ◆ Ancestral Healing
- ◆ Emotional Patterns

### Visual Description

Three figures appear in a synchronized alignment: a young woman in prayer at the base, an older woman with eyes closed in serene joy at the center, and an elder with silver hair radiating wisdom at the top. Together, they represent the sacred continuum of innocence, healing, and lineage — each phase holding memory within the body and soul. A radiant Full Moon glows behind them, encircled by its many phases — a mandala of time, embodiment, and cyclical transformation. Along the Moon's base are transparent flowers that bloom with a soft luminosity, symbolizing emotional emergence, memory, and the sacred blossoming of inherited wisdom.

## **Astrological Insight**

The Moon in astrology holds the key to our emotional world — our instinctual responses, subconscious needs, and early imprinting. It governs our sense of safety, belonging, and how we internalize care. But the Moon also carries something deeper: the emotional lineage of the matriarchal line, and the karmic memory our soul brings into this lifetime. It reflects not only what we experienced in our early life, but also the emotional patterns, coping mechanisms, and intuitive sensitivities that were shaped across our lifetimes.

The Moon is where we return when we need comfort — but it can also show the emotional cycles we've outgrown. In this lifetime, the Moon invites you to honor the past without being bound by it. It holds the wisdom of where you've been — ancestrally and karmically — but it also reminds you that healing comes through evolution. Working with lunar energy means feeling deeply, remembering gently, and choosing to grow beyond what was once your emotional truth. This is the path of soft liberation — the sacred journey from inherited feeling to soul-directed freedom.

## **Card Message**

You are the Soul Daughter — the one who came

to rewrite the emotional script. This card arrives as a mirror, asking: What emotions are you holding that are not fully yours? What pain are you ready to release back to the line it came from? To be the Soul Daughter is to feel with presence and to witness the wounded child within, not as broken, but as holy.

You were born with the strength to cradle your own heart, to speak the words you never heard, and to be the mother you needed. This is your permission to pause. To play. To grieve. To rest. In honoring your softness, you dissolve generations of silence. Your tenderness is alchemy. Your breath is a blessing. Your choice to feel is the healing of a thousand women before you.

## **Color Ray**

Silver — the sacred ray of emotional fluidity, reflection, and intuitive wisdom. Visualize a silver light cascading through your womb, heart, and throat, dissolving shame, softening tension, and weaving a new supportive thread into your lineage.

## **Crystal Companion**

Labradorite — the guardian of emotional boundaries and the gateway to intuitive sight. Labradorite helps you travel through ancestral memory and emotional undercurrents without becoming consumed by them.

Hold it close when journaling about family, meditating on your maternal line, or doing inner child healing. Let it be your lighthouse in times of uncertainty.

### **Affirmation**

“I am the Soul Daughter. I honor my emotions, heal through softness, and reclaim my ancestral light.”

### **The Celestial Method™ Practice: Moonline Softening Ritual.**

Sit in stillness with a piece of labradorite. Close your eyes and imagine a luminous thread of silver light connecting your heart to your mother's, her mother's, and so on — a shimmering maternal line stretching through time.

With each breath, send forgiveness, grace, and tenderness down the thread. Whisper softly: “I choose to feel. I choose to soften. I choose to heal.” Imagine that line glowing brighter with each breath, until it radiates with silver starlight — a healed moon line, alive in your body.

Seal the ritual by wrapping your arms around yourself and saying, “I am held. I am whole. I am the one who heals.”



# THE ASCENDANT

## THE MUSE

### **Key Terms:**

- ◆ Identity
- ◆ Aura
- ◆ Self Expression

### **Visual Description**

A radiant figure emerges from cosmic light, her face turned upward in serene confidence as starlight streams through her hair. At her chest, a prism of white light bursts outward in a radiant rainbow glow, illuminating the space around her. Along her form, soft peonies bloom, their petals layered and luminous, symbolizing beauty, renewal, and the unfolding of authentic self-expression. Behind her swirl galaxies, nebulae, and spiraling clouds of cosmic energy. Her presence is ethereal yet grounded, embodying the mystery of becoming and the artistry of self-expression. Crystalline towers shimmer at the edges like pillars of light, reminding us that the

aura is both a canvas and a shield. She stands as a vision of possibility, inviting us to consider how we choose to shine in the world.

## **Astrological Insight**

In astrology, the Ascendant — also called the Rising Sign — is our outer expression, the aura we project, and the energy others first encounter when they meet us. It filters how our Sun, Moon, and planets are expressed outwardly. The Ascendant is both the lens through which the world sees us and the gateway of how we experience life.

The Ascendant is the dynamic field of becoming. Unlike the fixed essence of the Sun or the inner memory of the Moon, the Ascendant is changeable — ever adapting to context, cycles, and growth. It reveals both your invitation to the world and your challenge: to project an image that truly reflects your soul rather than one built on fear or expectation.

## **Card Message**

The Muse invites you to reimagine your self-expression. This card arrives when your aura is asking for recalibration — when the image you project may no longer match the truth within. It is a gentle nudge to release masks, cleanse your energetic field, and allow your authenticity to shine through.

Like a prism bending light into a rainbow, your Ascendant reflects many possible paths and versions of yourself. The Muse reminds you that self-expression is true resonance. It is the art of letting go of performance and allowing your inner self to radiate freely. When you step into alignment, your presence becomes magnetic, not because you are trying to be “seen”, but because you are embodying your natural frequency. This card is your permission to become the muse of your own life. Allow yourself to be seen as you truly are — radiant, dynamic, and ever-evolving.

### **Color Ray**

Prism White — the ray of clarity, purity, and wholeness. Imagine a cascade of rainbow light washing through your aura, cleansing distortions and restoring harmony to your energetic field.

### **Crystal Companion**

Selenite — a crystal of cleansing and illumination. It clears stagnant energy and refreshes the aura, creating space for light to flow freely. Place it above your crown, keep a wand near your doorway, or sweep it gently along your body to restore balance and radiance.

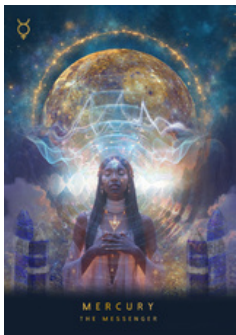
### **Affirmation**

“My aura is clear, radiant, and aligned with my Soul-Centered Self.”

## **The Celestial Method™ Practice: Aura Cleansing Ritual.**

Stand before a mirror or close your eyes in meditation. Hold a piece of selenite and visualize a column of white prismatic light streaming through your crown and cascading down your body, encircling your aura in shimmering radiance.

Whisper the affirmation three times: “My aura is clear, radiant, and aligned with my Soul-Centered Self.” Imagine rainbow light filling your field, softening any harsh edges, and revealing your most authentic presence to the world.



# MERCURY

## THE MESSENGER

### Key Terms:

- ◆ Ideas
- ◆ Communication
- ◆ Clarity

### Visual Description

Beneath the radiant presence of Mercury in the sky, a figure stands with hands gently crossed over the heart, emanating poise and centered awareness. Her forehead glows with a starry mark, symbolizing the awakened mind and the inner channel of intuition. Around her, waves of luminous sound and light ripple outward like cosmic frequencies, suggesting the transmission of thought, word, and energy. Behind the figure, the golden planet shimmers with intricate textures, ringed by radiant arcs of energy. Sodalite towers rise on either side like guardians of wisdom, anchoring the ethereal frequencies into grounded clarity. The entire image pulses

with vibrancy, bridging heaven and earth, thought and embodiment, silence and speech.

### **Astrological Insight**

Mercury is the swift messenger of the cosmos, governing thought, communication, learning, and perception. It represents how we process information, express ourselves, and connect through dialogue, writing, and movement. In mythology, Mercury (aka Hermes) is the traveler between worlds, carrying messages between gods and mortals — a bridge between the conscious and unconscious. With Mercury's ability to travel across realms, it reveals how we can access our intuitive power.

Mercury in astrology displays clarity and presence in how you communicate — both outwardly with others and inwardly with yourself. This planet also highlights that communication is not only verbal, but lives in gestures, energy, silence, and intuition.

### **Card Message**

The Messenger arrives to remind you of your voice, your ideas, and your ability to connect. This card invites you to refine how you speak your truth, clear away distortions, and trust that your message matters. Whether through conversation, writing, teaching, or creative expression, you are being asked to share with honesty and intention.

Mercury is here to help you learn about the importance of listening. It also reminds you that words without presence lose their power. By quieting mental noise, you allow your communication to carry the weight of authenticity. If confusion has clouded your path, this card is a sign that clarity is on the horizon. Your voice is a frequency. When aligned, it resonates like music, drawing others into harmony with your truth. Step into that frequency now.

### **Color Ray**

Lemon Yellow — the ray of clarity, intellect, and illumination. Visualize this bright yellow light filling your mind, sharpening your awareness, and clearing mental fog. Allow it to bring neutrality or joy into your mental space.

### **Crystal Companion**

Sodalite — the stone of truth and insight. Sodalite enhances rational thought, intuition, and self-expression, while quieting mental chatter. Keep it near your throat chakra when speaking, or hold it in your hand during writing or meditation to align thoughts with clarity and confidence.

### **Affirmation**

“My voice is clear, my mind is centered, and my truth flows with ease.”

## **The Celestial Method™ Practice: Frequency Alignment Breath.**

Sit comfortably with a piece of sodalite near your throat. Close your eyes and imagine a ray of lemon yellow light streaming into your mind, dissolving fog and confusion.

With each inhale, breathe in clarity. With each exhale, release distortion. When you feel centered, whisper the affirmation three times: “My voice is clear, my mind is centered, and my truth flows with ease.” Carry this clarity into your words, knowing your message embodies light.



# VENUS

## THE MIRROR

### Key Words:

- ◆ Grace
- ◆ Love
- ◆ Beauty

### Visual Description

A woman sits gracefully at the river's edge, her posture calm and regal, wrapped in golden light. In her hand, she holds an ornate mirror, gazing into her reflection with quiet reverence. Beyond her, several waterfalls cascade from towering cliffs, their endless flow symbolizing abundance, renewal, and the ceaseless currents of love. Above her, the planet Venus glows in a radiant sky, casting warmth and harmony over the scene.

At her side rests an open shell cradling a luminous pearl — a symbol of inner worth and divine femininity. Green crystals glimmer near the water's edge, anchoring the energy of compassion and truth. The entire landscape is

bathed in hues of gold, lavender, rose, and green, enveloping the scene in beauty, serenity, and a deep sense of devotion to oneself.

### **Astrological Insight**

Venus in astrology is the planet of love, femininity, attraction, beauty, and self-worth. It governs what we value, how we give and receive affection, and the ways we create harmony in our lives. Venus reveals both our desires and our standards — what we hold dear in love, creativity, and relationships.

Venus energy is first and foremost an inner experience. Love and beauty begin within and radiate outward. If you struggle with self-worth or comparison, Venus asks: What are you reflecting to yourself? Do you honor your own value before seeking it in others? This card highlights that the relationships we cultivate mirror the relationship we have with ourselves.

### **Card Message**

The Mirror arrives as a gentle invitation to honor your beauty and embrace your worth. This card asks you to pause and notice how you are viewing yourself: with love or with judgment? Venus reminds you that what you see in others is often a reflection of what you have yet to acknowledge

within yourself. This card also speaks to relationships. When Venus energy is present, you are being guided to seek harmony, compassion, and reciprocity. If you are attracting imbalance, The Mirror shows you where you can bring gentleness to your own heart. In self-love, you become magnetic.

The Mirror reveals the need to reflect on what beauty and values mean to you and how you see yourself, without filters or perfection. This card is here to remind you that you are already a living work of art and that you never need to question your worth. When you love what you see within, the outer world reflects that love back to you tenfold.

### **Color Ray**

Green — the ray of love, compassion, and healing. Visualize this vibrant green light filling your heart and radiating outward, soothing self-judgment and restoring harmony in your relationships.

### **Crystal Companion**

Jade — a stone of self-love, prosperity, and harmony. Jade invites peace, balance, and abundance while nurturing a sense of worthiness. Carry jade near your heart, wear it as jewelry, or

place it on your altar to awaken compassion and draw love in all its forms.

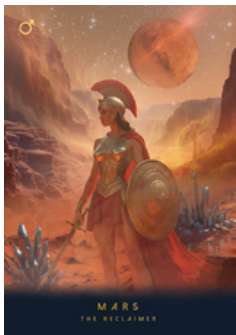
### **Affirmation**

“I honor my beauty, my worth, and the love that flows within me.”

### **The Celestial Method™ Practice: Heart Reflection Ritual.**

Sit before a mirror with a piece of jade in your hand. Gaze softly into your own eyes and visualize a green ray streaming from your heart and surrounding your reflection in light.

Whisper the affirmation three times: “I honor my beauty, my worth, and the love that flows within me.” Allow yourself to feel the resonance of self-love expanding in your aura, clearing out old judgments and inviting new harmony.



# MARS

## THE RECLAIMER

### Key Words:

- ◆ Power
- ◆ Action
- ◆ Motivation

### Visual Description

In a vast, red desert canyon, a warrior stands poised and determined, clad in golden armor and a crimson cape that flows behind her. In one hand, she holds a gleaming sword, in the other a round shield engraved with protective symbols. Her helmet crests proudly with a red plume, symbolizing courage, vigilance, and readiness.

Behind her, the planet Mars looms large in the rust-hued starry sky, casting its fiery presence over the land. Around her feet, clusters of crystalline formations pierce upward as molten shards solidified into strength, echoing her grounded power. The scene is alive with heat, dust, and focus. It is a reminder that Mars energy

is a raw, unapologetic force, demanding clarity of will.

### **Astrological Insight**

Mars is the planet of masculinity, drive, action, and assertion. It governs how we pursue our goals, express our desires, and defend our boundaries. Known as the cosmic warrior, Mars fuels passion and courage, but also teaches us about conflict and the importance of channeling energy constructively.

Mars prompts you to recognize how you project power. It also highlights where you may have surrendered your strength, whether through fear, hesitation, or over-accommodation, and urges you to step forward with clarity. Mars reminds us that anger, when used wisely, is sacred fuel for transformation. This energy is not about destruction but reclaiming: taking back your fire, your space, and your right to move boldly toward your truth.

### **Card Message**

The Reclaimer calls you into action. This card signals that it is time to stop waiting for permission and to assert your needs, desires, and direction. Where have you been silenced? Where have you abandoned your own will to keep the peace? The Reclaimer challenges you to step

beyond hesitation and embody your authority. Conflict may arise under Mars energy, but it reveals where truth has been suppressed. By facing it, you create space for integrity. This card is also a reminder that boundaries are acts of love — love for yourself, and for the relationships that flourish when honesty is honored.

The Reclaimer is not reckless, but strategic. She knows when to wield her sword and when to stand firm in defense. You are being called to embrace that discernment, to recognize your strength, and to trust the fire within you as a guide to action.

### **Color Ray**

Crimson Red — the ray of vitality, courage, and decisive action. Visualize this deep red light igniting your core, filling your body with heat and determination, and energizing your will to act.

### **Crystal Companion**

Magnetite — a grounding stone of strength, balance, and magnetism. Magnetite draws scattered energy into alignment and empowers clear boundaries. Hold it when you need courage in conflict, carry it to strengthen your aura, or place it near your root chakra to ground fiery energy into steady resilience.

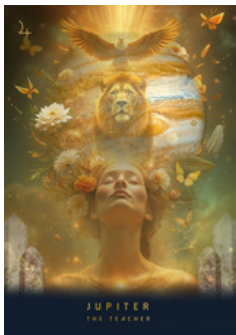
## **Affirmation**

“I reclaim my power with courage. My boundaries are sacred, my fire is my strength.”

## **The Celestial Method™ Practice: Power Reclamation Stance.**

Stand tall with feet planted firmly on the ground. Hold a piece of magnetite in one hand, imagining a crimson red ray igniting your solar plexus and flowing through your body.

Visualize this red light expanding outward, surrounding you like a shield. Speak the affirmation three times: “I reclaim my power with courage. My boundaries are sacred, my fire is my strength.” Feel the energy anchor into your body, awakening confidence and clarity of will.



# JUPITER

## THE TEACHER

### Key Terms:

- ◆ Knowledge
- ◆ Expansion
- ◆ Possibility

### Visual Description

A serene figure lifts her face upward, bathed in golden light, as if receiving wisdom from the heavens. Around her crown bloom radiant white and orange flowers, symbols of growth, abundance, and blossoming truth. Rising above her is a majestic lion, embodying courage, sovereignty, and heart-centered leadership.

Soaring overhead, an eagle spreads its wings wide, symbolizing vision, freedom, and spiritual perspective. Surrounding them, a constellation of butterflies in the air, carrying the essence of transformation and liberation. Behind them, the great planet Jupiter dominates the sky, swirling with storms and light, its infinite presence signals

limitless experiences. Crystalline pillars shimmer on either side, forming gateways to higher realms. Together, the lion, eagle, butterflies, and flowers weave a vision of courage, wisdom, and growth, each one a guidepost on the path of learning and truth.

### **Astrological Insight**

Jupiter is the planet of expansion, wisdom, and growth. Known as the “greater benefic,” it governs philosophy, spirituality, abundance, and truth seeking. Jupiter stretches horizons, inviting us to rise beyond limitation and embrace the larger meaning of our experiences. It is the energy of the eternal student and teacher, both learning and transmitting knowledge, that uplifts and inspires.

Jupiter’s role is that of the cosmic guide, calling you to look beyond the immediate moment to the wisdom it holds. It reveals the silver lining in our journey whenever we feel lost. This planet reveals what you are ready to learn, teach, or expand into a new level of understanding. Jupiter asks: Where is life calling you to grow? What higher truth is waiting to be integrated?

### **Card Message**

The Teacher arrives to remind you that wisdom is both a gift received and a gift shared. This card

signals a time of expansion — whether through study, mentorship, or stepping into your own role as a guide. It is a call to open your mind, to explore, and to trust that your path has meaning beyond what is visible now.

This is also a card of abundance. When Jupiter's energy flows, opportunities multiply. The Teacher urges you to trust in possibility, to walk with optimism, and to remember that life expands in proportion to your willingness to believe in it. If doubt has clouded your path, this card is a promise: your growth is inevitable, your wisdom hard-earned, and your future bright. Stand tall like the lion, soar high like the eagle, and move gently like the butterflies. You are both student and teacher, forever expanding.

### **Color Ray**

Turquoise — the ray of wisdom, healing, and expansive truth. Visualize turquoise light filling your aura, opening your heart and mind to new perspectives, and guiding you toward higher understanding.

### **Crystal Companion**

Sugilite — a stone of spiritual wisdom and higher learning. It deepens the connection to truth and enhances clarity of purpose while shielding against negativity. Meditate with it when seeking

guidance, keep it close during study, or place it on your altar to expand your spiritual awareness.

### **Affirmation**

“I walk in wisdom, abundance, and truth. My path expands with clarity and purpose.”

### **The Celestial Method™ Practice: Expansion Breath.**

Sit in a comfortable position, holding a piece of sugilite in your non-dominant hand. Close your eyes and imagine a radiant turquoise ray expanding from your crown area, flowing outward like ripples across water. With each inhale, breathe in wisdom. With each exhale, release limitation.

Whisper the affirmation three times: “I walk in wisdom, abundance, and truth. My path expands with clarity and purpose.” Feel your energy field widen, opening to Jupiter’s boundless blessings.



# SATURN

## THE GUARDIAN

### Key Terms:

- ◆ Lessons
- ◆ Discipline
- ◆ Boundaries

### Visual Description

A regal woman cloaked in deep indigo stands within a grand, cathedral-like hall, framed by ornate golden arches. She gazes steadily forward, her presence dignified and resolute. Upon her head rests an intricate silver crown, studded with jewels that shimmer like constellations, symbolizing sovereignty and inner authority.

Above her, Saturn hovers, half-veiled in a thick mist laden with stars, its luminous rings radiating through the cosmic haze. This celestial vision breaks through the vaulted space as if time itself has opened a portal. Around her, crystalline pillars glow softly, offering stability and grounding. To her side, a black cat with striking golden eyes

watches with vigilance, a companion of mystery and guardianship. The entire scene is bathed in deep indigo and midnight blue, infused with the gravity of Saturn's presence and the solemnity of cosmic law.

### **Astrological Insight**

Saturn is the planet of discipline, structure, and responsibility. Known as the "Lord of Time and Karma," Saturn governs the boundaries that protect us, the lessons that strengthen us, and the commitments that define our path. Where Jupiter expands, Saturn contracts and refines — teaching the sacred balance of freedom through responsibility. Saturn imparts lessons on how to honor your boundaries and step into mastery.

Saturn asks: What am I building that will endure? Where must I take responsibility, even if it feels heavy? Saturn's lessons may appear restrictive, but they are designed to ground your growth in integrity and endurance.

### **Card Message**

The Guardian arrives when you are being called to resilience. Life may feel weighty, but only because you are being shaped into greater strength and clarity. Every delay, obstacle, or boundary you encounter is an invitation to

The Guardian arrives when you are being called to resilience. Life may feel weighty, but only because you are being shaped into greater strength and clarity. Every delay, obstacle, or boundary you encounter is an invitation to

### **Color Ray**

Indigo — the ray of truth, discipline, and spiritual authority. Visualize indigo light enveloping you like a mantle, anchoring resilience and sharpening discernment.

### **Crystal Companion**

Smoky Quartz — is a stone of grounding, protection, and endurance. Smoky Quartz strengthens resilience during times of trial, dispels fear, and anchors stability. Keep it near when you face challenges, place it at your workspace to maintain focus, or carry it as a shield of integrity and strength.

## **Affirmation**

“I honor my boundaries and walk with integrity. Discipline is my strength, and mastery is my path.”

## **The Celestial Method™ Practice: Boundary Anchoring Ritual.**

Sit in a quiet space with a piece of smoky quartz in your hand. Close your eyes and envision an indigo ray forming a circle around you, glowing like starlight through mist.

Whisper the affirmation three times: “I honor my boundaries and walk with integrity. Discipline is my strength, and mastery is my path.” Feel the protective circle strengthen, rooting you in authority and calm. Allow Saturn’s guardianship to settle into your body — firm, wise, and enduring.



# CHIRON

## THE HEALER

### Key Terms:

- ◆ Wounds
- ◆ Wholeness
- ◆ Wisdom

### Visual Description

Inside a radiant crystal cave, a woman sits in meditation, wrapped in a soft garment that drapes around her like flowing light. She holds a glowing orb of golden-white energy in her hands — the flame of inner healing.

Towering amethyst crystals surround her, shimmering in violet hues that radiate both protection and illumination. Within one of the crystals behind her, a faint silhouette of her own figure emerges, reflecting her past pain—a reminder that the wounds of yesterday are still part of today's journey. Nearby rests an ornate mirror, symbolizing self-reflection, and beside it, a key, representing the passage to deeper truth

and the unlocking of inner wisdom. Above, a beam of light pierces through the cavern ceiling, bathing her in quiet grace. The scene evokes both tenderness and strength—a sanctuary where brokenness is transformed into beauty.

### **Astrological Insight**

Chiron, known as the “Wounded Healer,” represents our deepest pain and our sacred path to wholeness. In astrology, it symbolizes the wounds we carry and the art of transforming past pain into wisdom, compassion, and empathy. This asteroid placement in the birth chart reminds us of the humility we must cultivate as we become vulnerable in our life experiences. The challenges we face expand us, empowering us and filling us with promise as we transcend our past lessons.

As you work with Chiron, it signals you to witness your wounds with compassion rather than resentment or denial. Remember that healing doesn’t happen overnight—it is a lifelong process if handled with grace. This energy invites you to recognize that your wounds hold sacred medicine, both for yourself and to unveil the wisdom hidden inside the cracks of your experience.

## **Card Message**

The Healer arrives to remind you that your pain doesn't have to be your only reality, but your initiation. This card suggests you are at a threshold where your wounds, once immersed in shadow or uncertainty, are ready to be honored as part of your soul's truth. You are being guided to tend to the unresolved parts of your life, while also being given the key to finding your healing balm.

The wound opens in silence, but as you ignore it, the pain can become louder until it is tended to. As you lean into your wounds, you will find their source, and with this knowledge, it alchemizes you into your best version. If this card appears during a time of grief or vulnerability, know that healing is unfolding, even if it's happening quietly.

## **Color Ray**

Purple — the ray of spiritual healing, wisdom, and transformation. Envision purple light filling your body, soothing every ache, dissolving shame, and opening the door to inner wholeness.

## **Crystal Companion**

Amethyst — a stone of clarity, protection, and soul healing. Amethyst calms emotional pain, supports deep rest, and connects you to divine guidance. Place it on your heart in meditation, under your pillow for peace, or beside a mirror as a reminder of your resilience.

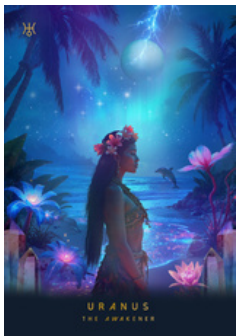
## **Affirmation**

“My wounds are teachers. Through compassion, I am whole.”

## **The Celestial Method™ Practice: Healing Light Meditation.**

Sit quietly with a piece of amethyst over your heart. Close your eyes and imagine a radiant purple ray streaming through you, softening tension and illuminating the places that have felt hidden or broken. Whisper the affirmation three times: “My wounds are teachers. Through compassion, I am whole.”

Visualize the mirror and key behind you — symbols that you already hold the truth and the passageway to your healing. Let the purple light seal your scars with grace, leaving you stronger, softer, and more whole.



# URANUS

## THE AWAKENER

### Key Terms:

- ◆ Chance
- ◆ Liberation
- ◆ Breakthrough

### Visual Description

On a tropical shore, a woman crowned with vibrant red and pink flowers stands in quiet anticipation, her body illuminated by the glow of an otherworldly aurora. She stands steadily with her eyes closed, trusting in herself, as a teal aurora ripples across the sky and lightning arcs through the heavens, signaling sudden change and revelation.

Above her, the planet Uranus hangs in the electric sky, radiating brilliance and cosmic originality. Around her, luminous flowers bloom in iridescent shades of blue, pink, and violet, reflecting the beauty born in moments of surprise. To her right, a joyful dolphin leaps from

the ocean, symbolizing freedom, trust, and the lightness that comes with embracing change. The entire landscape hums with possibility, reminding us that awakening is rarely comfortable, but always liberating.

## **Astrological Insight**

Uranus is the planet of innovation, rebellion, and awakening. Known as the cosmic disruptor, it brings sudden change, breakthroughs, and revelations that free us from outdated patterns. Uranus energy is electric, unpredictable, and liberating — it shakes what is stagnant so new pathways can emerge.

Uranus pushes you to take chances as you are standing at the edge of transformation. It asks: Where are you clinging to comfort at the expense of your growth? Are you willing to trust the unknown to discover new freedom? Uranus encourages you to find exhilaration in change rather than fear.

## **Card Message**

The Awakener calls you into liberation. This card arrives when life is ready to move in unexpected directions, breaking through stagnation with sudden clarity or change. Though Uranus energy may feel disruptive at first, it carries the medicine of freedom – the ability to reinvent yourself, your

path, and your truth. The dolphin's presence reminds you that innovation can be risky if unprepared, but joy follows as you trust in the unknown if you feel aligned and ready to take a chance. Trust that when you release outdated patterns and step into this next chapter, you will land in waters that carry you toward greater opportunities.

This card urges you to listen to the intuitive flashes, strange synchronicities, and unconventional opportunities presenting themselves now. This is your invitation to shed the old and welcome the surprising, the radical, the new. Freedom, after all, is found when you dare to awaken.

### **Color Ray**

Teal — the ray of liberation, innovation, and higher vision. Visualize teal light flowing through your aura, clearing rigidity and awakening fresh ideas, freedom, and possibility.

### **Crystal Companion**

Rainbow Aura Quartz — a crystal of awakening, joy, and amplified energy. It activates the aura, uplifts the spirit, and helps integrate change with playfulness. Use it in meditation to welcome breakthroughs, carry it to attract inspiration, or place it by your bed to invoke insightful dreams.

## **Affirmation**

"I embrace change as liberation. I trust the unknown and awaken to freedom."

## **The Celestial Method™ Practice: Liberation Breath.**

Stand near an open window or outdoors, holding a piece of rainbow aura quartz in your hand. Breathe deeply as you visualize a teal ray moving through your body, breaking apart stagnant energy like lightning through the sky.

As you exhale, imagine yourself releasing old limitations. Speak the affirmation three times: "I embrace change as liberation. I trust the unknown and awaken to freedom."

Finally, imagine a dolphin leaping before you, reminding you that joy follows every act of courageous awakening.



# NEPTUNE

## THE DREAMWEAVER

### Key Terms:

- ◆ Dreams
- ◆ Spirituality
- ◆ Escape

### Visual Description

A graceful woman dances barefoot atop a stone, her flowing gown dissolving into waves of starlight and mist. Her arms are lifted in surrender and joy, as if she is weaving unseen threads between heaven and earth. Above her floats the planet Neptune, glowing in soft cerulean light, emanating mystery and transcendence.

Around her are floating jellyfish, luminous and ethereal, drifting in from another dimension like spirit-guides of the ocean deep. The waters are enriched with lotus flowers, symbols of awakening and spiritual rebirth, glowing in radiant pinks and purples. Crystalline towers shimmer on either side, catching the light as if

anchoring this dreamscape in reality. The entire scene radiates fluidity, wonder, and enchantment, reminding us that Neptune blurs the line between what is real and what is imagined — between waking life and the dream.

### **Astrological Insight**

Neptune is the planet of dreams, intuition, and spiritual connection. It dissolves boundaries, opening us to divine imagination, compassion, and transcendence. Neptune's energy can inspire visionary art, mystical awareness, and deep trust in the unseen. Yet, its illusions can also cloud judgment, asking us to discern what is fantasy and what is truth.

Neptune personifies the path to step into your intuition, to trust your inner visions, and to explore the realm of dreams, symbols, and imagination. Neptune asks: What dreams are calling you forward? Where might illusion be tempting you away from your truth?

### **Card Message**

The Dreamweaver invites you to surrender to the sacred flow of imagination and intuition. This card signals a time when inspiration, creativity, and mystical awareness are heightened. You may feel called to create art, journal your dreams, or pay attention to synchronicities that feel like whispers from the Divine.

Yet this card also cautions against escapism. The jellyfish drifting through the waters remind you of the beauty in surrender, but also the necessity of awareness — to move with grace, not drift without an anchor. The lotus blossoms affirm that even in murky waters, enlightenment arises.

This card is an invitation to let your intuition guide you like a compass, while remembering to stay grounded in clarity. Trust your visions but anchor them with discernment. Here, Neptune offers not only dreams, but the light to see them through.

### **Color Ray**

Blue — the ray of intuition, spiritual truth, and peace. Visualize sapphire-blue light surrounding your aura, calming your mind, opening your third eye, and attuning you to divine wisdom.

### **Crystal Companion**

Celestite — a stone of angelic connection and clarity. Celestite heightens intuition, softens anxiety, and enhances dream recall. Place it near your bed to encourage divine messages in sleep, meditate with it for clarity, or hold it close when seeking comfort and peace.

### **Affirmation**

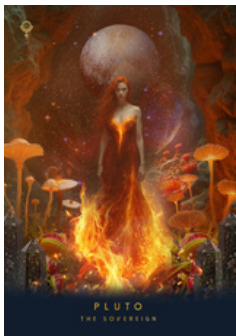
“I surrender to the wisdom of my dreams. Intuition illuminates my path.”

## **The Celestial Method™ Practice: Dream Channeling Ritual.**

Before sleep, place a piece of celestite under your pillow or on your nightstand. Close your eyes and visualize a gentle blue ray enveloping your body, calming your mind like waves.

Whisper the affirmation three times: “I surrender to the wisdom of my dreams. Intuition illuminates my path.”

Imagine yourself walking among lotus flowers, their light guiding you into your dream space. Upon waking, record any symbols, images, or feelings that surface — they are threads woven by The Dreamweaver for your journey.



# PLUTO

## THE SOVEREIGN

### Key Terms:

- ◆ Karmic Release
- ◆ Agency
- ◆ Regeneration

### Visual Description

A woman stands at the mouth of a cavern, her body encircled in fire that rises into the shape of a gown, glowing with unstoppable force. Her long red hair cascades in waves, blending with the flames as if she herself is forged from fire. Above her, Pluto looms in the heavens, stark and shadowed, radiating intensity and mystery.

Around her feet, flames anchor into the earth while clusters of crimson and golden mushrooms sprout from the ground, symbols of regeneration, decay, and the cycle of death and rebirth. Black crystalline towers rise on either side, shimmering with hidden power, anchoring the scene in otherworldly strength. The entire atmosphere

hums with regeneration — the reminder that what is destroyed can always be reborn stronger, and that true sovereignty emerges from the ashes.

### **Astrological Insight**

Pluto is the planet of transformation, rebirth, and power. It rules the unseen forces — death and renewal, shadow and alchemy, endings that birth beginnings. As the planet that rules the underworld, it reveals what is buried, demanding that we face what we fear so we may find our strength. Its energy is uncompromising, intense, and deeply purifying, offering nothing less than radical rebirth.

Astrologically, Pluto grants you the space to step fully into your power, but this requires you to release control tendencies. It asks: What part of me must shift so that I may truly live? Where have I given away my sovereignty, and how can I recover it? Pluto energy may strip away what no longer serves you, but it does so to reveal the indestructible truth at your core.

### **Card Message**

The Sovereign arrives as a call to metamorphosis. It signals a time of endings, release, and a powerful rebirth. You may feel as though the ground is burning beneath you, but these flames are here to liberate, not to destroy. The presence of the mushrooms affirms that regeneration

follows decay — nothing is ever truly lost, only alchemized. The Sovereign is the part of you that rises from the ashes of old stories, reclaimed and radiant. It asks you to embody courage in the face of endings and to recognize that your shadow, once faced, becomes the source of your strength. The Sovereign assures you that by stepping into transformation, you awaken the fullness of your soul's power.

### **Color Ray**

Magenta — the ray of alchemy, empowerment, and soul rebirth. Visualize magenta flames burning away fear, leaving only clarity, truth, and sovereign strength.

### **Crystal Companion**

Numite — the Sorcerer's Stone, one of the oldest minerals on Earth. Numite is a crystal of protection, grounding, and shadow integration. It supports you in facing hidden fears and transmuting them into empowerment. Hold it during times of release, place it near your root chakra for grounding, or carry it as a talisman of sovereignty and protection.

### **Affirmation**

"I rise through transformation. In my sovereignty, I am unshakable."

## **The Celestial Method™ Practice: Fire of Rebirth Ritual.**

Find a quiet space and place a piece of nummite in front of you. Light a candle and close your eyes, visualizing a magenta flame enveloping your entire body. With each breath, imagine the flame burning away old fears, attachments, and false identities.

Whisper the affirmation three times: “I rise through transformation. In my sovereignty, I am unshakable.” When you open your eyes, hold the nummite and feel the solid strength of your soul — unbroken, eternal, and sovereign.



## NORTH NODE THE WAYFINDER

### Key Terms:

- ◆ Uncharted
- ◆ Destiny
- ◆ Becoming

### Visual Description

In a valley of radiant wildflowers, a woman stands cloaked in crimson robes, her gaze steady and unshakable. Behind her coils a majestic blue dragon, its presence protective yet guiding, symbolizing the courage and power required to step into destiny. Above her rises a towering snow-capped mountain, crowned with a glowing compass, its four directions radiating light. The compass glows as if whispering that the path forward is both written in the stars and chosen with free will. Around her, crystalline pillars glimmer in the morning light, rooting the vision in clarity. The scene radiates myth and majesty — a reminder that the North Node does not merely

point to fate, but to the mountain of becoming that we are destined to climb.

## **Astrological Insight**

The North Node represents the soul's path of growth — the future we are asked to embrace. It is not the familiar territory of the South Node, but the path of becoming, where courage, faith, and self-trust are essential. The North Node calls us to leave behind comfort zones and step into the challenges that awaken our highest potential.

When stepping into the North Node promise, you are being asked to trust the compass of your destiny. Like the mountain in the distance, your path may feel daunting, yet every step forward expands your soul. This celestial point in astrology reminds you that courage, wisdom, and guardianship surround you as you walk this path.

## **Card Message**

The Wayfinder is a point of destiny. This card arrives when you are at a turning point — when your life asks you to step into alignment with your soul's purpose. You may feel both exhilarated and intimidated by what lies ahead, but the North Node assures you that what is unfamiliar is also the very terrain of your potential. The dragon symbolizes the guardianship of your path, urging you to be brave enough to face uncertainty and powerful enough to claim your future.

The compass above reminds you that while destiny provides the direction, you must take the steps. Every action you take in alignment with your purpose brings clarity to the next.

The Wayfinder reminds you that the soul does not evolve through repetition of the past, but through the courage to grow. This is your invitation to step forward — toward the mountain, to your destiny, to who you are meant to be.

### **Color Ray**

Diamond Light (all colors combined) — the ray of destiny, alignment, and integration. Visualize a prismatic light surrounding you, weaving together every lesson of the past into a radiant path forward.

### **Crystal Companion**

Sunstone — a stone of vitality, courage, and destiny. Sunstone illuminates your path with clarity and confidence, dispelling fear and empowering you to take bold steps toward your future. Carry it during times of transition, meditate with it to ignite vision, or place it on your altar as a guiding light.

### **Affirmation**

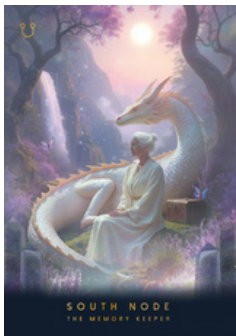
“I trust the compass of my soul. Every step forward aligns me with my destiny.”

## **The Celestial Method™ Practice: Compass of Becoming.**

Hold a sunstone in your palm and close your eyes. Visualize a diamond ray of light forming a compass within your chest, glowing at your heart center.

Whisper the affirmation three times: "I trust the compass of my soul. Every step forward aligns me with my destiny."

Imagine yourself walking toward a great mountain, the dragon at your side, each step illuminating the path ahead. Trust that as you move, the way will reveal itself.



## SOUTH NODE

### THE MEMORY KEEPER

#### **Key Terms:**

- ◆ Karma
- ◆ Past
- ◆ Wisdom

#### **Visual Description**

In a serene valley bathed in soft lilac light, an elder woman sits peacefully, her posture calm and assured. Behind her coils a luminous white dragon, its scales shimmering with iridescence like moonlit pearls, symbolizing the guardianship of memory and ancestral wisdom.

A gentle waterfall cascades in the distance, representing the continuous flow of time — past into present, present into future. At her side rests a small wooden chest, a vessel of hidden treasures and karmic lessons stored within. Butterflies flutter around her, emblems of transformation and the soul's rebirth across lifetimes. Framed by blossoming lavender trees

and crystalline pillars, the entire scene radiates sacred stillness — a reminder that the South Node holds the echoes of where we have been, grounding us as we prepare for where we are going.

### **Astrological Insight**

The South Node represents the past: the patterns, gifts, and memories carried across lifetimes. It reveals both the wisdom we have mastered and the comfort zones we must release to grow. While the South Node can provide security, dwelling there too long prevents us from fulfilling the calling of the North Node.

The South Node is the celestial point that encodes your history without being bound by it. It invites you to integrate the lessons of the past while moving forward with clarity. It whispers: Remember who you are, but do not mistake memory for destiny.

### **Card Message**

The Memory Keeper appears as a guardian of your soul's lineage. This card signals a time when the past may feel present — resurfacing in relationships, habits, or dreams. You are being shown patterns not to keep you trapped, but to remind you of the wisdom you carry. The chest at the woman's side symbolizes the treasures of her past lives, ancestral gifts, and personal

experiences that form the foundation of who she is. The butterflies remind you that memory, like the soul, is constantly transforming — that nothing from your past is wasted. The South Node invites you to cherish what you have learned, while acknowledging that your soul's evolution lies in the delicate balance between remembering and releasing.

The Memory Keeper assures you that you are not starting from nothing. You carry entire libraries within your spirit. Trust that the wisdom you need for your next step already lives inside you.

### **Color Ray**

Diamond Light (all colors combined) — the ray of integration, memory, and ancestral wisdom. Visualize a prism of diamond light weaving through your body, honoring your past while freeing you to move forward.

### **Crystal Companion**

Lazulite — a stone of vision, insight, and soul memory. Lazulite enhances dreamwork, supports karmic release, and connects you to the wisdom of past lives. Use it in meditation to access memory, place it beside your journal for intuitive writing, or carry it when healing ancestral patterns.

## **Affirmation**

“My past is a teacher. I honor its wisdom and release what no longer serves.”

## **The Celestial Method™ Practice: Ancestral Chest Ritual.**

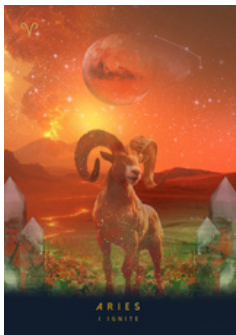
Sit quietly with a piece of lazulite in your hand. Close your eyes and envision a diamond ray forming a chest before you, filled with luminous treasures.

Whisper the affirmation three times: “My past is a teacher. I honor its wisdom and release what no longer serves.”

Imagine unlocking the chest. See ancestral wisdom, memories, and gifts rising like light, flowing into your body. When ready, visualize the chest closing, leaving only what strengthens your soul. Feel the dragon behind you, reminding you that you are protected as you move forward, free yet rooted in wisdom.

ZODIAC SIGN  
CARDS

12 ENERGETIC ARCHETYPES



# ARIES

**Mantra: "I Ignite."**

**Timeline:**

March 20 – April 19

## Visual Description

A powerful ram stands tall upon a fiery plain, its horns spiraling upward with strength and determination. Behind it, the red-orange glow of the planet Mars dominates the sky, emanating heat and urgency. A constellation of Aries glimmers faintly above, etching its eternal signature in the heavens.

In the distance, a volcano erupts, spilling molten lava that flows across the land, raw energy, unrestrained and alive. The atmosphere is charged with action, movement, and fearless momentum. Crystalline pillars anchor the scene, grounding the fire in clarity. The ram's gaze is direct and unwavering, a symbol of Aries' courage

to initiate and lead the charge, no matter the risk.

## **Astrological Insight**

Aries is the first sign of the zodiac, ruled by Mars, the planet of action, courage, and drive. It represents beginnings, independence, and the pioneering spirit. Aries energy is passionate, bold, and often impulsive, teaching us the value of following instinct and moving forward even without guarantees.

In its shadow, Aries must keep their temper or impatience in check, as consistency and unwavering belief will lead them to their desired outcome. When Aries energy appears, it reminds you to honor your courage and take initiative. It is the spark that ignites transformation and the force that pushes you beyond hesitation into action. Aries does not wait for permission; it sets the course by moving first.

## **Card Message**

The Aries card arrives when you are being called to ignite your inner fire and step boldly onto your path. This is a time for initiation — to start, to try, to act. The ram teaches you that momentum builds when you dare to take the first step, even if the road ahead is uncertain. The volcanic eruption in the distance reflects your inner reserves of untapped energy. You may feel restless, inspired, or even impatient — all signals that your spirit is

ready to move.

Aries energy asks you: Where are you hesitating when your soul is urging you forward? What could happen if you trusted your instinct and allowed yourself to ignite? This card does not promise ease, but it does promise power. Aries affirms that when you live from your courage, you create the path for others to follow.

### **Color Ray**

Red — the ray of vitality, action, and primal life force. Visualize red light flowing through your body, fueling courage, sharpening instinct, and propelling you forward with bold clarity.

### **Crystal Companion**

Bloodstone — a stone of strength, courage, and resilience. Bloodstone empowers decisive action, grounds restless energy, and supports endurance. Carry it when starting new ventures, meditate with it to overcome fear, or place it on your desk to spark motivation.

### **Affirmation**

“I ignite my inner fire. My courage fuels my path.”

## **The Celestial Method™ Practice: Fire Spark Ritual.**

Hold a piece of bloodstone in your dominant hand. Close your eyes and visualize a glowing red ray rising from the earth into your body, filling your chest with fire.

Whisper the mantra aloud: “I Ignite.” Breathe deeply, imagining a gentle flame spreading through your auric field. See yourself stepping forward into the next phase of your journey, the ram walking beside you, sure-footed and strong.

Speak the affirmation three times: “I ignite my inner fire. My courage fuels my path.” When you open your eyes, commit to one action today that reflects this energy.



# TAURUS

**Mantra: "I Embody."**

**Timeline:**

April 20 – May 20

## Visual Description

In a golden field of wildflowers, a majestic bull stands firm, its body illuminated with a constellation-like shimmer that reveals its celestial essence. Its horns curve upward with quiet power, symbols of stability and endurance. Above, the planet Venus glows softly in pastel tones, casting warmth across rolling hills, while the Taurus constellation twinkles nearby, anchoring the archetype in the night sky.

The meadow blooms with a tapestry of daisies, poppies, and wildflowers, reminding us of Taurus' connection to beauty, fertility, and earthly abundance. At the edges of the scene, crystalline

towers of deep green rise like guardians, rooting the vision into the fertile ground. The atmosphere is serene yet powerful, a reminder of Taurus' gift of embodiment, patience, and devotion to the simple yet sacred pleasures of life.

### **Astrological Insight**

Taurus is the second sign of the zodiac, ruled by Venus — the planet of beauty, love, and harmony. Its energy is sensual, grounded, and deeply connected to the physical world. Taurus teaches us the art of patience, stability, and the value of cultivating beauty in daily life. It is the energy of embodiment — rooting spirit into form, so that we may savor and enjoy the richness of existence.

Through its shadow aspect, this sign can be stubborn and overly indulgent if they become too invested in earthly pleasures without a connection to the spirit realms. Taurus energy in astrology calls you to slow down, ground yourself, and return to what is lasting. Taurus reminds you that devotion builds security and that your body and senses are sacred gateways to presence and joy.

### **Card Message**

The Taurus card arrives to remind you to embody your essence fully. This is not a time to rush, but to deepen — to root yourself in what feels steady, nourishing, and true. Just as the bull

moves slowly yet with unwavering certainty, you are being asked to align with patience and persistence. The meadow of flowers reflects the beauty available when you pause to notice life's details. The glowing Venus above reminds you that love, pleasure, and harmony are not indulgences but vital aspects of a soul-centered life.

This card asks: Where can you cultivate more presence in your daily rhythms? How can you honor your body as the temple of your soul? Taurus energy reassures you that by anchoring into your values and caring for your body and environment, you create fertile ground for lasting growth.

### **Color Ray**

Green — the ray of balance, embodiment, and healing. Visualize green light wrapping your body in serenity, restoring equilibrium, strengthening your heart, and rooting you deeply into the earth.

### **Crystal Companion**

Moss Agate — a stone of grounding, growth, and abundance. Moss Agate strengthens your connection to nature, harmonizes your body's rhythms, and supports new beginnings with stability. Carry it during times of change, place it in your home for harmony, or hold it in meditation to anchor your energy into calm presence.

## **Affirmation**

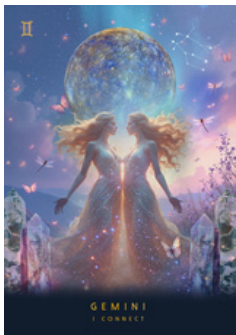
“I embody my truth. Through patience and presence, I create lasting beauty.”

## **The Celestial Method™ Practice: Embodiment Grounding Ritual.**

Find a quiet space in nature or near plants. Hold a piece of moss agate in your hand and close your eyes. Visualize a green ray flowing from the earth into your body, filling your chest and grounding your feet like roots into soil.

Whisper the mantra aloud: “I Embody.” As you breathe, imagine the flowers around you blooming with each inhale, and your body growing stronger with each exhale.

Speak the affirmation three times: “I embody my truth. Through patience and presence, I create lasting beauty.” When you finish, place the crystal on the earth or your altar to anchor the energy.



## GEMINI

**Mantra: "I Connect."**

**Timeline:**

May 21 – June 20

### Visual Description

Two mirrored figures stand face to face, their gowns shimmering with starlight as if woven from the constellations themselves. Their flowing golden hair moves like a shared current of energy, symbolizing Gemini's duality and ever-shifting nature. Behind them, the planet Mercury glows in radiant hues, its surface alive with movement, while the Gemini constellation hangs above, anchoring their celestial identity.

Around them flutter butterflies and dragonflies, delicate messengers of transformation, curiosity, and communication. The crystalline towers that flank the scene ground this airy sign in spiritual truth. The atmosphere is alive with motion and

brightness — a reminder that connection and adaptability are essential in weaving many perspectives into light.

### **Astrological Insight**

Gemini is the third sign of the zodiac, ruled by Mercury, the planet of thought, language, and exchange. This sign embodies curiosity, flexibility, and duality, reminding us that truth is often found in dialogue rather than solitude. Gemini energy thrives on learning, speaking, and connecting ideas, people, and worlds together.

When Gemini energy appears, it invites you to stay open, flexible, and curious. In its shadow expression, Gemini can become scattered and ungrounded with their messages. Gemini reminds you that communication is not only about talking, but also about listening — and that every connection has the potential to transform you. This is a time to speak your truth, ask questions, and be open to the dualities in your life.

### **Card Message**

The Gemini card arrives when you are being invited into dialogue — with yourself, with others, or with Spirit. This is a time of curiosity, expansion, and openness. The mirrored figures represent the many facets of your identity and the harmony that comes from accepting your inner duality. The butterflies and dragonflies remind you that communication is a form of transformation —

words shape reality, ideas ignite change, and conversations create bridges. Gemini energy asks: Where do you need to open dialogue in your life? How can you allow curiosity to lead you forward without needing certainty? This card encourages you to speak with honesty, explore with wonder, and remember that connection is the key to growth.

### **Color Ray**

Yellow — the ray of clarity, intellect, and curiosity. Visualize yellow light filling your mind like sunlight, opening pathways of understanding, communication, and illumination.

### **Crystal Companion**

Charoite — a crystal of transformation and insight. Charoite encourages flexibility, helps release fears of the unknown, and enhances your ability to integrate many perspectives into clarity. Work with it when navigating change, journaling new ideas, or deepening conversations that matter.

### **Affirmation**

“I connect with curiosity, clarity, and truth. My voice and my listening are bridges of light.”

## **The Celestial Method™ Practice: Mirror Dialogue Ritual.**

Sit with a charoite crystal nearby. Place a small mirror before you and gaze into your reflection. Breathe deeply, imagining a yellow ray shining into your mind like sunlight, clearing away clutter and doubt.

Speak the mantra aloud: "I Connect." Then, ask yourself one question aloud, something weighing on your heart. Listen in silence for the answer, whether it arises as words, sensations, or emotions.

Speak the affirmation three times: "I connect with curiosity, clarity, and truth. My voice and my listening are bridges of light." Trust that dialogue with yourself is also dialogue with Spirit.



# CANCER

**Mantra: "I Reflect."**

**Timeline:**

June 21 – July 22

## Visual Description

A luminous crab emerges from the shimmering waters under the light of the Full Moon, its body glowing with iridescent hues that mirror the tides. The Cancer constellation glimmers faintly above, echoing the soul's memory of home and belonging.

On either side, crystalline towers of Labradorite anchor the watery scene with their flashes of silver and blue light, protective guardians of emotional truth. Below, two open oyster shells cradle radiant pearls, symbols of wisdom born from life's tender vulnerabilities. The waters sparkle like liquid starlight, blurring the line between sea, sky, emotion, and spirit. The

atmosphere is gentle yet powerful, reflecting Cancer's gift of feeling, protection, and deep sensitivity.

### **Astrological Insight**

Cancer is the fourth sign of the zodiac, ruled by the Moon — the celestial body of cycles, memory, and feeling. As a cardinal water sign, Cancer initiates through emotion, intuition, and care. It is the energy of protection, belonging, and the sacred home within and around us. When Cancer energy appears, it calls you inward — to reflect, to nurture, and to honor your emotional truth.

In shadow, Cancer can overly safeguard what they hold dear or close off to receiving support. Like the crab that carries its shell wherever it roams, Cancer reminds us that true security is found within. This sign is deeply tied to ancestry, memory, and the invisible threads of soul-family connection.

### **Card Message**

The Cancer card arises as an invitation to return to your inner waters. This is not a time to push outward, but to reflect, soften, and allow your feelings to be honored. The Moon above illuminates your inner tides, asking you to trust the wisdom of your emotions. The pearls in the oysters symbolize resilience: beauty that forms when tenderness is protected and transformed.

The shimmering waters remind you that your

intuition is your guiding compass, even when clarity feels distant. Cancer asks: Where do you need to create greater safety for yourself? What truth is waiting in your reflection? This card encourages you to nurture yourself as you would a beloved. Your emotional world is sacred—by tending it, you create a foundation of love and compassion that radiates outward.

### **Color Ray**

Silver — the ray of intuition, reflection, and protection. Visualize silver light flowing through your aura like moonlight, softening sharp edges, enhancing intuition, and creating a protective shield of clarity and peace.

### **Crystal Companion**

Labradorite — a mystical stone of intuition and energetic protection. Labradorite strengthens your psychic senses, shields your aura, and awakens hidden wisdom. Work with it when seeking clarity in emotional matters, during dreamwork, or when creating sacred energetic boundaries.

### **Affirmation**

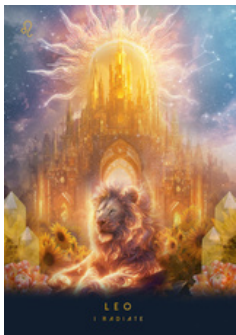
“I reflect with honesty and compassion. My emotions are sacred messengers of truth.”

## **The Celestial Method™ Practice: Moonlit Reflection Ritual.**

Sit in a quiet space, holding a piece of labradorite or placing it before you. If possible, perform this ritual under the moonlight. Close your eyes and visualize a silver ray showering your body like a protective cocoon.

Place your hand over your heart and whisper the mantra aloud: “I Reflect.” Allow any emotions to rise without judgment — breathe into them as though they are waves, flowing in and out.

If a memory or feeling surfaces, see it as a pearl forming in the depths of your heart. Speak the affirmation three times: “I reflect with honesty and compassion. My emotions are sacred messengers of truth.” End by thanking your inner waters for guiding you.



# LEO

**Mantra: "I Radiate."**

**Timeline:**

July 23 – August 22

## Visual Description

A majestic lion rests regally before a radiant golden citadel, its mane glowing with fiery currents of starlight. Behind the lion rises a vast castle of light, crowned with a solar halo that floods the sky with brilliance, symbolizing Leo's sovereignty and luminous presence. Above, the Leo constellation sparkles, etching its eternal mark in the heavens.

Around the lion bloom fields of sunflowers, forever turning toward the Sun, and delicate carnations, their layered petals glowing with warmth and vitality. The crystalline towers of citrine ground the scene, radiating golden clarity and amplifying the themes of courage, creativity,

and abundance. The entire landscape is bathed in solar fire, embodying Leo's essence of majesty, joy, and golden radiance.

### **Astrological Insight**

Leo is the fifth sign of the zodiac, ruled by the Sun — the great star that gives life to all. As a fixed fire sign, Leo is associated with loyalty, consistency, and the power to shine steadily even in uncertain times. It embodies sovereignty, self-expression, and the sacred responsibility of authentically embodying your light. When Leo energy is tapped into, it reminds you that your joy is your power.

In its shadow, it leans to become overzealous or boastful. True leadership is not about control but inspiration, born from the courage to stand in your truth. Leo energy helps you seek out creativity, radiance, and visibility — to live as the authority of your own kingdom of light.

### **Card Message**

The Leo card shines as a reminder that it is your birthright to radiate. The lion, guardian of courage and dignity, represents the inner ruler who knows its worth. The golden citadel behind it symbolizes the palace of self-trust and the soul's eternal fire. The sunflowers remind you to orient yourself toward joy and vitality, while the carnations — symbols of admiration and devotion echo Leo's

call to live with heart-centered pride. This card asks: Where in life are you being invited to step into visibility? Where have you dimmed your light to please others?

This card encourages you to reclaim your radiance unapologetically. Your light is not meant to be hidden, but meant to inspire, guide, and uplift others. To embody Leo is to shine boldly, not in pride, but in authenticity, serving as a beacon of courage and joy.

### **Color Ray**

Orange — the ray of vitality, creativity, and confidence. Visualize orange light streaming through your heart and solar plexus, igniting your inner fire, clearing fear, and amplifying your joy.

### **Crystal Companion**

Citrine — the crystal of abundance, radiance, and creative power. Citrine clears away self-doubt, powers up inspiration, and attracts prosperity. Carry it to increase confidence, meditate with it to attract new ideas, or place it on your altar to strengthen your light.

### **Affirmation**

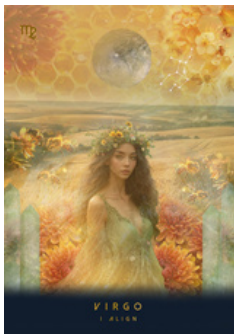
“I radiate joy, courage, and truth. My light shines authentically and inspires others.”

## **The Celestial Method™ Practice: Solar Radiance Ritual.**

Hold a piece of citrine in your hands or place it over your heart. Close your eyes and imagine a brilliant orange ray of solar light descending from above, filling your chest with warmth and radiance. Whisper the mantra aloud: “I Radiate.”

Breathe deeply, seeing yourself as the lion — calm, courageous, and majestic. Visualize sunflowers opening all around you, turning toward your light, reflecting the truth that when you shine, others are uplifted too.

Repeat the affirmation three times: “I radiate joy, courage, and truth. My light shines authentically and inspires others.” Carry this solar fire forward as a reminder that your joy is a gift to the world.



## VIRGO

**Mantra: "I Align."**

**Timeline:**

August 23 –  
September 22

### Visual Description

A serene maiden stands amidst golden fields of grain, the harvest stretching endlessly behind her, symbolizing Virgo's devotion to service and cultivation. She wears a crown of wildflowers and sunflowers, blending seamlessly with nature's order and beauty. Around her, bees buzz with sacred purpose, echoing Virgo's archetype of diligence, devotion, and harmony with natural rhythms.

Behind her, Mercury, Virgo's ruling planet, shines with silvery light against a golden honeycomb sky, weaving cosmic intelligence into earthly order. The Virgo constellation is etched into the heavens, illuminating the zodiac signs

eternal presence. Surrounding her are glowing crystal towers of aventurine, emanating grounded optimism and healing energy. The entire scene embodies Virgo's sacred art of alignment—bridging spirit and matter, body and soul.

### **Astrological Insight**

Virgo is the sixth sign of the zodiac, ruled by Mercury, the planet of perception, communication, and synthesis. As a mutable earth sign, Virgo adapts, refines, and integrates. It represents the sacred bridge between chaos and order, spirit and body, vision and reality. Virgo energy calls forth discernment, devotion, and a desire to improve and align, not for perfectionism's sake, but to create coherence between the inner and outer worlds.

Virgo in shadow can lead to being overly critical, but at its core lies an opportunity to tap into compassion. It sees where things are misaligned because it longs to heal, to mend, and to restore balance. This energy encourages mindfulness in the small things — the ritual of tending, the honoring of cycles, the integration of sacred details that create harmony in the whole.

### **Card Message**

The Virgo card arrives when you are being called to refine and realign. The maiden is a mirror of your own inner healer – the one who knows that

integrity is not found in grand gestures but in daily devotion. The bees remind you that your efforts, though small, ripple outward into collective transformation. Virgo does not demand flawlessness but presence. This card asks: What in your life is ready to be purified, organized, or healed? Where are you being invited to slow down and return to sacred rhythms?

Virgo energy guides you back to your body, your rituals, and your breath. It shows that self-care is a form of service, and alignment is the path to wholeness.

### **Color Ray**

Yellow — the ray of clarity, intellect, and discernment. Visualize yellow light illuminating your mind, clearing cluttered thoughts, and filling you with focus and purposeful energy.

### **Crystal Companion**

Aventurine — the stone of renewal, growth, and wellbeing. Aventurine soothes the nervous system, harmonizes energy, and invites optimism. Work with it to release self-criticism, amplify healing, and align your heart with service.

## **Affirmation**

“I align my body, mind, and spirit with clarity and grace.”

## **The Celestial Method™ Practice: Alignment Breath.**

Hold aventurine in your palm. Close your eyes and breathe deeply, visualizing a golden-yellow light flowing from your crown down through your body. With each exhale, release tension; with each inhale, draw in clarity.

Whisper the mantra aloud: “I Align.” Imagine bees circling gently around you, weaving harmony in your aura.

As you breathe, feel your energy centering, steadying, and aligning with your highest integrity. Repeat the affirmation three times: “I align my body, mind, and spirit with clarity and grace.” Carry this sense of integration into your day as an anchor of Virgo’s healing devotion.



# LIBRA

**Mantra:**  
**“I Harmonize.”**

**Timeline:**  
September 23 –  
October 22

## Visual Description

Under a pastel sky washed in soft pink and lavender hues, a golden scale floats in perfect balance — Libra’s eternal symbol of fairness and harmony. Above, Venus, Libra’s ruling planet, glows warmly, while the Libra constellation twinkles nearby, echoing divine equilibrium. Around the scale, swans and a dove soar gracefully, embodying purity, peace, and soulful union.

The towers of pink tourmaline crystals stand tall, anchoring the scene with heart-centered healing. At the base, purple irises bloom, their elegant petals open to the heavens, representing wisdom, faith, and the sacred beauty of balance.

The entire vision emanates serenity, reminding us of the harmony possible when self and other, heart and mind, live in alignment.

### **Astrological Insight**

Libra, the seventh sign of the zodiac, is an air sign ruled by Venus, the planet of love, beauty, and magnetism. It governs relationships, justice, artistry, and the pursuit of peace. Libra energy seeks balance both internally and externally, offering a mirror of how to align our personal truth with the collective good.

This archetype asks us to cultivate fairness without sacrificing authenticity. It is the sign of the diplomat, the artist, and the peacemaker — yet its shadow may lean into indecision or people-pleasing. These challenges reveal where self-trust must be strengthened so that choices flow from clarity, not fear.

### **Card Message**

When Libra appears, it is a call to realign with grace. Where in your life do you need harmony? Are you compromising too much, or holding too tightly to being right?

True balance comes from flow — the dance of give and receive, assertion and openness, self and other. The swans remind you of a sacred partnership, where love thrives in mutual reflection. The dove whispers of inner peace that

radiates outward. The irises ground wisdom with faith: that when you walk in balance life naturally restores its harmony around you. This card invites you to ask: What can I harmonize today — within myself, and within my relationships?

### **Color Ray**

Pink — the ray of compassion, love, and beauty. Envision soft pink light filling your aura, smoothing tension, dissolving discord, and calling in harmony to every interaction.

### **Crystal Companion**

Pink Tourmaline — a heart-centered stone of balance and emotional healing. It opens pathways of compassion and strengthens bonds of love, helping to restore trust in both yourself and others.

### **Affirmation**

“I harmonize my relationships, my choices, and my energy with love and grace.”

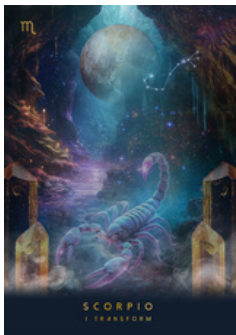
### **The Celestial Method™ Practice: Heart Balance Ritual.**

Hold a pink tourmaline crystal in your hand or against your heart. Close your eyes and breathe deeply, visualizing a gentle wave of pink light expanding through your entire being. With each

inhale, call balance into your body; with each exhale, release conflict and disharmony. See golden scales within your chest settling into perfect alignment.

Whisper three times: "I Harmonize." Then repeat the affirmation aloud: "I harmonize my relationships, my choices, and my energy with love and grace."

Carry this balanced energy with you into your day, letting your presence ripple peace and harmony wherever you go.



# SCORPIO

**Mantra:**  
“I Transform.”

**Timeline:**  
October 23 –  
November 21

## Visual Description

In a mystical cavern glowing with violet and indigo light, a powerful scorpion emerges from the shadows, its tail poised with both danger and promise. The rocky cave opens into a pool of shimmering water, reflecting the mysteries of the unseen. Above, Pluto glows in the cosmic sky, casting transformative energy in the scene, while the Scorpio constellation burns brightly beside it, illuminating the archetype of rebirth. Veils of mist curl along the ground, a reminder of what is hidden yet waiting to be revealed. The glowing towers of smoky citrine crystals rise on either side, embodying both grounding and alchemical fire. The entire image speaks of transformation,

power, and the sacred ability to descend into darkness and return with light.

### **Astrological Insight**

Scorpio, the eighth sign of the zodiac, is a water sign co-ruled by Mars and Pluto. It governs transformation, sexuality, power, and regeneration. Scorpio teaches us that death is never the end — it is a portal into rebirth. Its essence is intensity and depth, demanding truth at all costs.

Scorpio energy is magnetic and fearless, drawing us into the hidden corners of our psyche. It rules shadow work, intimacy, and the alchemical process of healing. Its shadow can appear as obsession, jealousy, or control, yet even these are invitations to reclaim power and rise stronger. At its highest, Scorpio is the phoenix rising — embodying courage, resilience, and transformation.

### **Card Message**

The Scorpio card arrives when you are being asked to step into change and face your shadow with honesty. Transformation is not always comfortable, but it is always liberating. The scorpion reminds you that true power lies in your ability to transmute control into surrender. This card asks:

What part of you is ready to be released so that something new can be born? Are you willing to

walk into the cavern of your soul and emerge radiant with truth? Scorpio calls you to reclaim your inner alchemist. The mist clears when you stop running from your depths and instead honor them as the wellspring of your strength.

### **Color Ray**

Violet — the ray of transmutation, spiritual depth, and higher wisdom. Visualize violet light surrounding you, dissolving fear and transforming heavy energy into empowerment.

### **Crystal Companion**

Smoky Citrine — a rare crystal that fuses grounding with manifestation. It clears stagnant energy, anchors transformation, and infuses your rebirth with clarity and courage. Work with it when navigating changes or releasing old cycles.

### **Affirmation**

“I transform with courage, grace, and power. I rise renewed.”

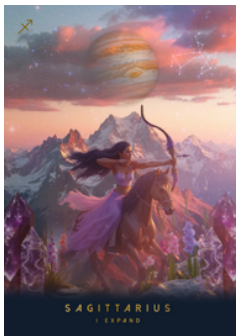
### **The Celestial Method™ Practice: Shadow Alchemy.**

Sit in meditation with a smoky citrine crystal. Close your eyes and imagine descending into a glowing violet cavern, lit by pools of reflective water. With each breath, allow one fear, pattern, or outdated identity to rise to the surface.

Whisper aloud: "I release you."

Visualize violet light surrounding the fear, transmuting it into gold. Hold the smoky citrine in your hand and feel its grounding presence rooting your transformation into the earth.

Speak the mantra: "I Transform." Then repeat the affirmation three times: "I transform with courage, grace, and power. I rise renewed."



# SAGITTARIUS

**Mantra: "I Expand."**

**Timeline:**

November 22 –  
December 21

## Visual Description

A fearless archer rides a galloping horse, bow drawn toward the horizon of endless possibility. Her hair streams in the wind, embodying Sagittarius' wild freedom and momentum. Behind her, snow-capped mountains rise beneath a coral and lavender sky, reflecting the heights this sign dares to climb. Above, the great planet Jupiter glows with abundance, flanked by the Sagittarius constellation guiding her course.

Glowing towers of crystals shimmer with violet and silver flecks, grounding the restless pursuit with calm. Blossoms at her feet soften the energy, reminding us that truth-seeking is both bold and beautiful.

## **Astrological Insight**

Sagittarius, the ninth sign of the zodiac, is a fire sign ruled by Jupiter, the planet of wisdom and expansion. It governs travel, philosophy, spirituality, and the search for meaning. This archetype pushes boundaries, daring us to step beyond what is known to discover the world — and ourselves — anew. At its best, Sagittarius offers optimism, courage, and a contagious hunger for life.

In its shadow, it may overreach, scatter energy, or avoid commitments. Yet through both, Sagittarius teaches that truth and freedom arrive when we follow the arrows of curiosity, faith, and purpose.

### **Card Message**

The Sagittarius card arrives when it's time to widen your horizon. This may appear as travel, learning, or opening your mind to new spiritual truths. The archer reminds you: where you aim, energy follows. Choose your focus wisely. Ask yourself: Where am I being called to step beyond my comfort zone? What vision lights my path?

Expansion does not always require distance — sometimes it means releasing limitation within the mind and daring to see stronger possibilities. Sagittarius calls you to trust the adventure unfolding and live with joy.

## **Color Ray**

Amber — the ray of vitality, courage, and enthusiasm. Envision amber light filling your aura, dissolving stagnancy while grounding spiritual wisdom into action.

## **Crystal Companion**

Lepidolite — a calming crystal that tempers restlessness with peace. It supports Sagittarius' fiery courage while easing hesitance, making it a perfect ally for travel, study, or moments of bold change.

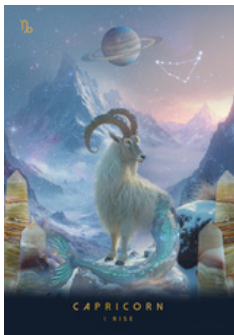
## **Affirmation**

"I expand with faith, courage, and joy — embracing the infinite possibilities before me."

## **The Celestial Method™ Practice: Arrow of Intention.**

Hold a lepidolite crystal in your hand. Stretch your arms as though drawing back a bow. With eyes closed, place your intention into the arrow — a dream, a truth, or a new adventure. Exhale, release the bowstring, and watch the arrow fly forward into the cosmos. Whisper three times: "I Expand."

Then repeat aloud: "I expand with faith, courage, and joy — embracing the infinite possibilities before me."



# CAPRICORN

**Mantra: “I Rise.”**

**Timeline:**

December 22 –  
January 19

## Visual Description

A majestic sea-goat stands at the snowy edge of a mountain pass, its body both grounded and mystical — half sturdy mountain goat, half shimmering tail of turquoise scales. The creature gazes with quiet determination, embodying Capricorn’s balance of ambition and spiritual depth. Behind it, the towering peaks stretch toward the heavens, glowing under a crystalline sky.

Saturn hovers above with rings of discipline and time, alongside the Capricorn constellation etched in starlight. Anchoring the scene, four luminous yellow crystals rise from the snow, radiating endurance and encouragement. The landscape glows in hues of indigo and ice,

reminding us that Capricorn energy is forged through perseverance, patience, and the climb toward greatness.

### **Astrological Insight**

Capricorn, the tenth sign of the zodiac, is an earth sign ruled by Saturn, the planet of structure, responsibility, and mastery. Capricorn teaches us that success comes not from shortcuts but from persistence, integrity, and a willingness to endure the climb. As seen in the fish tail, Capricorn's highest expression embodies spiritual wisdom, authority, and quiet strength — an architect of long-term vision.

In shadow, it may feel burdened by responsibility or fear failure, becoming rigid or overly cautious. Yet even in its heaviness, this energy presents perseverance and unwavering strength to push through obstacles. The actual achievement lies in rising again and again.

### **Card Message**

The Capricorn card invites you to claim your resilience and remember that your soul was designed to rise. Like the mountain goat scaling impossible cliffs, you are being called to trust your inner strength and take steady steps toward your highest vision. This is your moment to step into complete alignment, integrity, and focus. If you feel tempted to take the easy way, this may lead to more delays and obstacles. Every small effort

builds momentum. The lessons learned become a part of your foundation. You may feel tested, but these trials are sacred initiations that will lead you to your ideal course.

Ask yourself: What mountain is calling me to climb? What part of my soul is asking to be fortified through discipline and devotion? Capricorn reminds you that endurance is holy, and with patience, your dreams will crystallize into form.

### **Color Ray**

Indigo — the ray of wisdom, structure, and truth. Imagine indigo light wrapping around you like a cloak of protection, sharpening your focus while soothing self-doubt.

### **Crystal Companion**

Yellow Calcite — a crystal of motivation and optimism, it fuels Capricorn's persistence with lightness and confidence. Work with it when you feel weary on your journey, allowing its energy to lift your spirit and remind you that the climb is worth it.

### **Affirmation**

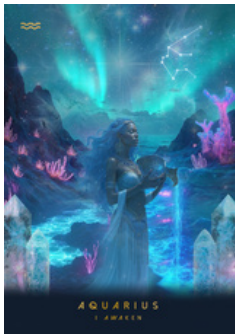
"I rise with integrity, patience, and strength — building a life aligned with my soul's purpose."

## **The Celestial Method™ Practice: The Mountain Climb.**

Hold your yellow calcite crystal and close your eyes. Picture yourself at the base of a mountain. With each inhale, feel strength surge through your body; with each exhale, imagine releasing fear or heaviness.

Take three deep breaths, then envision yourself ascending the mountain step by step until you reach the summit. At the peak, raise your arms and whisper three times: "I Rise."

Seal the practice with the affirmation: "I rise with integrity, patience, and strength — building a life aligned with my soul's purpose."



# AQUARIUS

**Mantra: "I Awaken."**

**Timeline:**

January 20 –  
February 18

## Visual Description

Beneath an electric sky alive with aurora borealis, a radiant water bearer pours an endless stream into the glowing shore. Behind her, Uranus, planet of awakening and revolution, hovers among the stars beside the Aquarius constellation, casting a teal glow that illuminates the landscape.

Coral-like formations in radiant pink and violet emerge from the waters, suggesting otherworldly ecosystems and the promise of new creation. Four crystalline towers rise at the edges, symbolizing clarity in chaos and the grounding of visionary insight. This image captures Aquarius as the bridge between heaven and earth.

## **Astrological Insight**

Aquarius, the eleventh sign of the zodiac, is an air sign ruled by Uranus and Saturn. It governs innovation, collective progress, rebellion, and the pursuit of higher truth. Aquarius energy looks ahead, asking which systems need to be dismantled and what fresh ideas can serve humanity. At its highest expression, Aquarius embodies wisdom, independence, and originality.

In its shadow, this sign may detach too firmly, becoming aloof, unpredictable, or resistant to closeness in relationships. Yet, through both, Aquarius teaches us that awakening can be uncomfortable, but by trusting innovation or non-conformity, you can tap into brilliance and opportunity. A new life can be built with stronger foundations as you break free from old patterns. Aquarius is the storehouse of hopes and endeavors that require you to step out of your comfort zone. Believe.

## **Card Message**

The Aquarius card arrives as a call to awaken your higher vision. You are invited to step out of limiting narratives and embrace your role as a trailblazer. Where are you being asked to bring change, to live differently, or to offer your unique perspective?

Aquarius reminds you that progress begins with courageous ideas, and that when you embody

your truth, you give others permission to awaken theirs. Ask yourself: What am I here to innovate? What patterns of thought, behavior, or belief are ready to shift so I may align with my soul's freedom? Aquarius energy may disrupt, but it always clears space for something better to emerge. Trust the awakening.

### **Color Ray**

Teal — the ray of liberation, awakening, and renewal. Visualize teal light streaming through your body, dissolving conformity and igniting inner freedom.

### **Crystal Companion**

Snowflake Obsidian — a stone of clarity, balance, and integration. It grounds Aquarius' visionary spark while helping release outdated patterns. Meditate with it to find calm within disruption and to anchor insights into tangible action.

### **Affirmation**

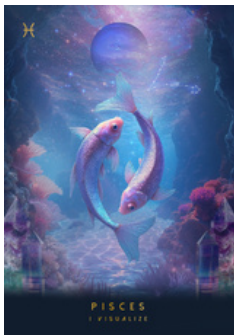
"I awaken to my truth and embody the freedom to create a new future."

### **The Celestial Method™ Practice: Stream of Awakening.**

Hold your snowflake obsidian crystal and close your eyes. Imagine standing beneath a sky filled

with teal auroras. See yourself holding a vessel of water, pouring it into the sea.

With each breath, imagine outdated patterns flowing away into the current. Whisper three times: "I Awaken." Then, repeat the affirmation aloud: "I awaken to my truth and embody the freedom to create a new future."



## PISCES

**Mantra: “I Visualize.”**

**Timeline:**

February 19 –  
March 20

### Visual Description

In an ethereal underwater realm, two iridescent fish swim in a circle, their bodies shimmering with cosmic light as they spiral around one another in perfect balance. Above them, the planet Neptune glows softly in hues of violet and blue, its energy infusing the ocean depths with otherworldly radiance.

The Pisces constellation twinkles faintly beside it, reminding us of destiny's thread. Coral reefs in shades of magenta bloom across the scene, alive with mystery, while crystalline towers rise from the seafloor, grounding the dreamlike waters. This card radiates the boundless compassion, intuition, and imagination of Pisces, guiding us to surrender and envision our soul's truth.

## **Astrological Insight**

Pisces, the twelfth sign of the zodiac, is a water sign co-ruled by Neptune and Jupiter. It represents empathy, dreams, spirituality, and transcendence. The Piscean current dissolves boundaries, inviting us to feel the unity of all life. This sign, in its light expression, embodies compassion, artistry, intuition, and divine love.

Its shadow aspect can lead to illusions, avoidance, or escapism. Yet the gift of Pisces is its power to transform vulnerability into vision, weaving imagination into healing. Pisces remind us that the dream world and waking life are intimately connected, and that true peace comes from recognizing the Divine within our souls. As we learn to root ourselves in the present while honoring our spiritual nature, we become channels for healing and inspiration, helping to create a more compassionate world.

## **Card Message**

The Pisces card comes to awaken your imaginative vision. It invites you to surrender to the subtle, the mystical, and the unseen, and to trust the guidance that arrives in dreams, symbols, and intuition. Pisces asks you to lean into your sensitivity rather than resisting it. Your empathy is a strength that allows you to connect with the divine currents of love. This is a moment to dream boldly, to visualize the life you long to create, and

to believe in its possibility. Ask yourself: What visions are stirring in your inner ocean? What does your heart see that your eyes cannot yet? Trust that your imagination is the compass of your soul.

### **Color Ray**

Blue — the ray of intuition, surrender, and divine flow. Visualize waves of blue light enveloping your aura, dissolving fear and softening resistance, allowing you to float in the waters of trust.

### **Crystal Companion**

Fluorite — a stone of clarity, intuition, and energetic cleansing. This crystal helps anchor Pisces' dreamlike currents into focus, turning visions into practical steps. Meditate with it to receive clearer spiritual downloads and to align your mind with your intuitive knowing.

### **Affirmation**

"I visualize my highest path and flow with the divine currents of love and trust."

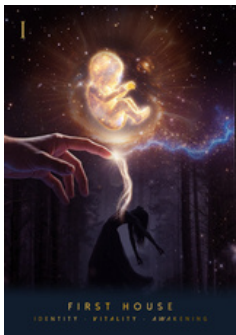
### **The Celestial Method™ Practice: Ocean of Vision.**

Hold your fluorite crystal and close your eyes. Imagine yourself floating peacefully in a vast ocean of starlight. See two glowing fish circling around you, weaving a spiral of divine protection.

Whisper three times: "I Visualize." Then, speak your affirmation aloud: "I visualize my highest path and flow with the divine currents of love and trust." Let the vision stay with you, knowing it is already forming in unseen realms.

# THE TWELVE HOUSES

THE ART OF EMBODYING YOUR LIFE  
THROUGH YOUR SOUL-CENTERED SELF



## 1<sup>ST</sup> HOUSE BIRTH BY LIGHT

### Key Terms:

- ◆ Identity
- ◆ Vitality
- ◆ Awakening

### Visual Description

An ethereal infant glows suspended in the skies, tethered to the cosmic womb, symbolizing your eternal essence before incarnation. A divine hand reaches down, channeling life force and purpose into form. Below, a woman leans back in surrender, her aura spilling upward in luminous threads that connect her earthly being to her higher origins. The starry forest backdrop reminds us that even in the shadows, your soul carries its own light into the world.

### Card Message

The 1st House represents birth, identity, and becoming. It is the place where the soul chooses

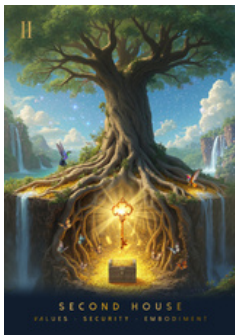
its form and begins its earthly journey. This card invites you to step fully into your soul-aligned identity — to accept who you truly are, rather than who you've been conditioned to be. When the 1st House appears, you're being called to consciously rebirth yourself, shedding old narratives and stepping into your infinite potential.

This card can also indicate that it is time to reflect on how you are showing up for others, and whether you have been living authentically. You are a soul living a human experience, and by recognizing this, you will adapt better to challenges that are beyond your control. As you lean into seeing the world like an open path planned by your vision or choices, you will soon realize that you are more powerful than you know.

Remember, there is always a second chance to become more aligned, more radiant, and more you. Every breath is an invitation to craft a reality that reflects your soul's essence.

## **The Celestial Method™ — Embodiment Practice**

Stand before a mirror and place your hand gently over your heart. Look into your own eyes and speak three “I am” affirmations aloud (for example: *I am radiant. I am worthy. I am becoming.*). As you say each phrase, imagine your aura glowing brighter, expanding outward in light threads. Allow yourself to feel the truth of this essence reflected back to you, affirming your emergence into soul aligned identity.



## 2<sup>ND</sup> HOUSE

### ROOTS OF WORTH

#### Key Terms:

- ◆ Values
- ◆ Security
- ◆ Embodiment

#### Visual Description

A majestic tree stretches upward into the heavens, symbolizing stability and growth. At its roots lies a glowing golden key, hovering above a treasure chest overflowing with gold coins—the hidden rewards of living in alignment with your values. Delicate butterflies flutter around, representing transformation and the evolution of your relationship with self-worth. Two hummingbirds safeguard the golden light above, mirroring how nourishing your inner worth sustains your outer reality. Waterfalls cascade on both sides, signifying the eternal flow of energy and abundance.

## **Card Message**

The 2nd House speaks to your inner and outer wealth—your values, resources, and sense of worth. It reminds you that abundance flows when you honor what you truly value, not what the world tells you to chase. This card invites you to root yourself deeply in self-trust, allowing prosperity to grow from the inside out. What you believe you are worthy of becomes the key to unlocking your treasures.

This house also represents the structures of your life and the tools you have to make your dreams a reality. Observe what you do every day that aligns with your vocation or life goals, and ask whether it is sustainable enough to cultivate both joy and success.

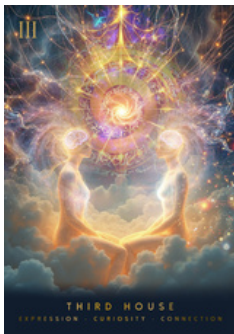
This card may also suggest that you've been too deeply entrenched in the material aspects of life—or that it's time to take a chance on an investment opportunity. You have been working so hard lately, and perhaps you haven't been taking the time to savor what you have created. Zoom out and observe all that you've built on your journey, taking a moment to be proud of yourself—no matter the stage you're in.

## **The Celestial Method™ — Embodiment Practice**

Sit comfortably with both feet planted on the ground. Close your eyes and visualize roots extending from your body deep into the earth, drawing up golden light. With each inhale,

visualize this light filling your chest with warmth and worthiness.

Speak aloud: "I am rooted in my worth. My values guide my abundance." Place your hands over your solar plexus and feel the energy expand, anchoring your connection between inner value and outer prosperity.



## 3<sup>RD</sup> HOUSE

### THE VOICE OF THE SOUL

#### **Key Terms:**

- ◆ Expression
- ◆ Curiosity
- ◆ Connection

### **Visual Description**

Two luminous beings sit across from one another, their bodies glowing with light as streams of energy flow between them. Their illuminated brains symbolize expanded perception and shared understanding, while above them, a cosmic wheel radiates with ancient glyphs and starlight, representing the universal language that transcends words. They sit nestled within clouds, suggesting that communication isn't limited to the physical realm—it bridges the intuitive and the divine. Sparks of light ripple outward, reflecting the ripple effect of every thought and word.

## **Card Message**

The 3rd House is the realm of communication, curiosity, and connection. It reflects how you exchange ideas, express your truth, and create bridges of understanding with others. This card invites you to explore the power of your words and the frequency they carry. Conversations can open portals, expand awareness, and connect souls when they are rooted in authenticity.

If you've been feeling disconnected or uninspired, this card signals it's time to initiate meaningful dialogue or share what's been on your mind. The simplicity of one word can lead to a channel of brilliance as you become curious and open-minded with those who differ from you.

The 3rd House also asks you to slow your thinking if you've been feeling "wired" or scattered. You may be entering a period of heightened mental activity and intuitive downloads—so be discerning about what you take in. Allow your thoughts to settle and clarify, choosing what truly supports your creative vision and spiritual growth.

## **The Celestial Method™ — Embodiment Practice**

Set a timer for five minutes and free-write without stopping. Allow your words to flow without judgment, letting your inner voice reveal itself. When the time is complete circle one phrase or sentence that feels most alive, and speak it aloud.

Notice how the words feel in your body, anchoring the truth that communication is both vibration and creation.



## 4<sup>TH</sup> HOUSE HOME WITHIN

### Key Terms:

- ◆ Roots
- ◆ Nurture
- ◆ Belonging

### Visual Description

A woman kneels before a small fire, tending to its embers with reverence. Behind her, an ancestral tree stretches into the cosmos, its branches intertwined with the stars. Emerging from the smoke, the faces of ancestors appear, watching over her — guardians of her path and keepers of unspoken wisdom.

The stone cottage beside her evokes safety and grounding, while the cosmos beyond hints at the eternal thread between past, present, and future. This image reflects the merging of earthly roots and celestial memory.

## **Card Message**

The 4th House represents your foundation, ancestry, and emotional sanctuary. It is the realm of home, family, and inner belonging—the sacred ground where your roots anchor and your soul remembers its origin. This card reminds you to go inward, to nurture your emotional landscape, to honor your lineage, and to reclaim the parts of yourself shaped by family stories, both spoken and unspoken.

It may also signal a time to heal generational wounds or uncover long-hidden ancestral truths. If you've felt disconnected from your family or inner self, this is your invitation to restore that connection—through communication, reflection, or even by calling upon the wisdom of your ancestors in spirit.

As you continue your journey, remember that you are part of a greater whole. Honor where you come from as you establish your own roots and traditions. Healing your foundation ripples forward through time, creating a sanctuary of belonging within you—the place from which all love and growth flow.

## **The Celestial Method™ — Embodiment Practice**

Create a small “ancestral altar” in your home — place a photo, heirloom, or symbolic object that represents your roots. Light a candle and sit

quietly, imagining your breath connecting you to generations past.

Whisper aloud: "I honor where I came from. I create a sanctuary within." Allow the warmth of the flame to remind you that you are both the keeper of memory and the creator of new foundations.



## 5<sup>TH</sup> HOUSE

### HEART OF CREATION

#### **Key Terms:**

- ◆ Passion
- ◆ Play
- ◆ Radiance

#### **Visual Description**

A woman stands before a canvas, her brush dancing with starlight as she paints a radiant spiral—the divine pulse of creation itself. Swirls of gold and violet energy surround her, weaving constellations and sacred sigils into the air like whispers from the cosmos.

Within the glowing portal behind her, three sacred visions appear: a child releasing a blue butterfly into the light—symbolizing innocence, play, and the freedom of the inner child; a mother tenderly holding her child—embodying unconditional love and the birth of creation; and two lovers in an embrace—honoring passion, romance, and the union of souls. Fully Immersed

in rich hues, the entire scene shimmers like a moment between worlds, where divine inspiration, love, and creative expression converge in harmony.

### **Card Message**

The 5th House is where your inner radiance comes alive—the domain of creativity, passion, romance, children, and play. This card invites you to awaken your inner artist, discover what lights you up, and let your heart lead the way. Something within you is ready to be cultivated, and it begins with visualizing your intentions integrated with your happiness. This is the storehouse of manifestation.

The 5th House reminds you that creation takes many forms—whether you are birthing a project, nurturing a relationship, or guiding a child. Each expression of love mirrors your divine ability to bring something meaningful into existence. Here, life becomes a canvas, and you are the one holding the brush.

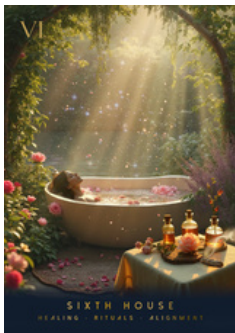
This card also calls you to reflect on your confidence and on how much you nurture your creativity. It's time to step forward, believe in yourself, and begin to trust your ability to bring your dreams to reality.

### **The Celestial Method™ — Embodiment Practice**

Choose one playful, creative act that delights you — paint, sing, dance, or doodle — and give

yourself permission to do it without judgment.

As you move, speak aloud: "I create from joy. My soul shines through my expression." Allow yourself to lose track of time, entering a flow where joy itself becomes your guide.



## 6<sup>TH</sup> HOUSE

### RITUAL OF RENEWAL

#### **Key Terms:**

- ◆ Healing
- ◆ Rituals
- ◆ Alignment

#### **Visual Description**

Bathed in warm rays of sunlight, a woman reclines in a rose-petal bath nestled within a lush garden sanctuary. Beside her, a small altar of botanical oils, a sage smudge stick, and blossoms glows softly, carrying the energy of purification and tenderness. Rays of light drift through the air, as though the universe itself breathes blessings into the scene. This imagery captures the essence of the merging of earthly care and spiritual renewal through embodied ritual.

#### **Card Message**

The 6th House is where sacred devotion meets

daily life. It governs your routines, rituals, well-being, and the way you nurture both body and spirit. If you've been multitasking too much or feeling overwhelmed by work, this card invites you to slow down and listen to your inner rhythms—tending to yourself with reverence. Recognize the conscientious being that you are in your work, but know it's time to set personal boundaries and honor your body's limits.

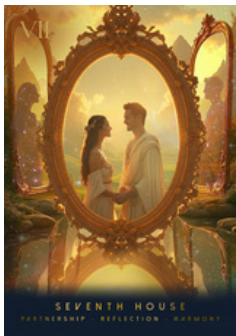
It is vital to include self-care; without it, stagnation or burnout can occur. Your body is the container of your soul, and with continued devotion, you will thrive. This card also encourages you to pause and observe how you're honoring your body through healing rituals or wellness practices.

It may be time to modify your eating habits, adjust your schedule, or begin a new nourishing routine. Healing is not found in grand gestures, but in the small, intentional acts that return you to wholeness—the morning tea ritual, the cleansing bath, a walk in nature, or the moment you pause to breathe. Here, service begins within, reminding you that caring for yourself is the foundation of caring for the world.

## **The Celestial Method™ — Embodiment Practice**

Choose one ritual of care today — a mindful meal, a cleansing bath, a self-healing smudge, or simply pausing for five deep breaths. As you move through it, whisper, “Every act of care is sacred.

I tend to my body, my spirit, and my path with devotion." Let the simplicity of the act become a blessing that nourishes your entire being.



## 7<sup>TH</sup> HOUSE

### THE LIGHT OF LOVE

#### **Key Terms:**

- ◆ Partnership
- ◆ Reflection
- ◆ Harmony

#### **Visual Description**

Bathed in golden light, two souls stand face-to-face, their hands gently entwined. Behind them, ornate mirrors frame their reflections — symbols of the inner landscapes that shape every connection. The luminous glow surrounding them speaks of divine union, where the outer partnership mirrors the inner harmony we seek. This imagery reminds us that relationships are both portals and teachers, revealing where our hearts are ready to heal, trust, and open wider.

#### **Card Message**

The 7th House is the realm of mirrors—where your relationships reflect the unspoken truths

within you. It governs partnerships, commitments, and the dance between self and other. When this card appears, it asks you to look closely at what your connections are revealing: are they expanding your heart, or asking you to set it free?

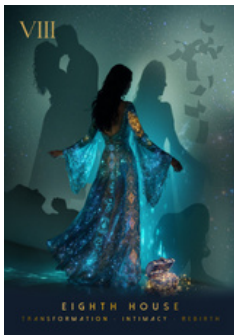
The 7th House reveals how you attract relationships and what they mirror about your soul's evolution. Every connection on your path holds the key to your development. This card can signify a relationship that stirs deep growth and promise—it may be uplifting and revelatory, such as a soulmate bond, or challenging and intense, like a karmic connection. No matter who crosses your path, they are meant to evolve you. Through conscious awareness, you can decide the next chapter of your love story.

This card may also indicate readiness to deepen commitment—discussing marriage, partnership, or the next step in your relationship journey. The 7th House teaches that every bond is a teacher, whether through love, challenge, or the quiet lessons of presence. You are invited to honor your relationships as sacred contracts, knowing that the way you love another reflects how deeply you love yourself.

## **The Celestial Method™ — Embodiment Practice**

Sit across from someone you trust, and take one minute to gaze gently into their eyes without speaking. If you are alone, sit before a mirror and do the same with yourself. As you breathe,

say silently: “Every reflection teaches me how to love more deeply.” Feel the energy of union — whether with another or within yourself — and notice the truths it reveals.



## 8<sup>TH</sup> HOUSE

### THE ALCHEMY OF THE SOUL

#### **Key Terms:**

- ◆ Transformation
- ◆ Intimacy
- ◆ Rebirth

#### **Visual Description**

A woman in a starlit gown steps forward, draped in celestial patterns, as shadows behind her reveal her inner world — passion, grief, fear, and release. A treasure chest at her feet spills radiant light, symbolizing the hidden gifts unearthed when we bravely enter our depths. The cosmic glow surrounding her evokes the soul's initiation into higher wisdom: transformation is never destruction, but an awakening into greater wholeness.

#### **Card Message**

The 8th House is the realm of profound rebirth —where endings become beginnings and

shadows transmute into illumination. It speaks to intimacy, transformation, power, and surrender. When this card appears, you are invited to witness the underworld of the self—a sacred space where outdated identities dissolve, and the soul ascends renewed.

The 8th House beckons you to look more deeply into how you cultivate your inner landscape. Your energy is precious, and the way you perceive life is often shaped by the memories and emotions you hold within. This card signals a time to gently clear residual patterns or energetic imprints that have lingered—even those rooted in past intimate relationships or the merging of resources.

This house governs the unseen bonds we share—emotional, energetic, and karmic. It asks you to face your fears around loss, trust, and vulnerability to reclaim your true power. As you meet your shadow self with compassion and acceptance, you unearth hidden treasures within yourself, allowing yourself to live from a deeper place of peace and wholeness. Through this sacred passage, you are invited to release control and open to the mysteries of death and rebirth, intimacy and surrender—the portals to spiritual metamorphosis.

## **The Celestial Method™ — Embodiment Practice**

Light a candle in a darkened space. With each inhale, imagine drawing your shadows into the

flame; with each exhale, see them dissolve into light. Speak aloud: "I release what no longer serves. I rise renewed."

When you are ready, close your eyes and place your hand over your heart, feeling the warmth of transformation within you.



## 9<sup>TH</sup> HOUSE

### THE JOURNEY OF HIGHER KNOWING

#### **Key Terms:**

- ◆ Soul Lessons
- ◆ Knowledge
- ◆ Refinement

#### **Visual Description**

Bathed in the golden glow of sacred knowledge, a cloaked figure stands among towering pillars etched with ancient symbols. Scrolls float midair, illuminated by cosmic light, while constellations spiral through an open portal behind her. A compass hovers nearby, symbolizing the soul's inner guidance, while keys unlock pathways into higher realms. This imagery reminds you that the answers you seek are already within you, and that you are both student and teacher on this path.

#### **Card Message**

The 9th House is the gateway to wisdom,

exploration, and divine truth. After moving through the depths of transformation, this card calls you to seek beyond the known. It speaks of journeys both outward and inward—the pursuit of knowledge, spiritual awakening, and the bold expansion of your horizons.

This card reminds you that you hold more wisdom than you realize, and you are ready to share your insights with the world. It may also indicate that something you've been working on is ready to be refined and shaped into a masterpiece for others to treasure. If you've been feeling uninspired or uncertain, the 9th House encourages you to rediscover your soul's mastery by stepping beyond your comfort zone—perhaps through study, travel, or learning from people of diverse paths and perspectives.

This is the house of philosophy, faith, and vision. It invites you to follow your curiosity into uncharted territory and trust where your spirit feels called. Whether through exploration, education, or spiritual practice, you are being guided to expand your lens and discover the golden threads that weave together the wisdom of all things.

## **The Celestial Method™ — Embodiment Practice**

Step outside beneath the open sky. Stretch your arms wide and imagine golden light pouring into your body from the stars above. Ask yourself

“What truth is guiding me now?” Notice the first word, image, or feeling that arises. Write it down, and let it serve as your compass for the path ahead.



## 10<sup>TH</sup> HOUSE WHEN DESTINY CALLS

### Key Terms:

- ◆ Purpose
- ◆ Visibility
- ◆ Mastery

### Visual Description

Within a grand starlit temple, a circle of six robed figures gathers in quiet reverence, seated upon a luminous sigil etched into the floor. At the center, a high priestess stands tall, holding a radiant scroll of light as she gazes upward at a brilliant cosmic star descending. Its crystalline beams cascade into the temple, illuminating the space with divine purpose.

The priestess represents the soul aligned with destiny, while the six surrounding figures symbolize ancestral guides, mentors, and karmic allies who support the journey. High archways carved from ancient stone frame the scene,

creating a threshold between the earthly plane and higher realms. Subtle stardust flows around the circle, whispering of divine timing and soul contracts fulfilled.

### **Card Message**

The 10th House represents your highest calling—the mountain you are destined to climb, where your soul's purpose intersects with the world's recognition of your gifts. While this house is known for public achievements, its deeper lesson lies in truth, fulfillment, and the sacred contract between your soul and the Universe. What are you here to embody, and how will your light shape the collective story?

This card arrives when you are ready to align with your dharma — the sacred contract between your soul and the Universe. Success is found in how you authentically express your truth in the world.

The 10th House also represents your public self and career. If you've been feeling unmotivated or unsupported in your ventures, this card signals that your soul is ready to be placed where you're meant to be. All you have to do is listen to your inner voice and allow it to guide you toward fulfillment. This card also reminds you of the importance of understanding authority — both your own and others. You are ready to learn how to embody leadership from a place of service and integrity. You are being initiated into a new level of becoming through the lens of your true self.

## **The Celestial Method™ — Embodiment Practice**

Write your “legacy headline” as though it were printed in tomorrow’s newspaper — one sentence that captures the essence of the impact you wish to leave. Read it aloud, then place your hand over your heart and say: “I rise in devotion to my soul’s calling.” Keep this headline somewhere visible to remind you daily of the summit you are climbing.



## 11<sup>TH</sup> HOUSE

### THE CONSTELLATION OF BELONGING

#### **Key Terms:**

- ◆ Community
- ◆ Innovation
- ◆ Vision

#### **Visual Description**

Four women walk side by side through a golden meadow. Behind them is an illuminated celestial archway, symbolizing divine opportunities arising from collective energy. Each woman embodies a different elemental essence, represented by the triangular pendant at her heart:

Earth — grounded wisdom, stability, and calm  
*(maroon robe)*

Fire — passion, vitality, and creative drive  
*(white robe with sunflowers)*

Water — intuition, empathy, and flow  
*(seafoam green gown)*

Air — vision, intellect, and new possibilities  
*(pastel pink robe)*

Though each carries a distinct gift, they walk in harmony, symbolizing a union of differences and the expansion that comes when diversity is accepted. Around them, stardust cascades under an infinite sky, suggesting that these bonds are cosmically orchestrated.

### **Card Message**

The 11th House illuminates the path of soul-aligned community and the power of collective dreams. This card invites you to open your heart to collaboration and connection.

To move toward your aspirations, begin by building networks and communities that support your growth. If you feel cut off from meaningful connections, it is time for you to observe whether you are showing up honestly. Diverse perspectives within your circles can offer greater value than constant agreement.

The 11th House also reminds you of the importance of helping others—when you unconditionally support those around you, the Universe then responds with abundance and momentum, aligning you with your dreams. Belonging means honoring your unique essence while celebrating the diversity around you. The Universe is guiding you into spaces where others praise your individuality. You are being woven into a constellation of kindred souls whose visions support yours. Together, you co-create something greater than the sum of its parts—a living expression of collective belonging.

## **The Celestial Method™ — Embodiment Practice**

Gather with a friend, group, or community — or if alone, create a circle of candles to represent shared energy. Speak aloud one dream or vision you hold for the future. Then, invite others (or imagine your circle of kindred souls) adding their dreams beside yours, forming a constellation of light. Close with the affirmation: “Together, our visions expand and uplift the whole.”



## 12<sup>TH</sup> HOUSE VEIL OF GRACE

### Key Terms:

- ◆ Release
- ◆ Spirit
- ◆ Dreams

### Visual Description

A serene woman sits in meditative surrender atop a celestial bed of clouds, draped in flowing lavender — the color of spiritual awakening and the higher realms. Her third eye glows brightly, a beacon of inner sight and expanded consciousness.

Beside her rests a crystal harp, representing the music of the cosmos and the subtle harmonies of the soul. On the other side, crystal singing bowls shimmer with luminous tones, symbolizing vibrational healing and the clearing of karmic residue. Above her, the dreamlike sky blends starlight and dawn, reflecting the boundless

nature of this house — a reminder that we are both the dreamer and the dream.

### **Card Message**

The 12th House is where the veil thins and the boundaries between the self and the infinite begin to dissolve. This is the domain of mysticism, divine connection, dreams, and soul healing. When this card appears, you are being invited to surrender—to release control, quiet the noise of the outer world, and return to the sanctuary of your inner light. This card invites you to look within and deepen your connection with your Soul-Centered Self—the guiding light that heals and restores your life.

The 12th House reveals how your soul is meant to evolve in this lifetime while freeing you from the confines of past karma. As a free-willed soul, you are not meant to repeat old patterns, and this message is here to tell you that you are ready to cut the cords and begin anew. There is always a choice, and your soul is meant to live a life filled with peace and serenity.

This house also rules the realm of dreams and divine messages, where your soul speaks its truest language. Pay attention to the symbols and sensations that appear in dreams or in moments of stillness—they are the whispers of your higher self guiding you toward integration and renewal.

You may also be moving through a phase of transcendence where hidden patterns, old

wounds, or subconscious imprints surface for release. Rather than resisting, allow them to rise and dissolve through compassion. In stillness, you will rediscover your soul's eternal essence and remember your oneness with the divine symphony of life.

### **The Celestial Method™ — Embodiment Practice**

Lie down in stillness and place your hands gently over your heart and third eye. Close your eyes and imagine yourself floating on clouds, bathed in violet and silver light. Whisper: "I surrender to the infinite. I am whole. I am free."

Allow any images, feelings, or memories to rise like passing clouds. Let them dissolve naturally, leaving only peace and spaciousness within.

# ASPECTS

THE INTEGRATIVE FORCES IN THE  
BIRTH CHART



# CONJUNCTION

## SYNERGY

### Key Terms:

- ◆ Fusion
- ◆ Amplification
- ◆ Integration

### Visual Description

A celestial fusion of light bursts at the center of the cosmos, where two swirling vortices of stardust converge into a singular luminous point. Waves of ethereal pinks and cool blues spiral outward, symbolizing the merging of polarities and the creation of something greater than the sum of its parts. The surrounding stars remain still, emphasizing the magnetism and gravitational pull of this cosmic alignment.

### Card Message

When two planets form a conjunction, their

energies merge into a singular, intensified frequency. This aspect amplifies everything it touches—strengths, challenges, desires, and lessons. A conjunction between compatible planets (e.g., *Venus* and *Moon*) can bring favorable outcomes, while one involving disharmonious planets (e.g., *Saturn* and *Mars*) may create friction, leading to lessons in endurance and power.

By selecting this card, you are invited to explore where two parts of yourself—or two areas of your life—are blending into one. Integration is key to making the most of this aspect. You may feel heightened emotions, stronger desires, or new inspiration as something reaches its peak. Where are you being called to integrate two powerful energies in your life? Whether this feels harmonious or overwhelming will depend on your conscious mindset.

### **The Celestial Method™ — Embodiment Practice**

Hold two crystals in separate hands — they may represent different energies or intentions. Bring them slowly together at your heart center until they touch, breathing deeply as their energies merge.

Speak aloud: “I welcome integration. I honor both light and shadow as part of my wholeness.” Allow yourself to feel into the new energy that emerges, noticing how union creates strength.



# OPPOSITION DUALITY

## Key Terms:

- ◆ Duality
- ◆ Reflection
- ◆ Balance

## Visual Description

The planets, Mercury and Neptune, face each other, suspended in a cosmic ballet — one bathed in golden light, radiating clarity and confidence, while the other glows in deep indigo, reflecting mystery and intuition. A swirling nebula bridges their energies, representing the dynamic tension between opposing forces. The image suggests that while these planets appear separate, they are connected through an invisible current of cosmic balance.

## Card Message

An opposition occurs when two planets sit directly across from each other in the sky, pulling

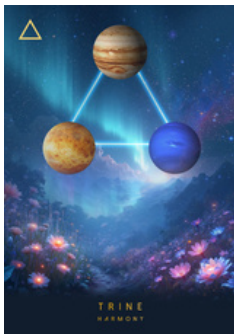
you between polar energies that seek balance. This aspect illuminates where life is asking you to see yourself through another lens — through relationships, circumstances, or inner contrasts.

Oppositions can feel like tension, but beneath the surface, they are portals for integration. They invite you to explore the extremes within yourself and to discover the middle path where wholeness is reclaimed. When you lean into one side too heavily, the other becomes louder, reminding you that both are essential to your growth.

This is a card of mirroring. Where in your life are you projecting, resisting, or seeking validation from the opposite? Healing arrives when you soften into your unity and honor the dance of contrast.

## **The Celestial Method™ — Embodiment Practice**

Stand with your arms stretched wide, palms open — one hand facing golden light, the other indigo shadow. Take three slow breaths, imagining each side pulling in opposite directions. Then bring your hands together at your heart, whispering: “I honor both sides of myself. Through contrast, I return to balance.” Feel the merging of duality into wholeness within your chest.



# TRINE

## HARMONY

### Key Terms:

- ◆ Trinity
- ◆ Flow
- ◆ Ease

### Visual Description

Three radiant planets form a perfect triangle of light against a backdrop of shimmering auroras and glowing wildflowers. The illuminated triangle symbolizes divine symmetry and the seamless flow of universal energy. The blooming meadow below reflects the fertile ground trines create — spaces where inspiration grows naturally when we choose to nurture it.

### Card Message

A trine forms when two planets are  $120^\circ$  apart, creating a channel where energy moves freely and effortlessly. Unlike the tension of oppositions

or squares, a trine feels like cosmic alignment — the universe whispering, “This way, love. Let it be easy.” This is a card of natural gifts and soul resonance.

Trines often highlight talents, opportunities, and areas where you’re deeply supported by your chart. Yet, this flow invites responsibility: when energy moves so seamlessly, it can be tempting to take your gifts for granted. The invitation is to activate what’s already within you and use your innate strengths as tools for growth.

Here, harmony is not passive — it’s a choice. When you consciously work with the ease of a trine, you amplify your potential and open doors to profound creativity, love, and spiritual expansion.

## **The Celestial Method™ — Embodiment Practice**

Sit in a quiet space and, using your hands, trace a triangle in the air. Visualize each point glowing with radiant light. As you breathe, imagine energy moving effortlessly between the three points, creating flow within your body and spirit.

Whisper: “I choose ease. I honor my natural gifts.” Place your palms over your heart, sealing the energy of harmony into your being.



# SQUARE

## CATALYST

### Key Terms:

- ◆ Growth
- ◆ Tension
- ◆ Breakthrough

### Visual Description

Two planets stand at odds, separated by a charged square of light set against a swirling cosmic vortex. Sparks of energy dance along the edges, symbolizing creative tension and the forces pulling you toward your next evolution. The spiral at the center reminds you that beneath every challenge lies a hidden portal to growth.

### Card Message

A square aspect is formed when two planets are 90° apart, invoking a moment of tension that demands action. This energy arrives as a wake-up call, pushing against your comfort zones and

creating friction that becomes fuel for transformation. Squares act as soul catalysts, revealing where old patterns, beliefs, or attachments no longer serve your highest path. While challenging, they hold the power to ignite breakthroughs when you're willing to lean into discomfort.

This card asks you to observe the unease within yourself and learn how to balance will with surrender. Where can you turn tension into growth? It's here to sharpen your edges, making you stronger, braver, and more aligned with your true self.

### **The Celestial Method™ — Embodiment Practice**

Press your palms firmly together, feeling the resistance. Take three deep breaths, noticing the tension building between your hands. Then slowly soften your grip, allowing your hands to open wide and release.

Whisper: "Through challenge, I awaken. Through tension, I grow." This practice reminds you that friction is not your enemy — it is the catalyst of transformation.



# SEXTILE

## OPPORTUNITY

### Key Terms:

- ◆ Potential
- ◆ Coordinate
- ◆ Support

### Visual Description

Two planets are bridged by a spiraling current of starlight, symbolizing the gentle, magnetic pull of opportunity. Saturn's rings shimmer with wisdom and structure, while Mars radiates raw drive and courage. Together, they reveal the balance between discipline and action, vision and momentum. Above them, ethereal auroras dance — a reminder that cosmic magic weaves through every choice you make.

### Card Message

A sextile forms when two planets are 60° apart, opening a channel of opportunity and support.

Unlike the effortless flow of a trine, a sextile asks you to participate in the magic. It whispers: “The doors are open, but you must choose to walk through.”

This aspect brings moments where your skills, desires, and timing naturally align — but it still requires you to take inspired action. Sextiles are cosmic invitations to co-create with the universe, blending your free will with divine orchestration.

If a sextile appears for you now, pay attention to the subtle nudges: the unexpected conversation, the synchronistic meeting, the intuitive pull. These connections can spark creative solutions, soulful partnerships, or fresh pathways forward. Trust your instincts and follow where the energy flows.

## **The Celestial Method™ — Embodiment Practice**

Sit with a crystal in each hand — one to represent discipline and one for drive. Close your eyes and visualize a spiral of light connecting the two, spinning gently between your palms.

With each inhale, feel opportunity flowing toward you; with each exhale, whisper: “I say yes.” When ready, place the crystals together at your heart to seal the alignment between vision and action.



# QUINCUNX

## ADJUSTMENT

### **Key Terms:**

- ◆ Adjustment
- ◆ Disorientation
- ◆ Realignment

### **Visual Description**

A glowing black hole bends space and light, symbolizing the gravity of change. Around its edge, streams of stardust spiral inward, embodying the pull toward deep transformation. The darkness isn't an ending but a portal, where old energies collapse to make way for rebirth. This image mirrors the essence of the quincunx: profound tension, release, and renewal.

### **Card Message**

A quincunx forms when two planets are  $150^\circ$  apart, creating an energetic dissonance that demands integration and adjustment. Unlike the harmony of a trine or the ease of a sextile, a

quincunx can feel unsettling — as though two parts of your life are speaking entirely different languages. This aspect asks you to bridge opposing truths. Something in your outer reality may not yet align with your soul's inner frequency. Rather than forcing clarity, allow this tension to reveal what wants to shift. A quincunx is less about control and more about surrendering to transformation.

When this card appears, you're standing at the threshold of a soul recalibration. You're being asked to release outdated patterns, beliefs, or identities so that your path can realign with your deeper purpose. Trust that the discomfort is temporary — a necessary void that will give way to new wisdom.

### **The Celestial Method™ — Embodiment Practice**

Stand with your arms extended outward, palms facing in opposite directions, as if holding two separate truths. Close your eyes and breathe into the tension between them. On each inhale, draw light into both hands; on each exhale, imagine that light weaving together across your chest.

Whisper: "I soften into alignment. What feels separate now will find harmony in time." When you're ready, bring your palms together at your heart to symbolize integration.



FIRE SUIT



## MARS IN ARIES ASSERTION

### Key Terms:

- ◆ Initiative
- ◆ Strength
- ◆ Leadership

### Timeline:

March 21–30

### Visual Description

A lone wolf stands at the mouth of a stone hearth where flames roar brightly, casting sparks into the twilight sky. Behind it, the sun sets over rugged mountain peaks, painting the horizon with fire and shadow. Above, Mars glows fiercely in the Aries constellation, amplifying the spirit of raw drive and primal instinct. The wolf's steady gaze reflects determination and readiness — a reminder that assertion is not just force but presence. The two swirling flames beside the wolf signify directed power, a flame that, when contained with purpose, fuels creation and strength.

### **Card Message**

Mars in Aries represents the power and the courage needed to get things moving. The action planet in its dignity sign grants drive and complete devotion to your vision. This placement instills initiative, raw instincts, and trust to make things happen through your conscious will.

When this card arrives, it invites you to stand firm in your truth and to be more assertive. Assertion is the conscious act of claiming your place in the world. Know that your voice matters, your energy is potent, and your steps forward shape the path ahead. You are being asked to meet life head-on with the strength of one who knows the fire they carry.

### **Color Rays**

Red and Golden Orange — a perfect blend to invite drive and passion with your vision.

### **Crystal Companions**

Carnelian + Magnetite — invites courage and creativity while preserving groundedness and inner strength.

### **Affirmation**

“I claim my power with clarity and strength. My actions align with the fire of my truth.”

## **The Celestial Method™ — Embodiment Practice**

Hold carnelian in your right hand and place magnetite near your feet. Stand with your legs slightly apart, as though rooted into the earth. Inhale deeply, drawing energy up from your base into your solar plexus.

As you exhale, step one foot firmly forward and extend your hand outward as if declaring your presence to the universe.

Repeat aloud: “I am here. I am strong. I am ready.” Feel the fire rise within you, steady and unstoppable.



# SUN IN ARIES

## VITALITY

### Key Terms:

- ◆ Radiance
- ◆ Renewal
- ◆ Inner Flame

### Timeline:

March 31 – April 20

### Visual Description

A luminous woman, draped in golden robes, stands on a rocky mountain path at dawn, her chest glowing with a radiant light around her heart. With one hand over her heart and the other lifted toward the heavens, she draws down a brilliant sphere of golden fire. Starlight cascades around her, merging sky and earth as she becomes a living channel of light. The Aries constellation glimmers faintly in the sky above, and below, three spirit clouds shine, reminding us that our true vitality begins when we dare to believe in our connectedness to life. The scene embodies awakening, courage, and the infinite energy of the life force flowing through the soul.

### **Card Message**

The Sun in Aries represents the spark of life, the courage to begin, and the radiant expression that fuels creation. This energy instills boldness and vitality and helps reclaim the parts of you that long to be expressed—with authenticity and fire. Aries energy does not wait for permission or filter; it leaps, it lives, and it burns bright.

This card is a reminder that your inner flame is for you alone and for your soul's promise. Vitality flows when you align with passion, when your actions are guided by heart rather than fear. Here you are being asked to embody renewal, shed what dims you, and stand in the fullness of your light.

### **Color Rays**

Golden Yellow + Fiery Red — ignites trust in your inner self while powering up strength and vitality.

### **Crystal Companions**

Sunstone + Red Jasper — soothes intensity and infuses you with joy, faith, and grounded courage.

### **Affirmation**

“My inner flame burns bright, renewing me with strength, joy, and radiant vitality.”

## **The Celestial Method™ — Embodiment Practice**

Hold sunstone in your right hand and red jasper in your left. Stand tall with feet firmly planted on the earth.

As you inhale, place your right hand over your heart and visualize a golden sun glowing within your chest. On the exhale, lift your left hand upward, imagining this light expanding into the sky.

Repeat three times: “I am vitality. I am radiant. I am alive.” Let your whole body feel the warmth of renewal, carrying this fire into your day.



## VENUS IN ARIES ATTRACTION

### Key Terms:

- ◆ Passion
- ◆ Impulse
- ◆ Pressure

### Timeline:

April 11–19

### Visual Description

At the edge of a fiery canyon at sunset, a man and woman lean toward one another, their hearts glowing as streams of radiant pink light arc across the divide. Four flames flicker at their feet, symbolizing desire that burns hot and fast, while the canyon reflects the daring leap attraction sometimes requires. Above, Venus glows against the Aries constellation, casting light into the sky like a beacon of bold connection. The atmosphere pulses with urgency and raw magnetism, capturing love's fearless yet aching expression.

### **Card Message**

Venus in Aries awakens attraction in its most primal and courageous form – the kind that ignites quickly, compelling you to act on your desires. This placement carries the fire of chasing, passion, and bold beginnings. Love here is impulsive, daring, and alive with possibility. When selecting this card, it inspires you to honor your desires and the connections that make your heart race.

At the same time, it nudges you to observe whether passion in your relationship is feeding your growth or if it's the thrill of the chase. True connection can be passionate, but the question is, how far can you go with replenishing the flame once it's lit? If you feel that love is out of reach or too fast, take it slow, and observe all that you have built to ground yourself and steady the pace.

### **Color Rays**

Green + Red — uniting a heart-centered connection with bold passion.

### **Crystal Companions**

Rose Quartz + Garnet — inviting a love with tenderness while also honoring individuality and devotedness to self.

### **Affirmation**

“I honor the fire of attraction within me, knowing it leads me toward love that is bold, true, and alive.”

### **The Celestial Method™ — Embodiment Practice**

Hold rose quartz in one hand and garnet in the other. Stand tall, feet rooted to the ground, and breathe deeply into your chest. With each exhale, imagine red and green flames radiating from your heart, bridging any distance between you and what you desire.

Recite, “I honor the fire of attraction within me, knowing it leads me toward love that is bold, true, and alive,” letting your body feel both the courage of Aries and the softness of Venus, united in authentic attraction.



# SATURN IN LEO

## DISCIPLINE

### Key Terms:

- ◆ Focus
- ◆ Mastery
- ◆ Maturity

### Timeline:

July 23 – August 1

### Visual Description

A majestic tiger steps forward from a golden, glowing cage, its gaze steady and unyielding. The cage radiates light as Saturn glows in the night sky, its rings a reminder of structure and responsibility. The Leo constellation crowns the sky above, symbolizing courage and personal authority. Five fiery orbs blaze at the base, representing trials, lessons, and initiations that forge inner strength.

### Card Message

Saturn in Leo represents the mastery of the heart—the art of maturing your creative fire and learning to direct it with integrity. While Leo's child-like expression may feel restricted under

Saturn's weight of responsibility, integrating these energies, is key to succeeding in what truly matters to your heart.

This card suggests seeing structure as a supportive ally rather than a limitation. Boundaries, rituals, and accountability will help strengthen your light, allowing it to shine steadily through life's trials. Saturn in Leo teaches that your brilliance shines brightest when anchored in humility, acceptance, and purpose.

### **Color Rays**

Indigo + Gold — merging responsibility with regal self-expression.

### **Crystal Companion**

Tiger's Eye — grounding courage, strengthening willpower, and aligning personal power with divine purpose.

### **Affirmation**

"I channel my inner fire with wisdom and strength. Discipline is the sacred path that reveals my true radiance."

### **The Celestial Method™ — Embodiment Practice**

Hold a tiger's eye crystal in your dominant hand and sit in a grounded position. Place a lit candle

before you, representing your inner flame. As you inhale, imagine a protective container of wisdom encircling your body in indigo light. As you exhale, visualize golden light filling your heart and radiating outward.

Repeat “I channel my inner fire with wisdom and strength. Discipline is the sacred path that reveals my true radiance,” three times, then close your eyes and picture yourself stepping forward with the power and confidence of the tiger — steady, sovereign, and unafraid of the path ahead.



# JUPITER IN LEO

## VICTORY

### Key Terms:

- ◆ Recognition
- ◆ Radiance
- ◆ Triumph

### Timeline:

August 2–11

### Visual Description

A radiant queen, crowned in golden light, rides a majestic lion along a celestial pathway paved in sunlit gold. Her crimson and gold robes trail with regal grace as the Sun blazes behind her, forming a luminous halo of sovereignty. Around her, six sunflowers shower her with confidence, and golden sparks scatter into the heavens, symbolizing joy, vitality, and creative abundance. The lion, steady and powerful, symbolizes courage, loyalty, and the sacred responsibility of leadership. Above, Jupiter glows beside the Leo constellation, blessing this union of expansion and radiance with triumph.

### **Card Message**

Jupiter in Leo expands the heart, creative expression, and leadership. This placement is where abundance meets influence – a time to rise into brilliance and share your gifts and true radiance with the world. These energies remind us that true victory is about protecting, uplifting, and guiding those in your care.

The Victory card signals a season of recognition, growth, and visibility. You are being asked to step forward, trusting that your charisma and joy will naturally manifest opportunities your way. Yet this also carries responsibility: the triumphs are not for you alone, but for the collective you inspire. This invitation is to embody victory as service – leading with the heart, courage, and integrity so your radiance becomes a legacy of light.

### **Color Rays**

Turquoise + Orange — blending higher vision with radiant joy.

### **Crystal Companions**

Sunstone + Sugilite — inviting infinite abundance while weaving in wisdom and humility

### **Affirmation**

“I rise in my radiance, expanding with courage and guiding others through the strength of my heart.”

## **The Celestial Method™ — Embodiment Practice**

Place a sunstone over your solar plexus and sugilite over your heart. Stand tall, imagining the lion by your side — steady, loyal, and protective.

With each breath, visualize orange light radiating outward from your core while turquoise streams upward, connecting you to Jupiter's expansive vision.

As you recite, "I rise in my radiance, expanding with courage and guiding others through the strength of my heart," feel the balance of triumph and responsibility within you. Imagine your energy as sunlight, rippling out to bless and uplift others.



# MARS IN LEO

## COURAGE

### Key Terms:

- ◆ Valor
- ◆ Protection
- ◆ Willpower

### Timeline:

August 12–22

### Visual Description

A warrior woman stands within a golden temple, her fiery red hair flowing like a living flame. She holds a radiant shield engraved with a glowing heart, symbolizing love as the truest form of courage. Behind her, an archway bursts with starlight, creating a divine gateway illuminated by Mars in Leo's fiery presence. Seven celestial glyphs shimmer in the air around her, signifying the sacred call to bravery and authenticity. The atmosphere radiates strength, passion, and fearless devotion — courage born from the heart rather than the ego.

### **Card Message**

Mars in Leo signifies the inner flame that powers up courage, urging us to step boldly and unapologetically. This placement encourages you to align with your heart and move beyond fear or pride. Courage is the willingness to stay true to your soul, even when challenged.

When this card appears, ask yourself: Where are you being called to show up with strength, integrity, and love? If you've been feeling a lack of willpower lately, this is your cue to face your fears and embody the kind of bravery that inspires others. Remember, your fire will not fade as long as you trust in your path and walk with your head held high. The Courage card assures that you are supported.

### **Color Rays**

Red + Orange — blending bold action with creative heart-fire.

### **Crystal Companions**

Carnelian + Sunstone — a powerful fusion to ignite joyful empowerment and radiant leadership.

### **Affirmation**

“My courage shines from the heart, guiding me to act with love, strength, and integrity.”

## **The Celestial Method™ — Embodiment Practice**

Hold carnelian or sunstone to your heart center. Stand tall, feet firmly planted, and breathe deeply into your chest. With each inhale, visualize a flame glowing brighter within your heart.

With each exhale, see that flame extend outward, creating a radiant shield of light around you. Whisper, “My courage shines from the heart, guiding me to act with love, strength, and integrity,” aloud and feel your courage expand, ready to guide you forward with passion and love.



## MERCURY IN SAGITTARIUS EXPLORATION

### **Key Terms:**

- ◆ Lessons
- ◆ Seeker
- ◆ Meaning

### **Timeline:**

November 22 –  
December 2

### **Visual Description**

A woman sits at an ancient wooden desk within a grand celestial hall, scrolls and books scattered around her as knowledge overflows into the cosmos. Before her, a vast star map unfurls into the night sky, blending parchment with starlight, as if the universe itself is revealing its design. Mercury gleams above in the Sagittarius constellation, illuminating her quest for wisdom. Eight loose pages swirl through the air, carried by unseen currents of inspiration, symbolizing the infinite directions thought and truth can travel.

### **Card Message**

Mercury in Sagittarius symbolizes the restless search for meaning. It expands the mind beyond the details and into the endless horizon of truth, philosophy, and higher wisdom. This placement thrives when stepping beyond the mundane to explore new ideas, landscapes, and perspectives. Words hold weight and meaning that can pivot storylines.

This card asks: What larger story are you seeking? If you're feeling a lack of faith or closed off from opportunities, open your mind and believe in something bigger. Mercury in Sagittarius reminds you that exploration is more than traveling—it's about expanding the borders of your perception and sharing what you discover.

### **Color Rays**

Yellow + Turquoise — a supportive pair for mental clarity while stepping out of your comfort zone.

### **Crystal Companions**

Sodalite + Clear Quartz — to seek out truth and insight while navigating different perspectives.

### **Affirmation**

“My words and thoughts carry vision. I expand my mind and share wisdom that inspires.”

## **The Celestial Method™ — Embodiment Practice**

Hold sodalite in one hand and clear quartz in the other. Sit upright and close your eyes, envisioning a golden path stretching beyond the horizon. With each inhale, breathe in yellow light filling your mind with clarity; with each exhale, see turquoise light expanding outward into infinite space.

As you recite, “My words and thoughts carry vision. I expand my mind and share wisdom that inspires,” allow a moment to pass and then write a single sentence or phrase that captures your higher truth in this moment.

This will be a guiding star for your journey ahead.



## MOON IN SAGITTARIUS FREEDOM

### **Key Terms:**

- ◆ Liberation
- ◆ Bliss
- ◆ Emotional Honesty

### **Timeline:**

December 3–12

### **Visual Description**

A radiant woman in a flowing white gown stands on the edge of a mountain peak, her arms open wide in surrender to the cosmos. Her aura glows with a violet-pink radiance, as though she herself is morphing into starlight. Above her, a luminous Moon shines among countless constellations, while nine golden stars scatter across the sky like sparks of destiny. Below, a glowing river of light winds through the valleys, symbolizing the uncharted journey of the soul. The scene embodies release, awe, and the emotional liberation that comes with trusting your inner compass.

### **Card Message**

The Moon in Sagittarius represents the quest for freedom, vision, and emotional truth. This placement stirs the heart to break free from boundaries and seek experiences that expand the soul. Here, the spirit longs to feel untethered from limitations and to find safety in the wild, unfiltered openness of life.

Freedom is felt as emotional spaciousness—the ability to breathe deeply, laugh fully, and trust the path ahead. This card reminds you that your feelings are not meant to chain you, but to guide you toward growth. By following where your heart feels most alive, you'll discover that expansion itself is a form of healing.

### **Color Rays**

Silver + Turquoise — an ideal set to fine-tune intuition and emotive intelligence.

### **Crystal Companions**

Amethyst + Sodalite — to trust in your soul's wisdom while navigating new paths.

### **Affirmation**

“My spirit is free, my heart is open, and I trust the journey of my soul.”

## **The Celestial Method™ — Embodiment Practice**

Step outside beneath the open sky, holding amethyst or sodalite. Spread your arms wide, letting your chest expand as though embracing the horizon.

Inhale deeply, visualizing silver light streaming down from the Moon into your heart, blending with turquoise light that radiates outward.

Feel your breath lengthen, your body soften, and your spirit open. And state, “My spirit is free, my heart is open, and I trust the journey of my soul,” to allow yourself to sense the vast freedom within.



## SATURN IN SAGITTARIUS PRINCIPLE

### Key Terms:

- ◆ Accountability
- ◆ Commitment
- ◆ Higher Truth

### Timeline:

December 13–21

### Visual Description

On a mountain ledge, a figure sits in front of a great stone monolith etched with a glowing sacred glyph. With chisel and hammer in hand, they carve wisdom into permanence, embodying discipline aligned with truth. A trail of ten stones curves along the cliff, symbolizing integrity and trust in your devotedness to endeavors. Behind them, Saturn hovers steadily in the night sky, its rings a symbol of structure and accountability. A radiant star shines nearby, representing divine guidance, while the Sagittarius constellation glimmers above the peaks. The scene evokes dedication to principle — the shaping of life through responsibility to higher ideals.

### **Card Message**

Saturn in Sagittarius anchors expansive vision with dedication. Sagittarius seeks freedom, exploration, and higher knowing, while Saturn brings accountability, discipline, and structure. Together, they remind you that building a lasting vision requires both inspiration and the steady application of principles that endure the test of time.

It is time to reflect on the truths that guide your life. What beliefs shape your actions, and which principles are etched into your soul as guides? If you have been feeling scattered lately, this card encourages you to devote yourself to a path of wisdom and responsibility. Remember, freedom anchored in integrity becomes lasting liberation.

### **Color Rays**

Indigo + Amber — to maintain discipline in your goals while trusting in your divine path.

### **Crystal Companions**

Smoky Quartz + Lapis Lazuli — to cultivate your goals while transmuting past limitations.

### **Affirmation**

“I anchor my freedom in truth, walking with integrity, purpose, and higher vision.”

## **The Celestial Method™ — Embodiment Practice**

Hold smoky quartz in one hand and lapis lazuli in the other. Sit tall, imagining a glowing indigo pillar of light descending from Saturn into your spine, grounding you with discipline.

Then, visualize an amber flame at your heart, expanding outward with Sagittarius' vision. Breathe deeply, feeling the harmony between structure and freedom.

As you state, "I anchor my freedom in truth, walking with integrity, purpose, and higher vision," let the words resonate as vows carved into your soul.



EARTH SUIT



# JUPITER IN CAPRICORN

## PERSEVERANCE

### Key Terms:

- ◆ Strategy
- ◆ Endurance
- ◆ Progress

### Timeline:

December 22-30

## Visual Description

A cloaked traveler ascends a winding stone path carved into the side of a mountain, moving with steady resolve toward a glowing golden archway set into the rock. The arch radiates opportunity and higher wisdom, etched with ancient glyphs of guidance. Overhead, Jupiter rises vast in the Capricorn sky, with its constellation glimmering beside it, offering vision tempered by discipline. At the traveler's feet, two whole shells rest upon the stones, symbols of protection, patience, and the treasures revealed through endurance. The scene evokes the balance of aspiration and grounded wisdom — a climb made sacred by persistence and purpose.

### **Card Message**

Jupiter in Capricorn is expansion through discipline. In contrast, Jupiter seeks abundance and vision, while Capricorn grounds this energy in structure, patience, and strategy. This placement reminds you that lasting success is built step by step, with endurance as your greatest ally.

When this card appears, it calls you to honor the slow climb — to trust that every effort contributes to the greater legacy you are building. Opportunities will come, but their true potential unfolds only when rooted in perseverance and awareness. This card confirms that patience is the foundation for sustainable growth and acceptance. With strategy, consistency, and a grounded vision, you will discover paths that avoid superficiality and lead to lasting fulfillment in your journey.

### **Color Rays**

Amber— creating optimism and resilience in the face of opportunities and challenges.

## **Crystal Companion**

Ammonite -- Symbolizing or being the golden spiral (aka Fibonacci sequence), as this fossil embodies sacred geometry. With its spiral, it represents the cycle of life that continues, while encouraging spiritual growth, flexibility, and the release of negative tendencies.

### **Affirmation**

“I expand with patience, building my dreams on foundations that last.”

## **The Celestial Method™ — Embodiment Practice**

Hold a piece of ammonite in your dominant hand and stand with your feet firmly planted. Close your eyes and envision a mountain path rising before you, lit by turquoise light. With each breath, see yourself taking steady steps upward, indigo light anchoring your resolve.

Speak the affirmation “I expand with patience, building my dreams on foundations that last” aloud, feeling your body rooted yet uplifted. When ready, place the crystal at your heart, sealing your commitment to patience and purposeful growth.



## MARS IN CAPRICORN ASCENT

### Key Terms:

- ◆ Milestone
- ◆ Resolution
- ◆ Achievement

### Timeline:

December 31 –  
January 9

**Visual Description** A lone figure ascends a winding stone staircase carved into a sheer mountain cliff, each step lit by glowing lanterns that guide the way upward. At the top rests a white temple, built into the rock, its entrance illuminated with steady light — a sanctuary reached only through patience and effort. Above, Mars glows fiery red against the Capricorn constellation, its presence a beacon of determination. Three intricately crafted vessels rest along the lower steps, symbols of endurance, discipline, and the treasures earned through perseverance. The scene embodies ambition harnessed with strategy, where each

step taken becomes a sacred act of devotion to the climb.

### **Card Message**

Mars in Capricorn is ambition grounded in discipline. Here, raw drive is given form and direction, turning effort into mastery and struggle into steady achievement. This placement reminds you that the truest victories are not rushed but built through consistency, integrity, and endurance.

This card encourages you to strategically focus your energy. Like the mountain path, success may feel steep, but every step matters. Your power lies in deliberate and sustained movement toward your goals. Mars in Capricorn reminds us that strength is found through perseverance and solid intentions. You are here to learn to transform force and impulsivity into faith and trust in your progress.

### **Color Rays**

Red + Indigo — uniting passion with patience for steady, purposeful ascent.

### **Crystal Companions**

Magnetite + Yellow Calcite — grounding ambition and aligning it with true purpose, while supporting sustained vitality for the path ahead.

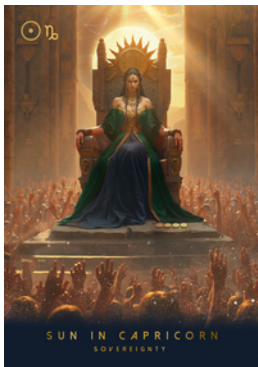
## **Affirmation**

“I rise step by step, channeling discipline and determination into lasting achievement.”

## **The Celestial Method™ — Embodiment Practice**

Hold magnetite in one hand and yellow calcite in the other. Stand tall and visualize yourself at the base of a mountain staircase glowing with red and indigo light. With each breath, imagine climbing upward — red energy fueling your drive, indigo anchoring your focus.

Speak the affirmation, “I rise step by step, channeling discipline and determination into lasting achievement,” aloud as you take three grounded steps forward, embodying steady progress. When finished, place the crystals near your workspace or altar to keep your path aligned with purposeful ascent.



## SUN IN CAPRICORN SOVEREIGNTY

### **Key Terms:**

- ◆ Sacred Authority
- ◆ Honor
- ◆ Legacy

### **Timeline:**

January 10-19

### **Visual Description**

A regal queen sits upon a carved stone throne, bathed in golden sunlight as countless hands rise toward her in awe. Her emerald and indigo robes cascade heavily down the temple steps, reflecting the wisdom she has earned through perseverance. Behind her, the Sun blazes like a radiant crown, its light infused with orange fire along with the Capricorn constellation, illuminating the ancient pillars that frame her rule. At her feet rest four golden coins — emblems of material mastery, yet subtle reminders of ambition's weight.

### **Card Message**

You are ready to step fully into your power and recognize the mountains, peaks, and valleys you are climbing. You are closer than you think. If you are rooted only in ambition, it leaves the heart unfulfilled, but leadership aligned with soul purpose inspires and sustains. You are asked to reflect: What legacy are you building, and does it serve your higher calling?

Selecting this card indicates that you are ready to step into the role of a visionary leader. You are here to lead with presence, humility, and integrity. Remember that your authenticity and honesty illuminate the path for others to do the same.

### **Color Rays**

Orange + Indigo — the fusion of vitality and wisdom, balancing ambition with soul-guided purpose.

### **Crystal Companion**

Lepidolite — calming ambition with balance, grounding leadership in clarity and compassion.

### **Affirmation**

“I rise with integrity, leading not from power over others, but from vision, wisdom, and service.”

### **The Celestial Method™ — Embodiment Practice**

Hold a piece of lepidolite in your dominant hand while standing tall with feet firmly rooted. Visualize a crown of orange fire and indigo light forming above your head, streaming through your body until it settles at your heart.

Speak the affirmation, “I rise with integrity, leading not from power over others, but from vision, wisdom, and service,” three times. Then extend your hand outward with the crystal, imagining your light guiding others with compassion. Place the crystal over your heart to seal your leadership with wisdom and service.



## MERCURY IN TAURUS CONTEMPLATION

### **Key Terms:**

- ◆Patience
- ◆Practicality
- ◆Ponder

### **Timeline:**

April 20–30

### **Visual Description**

In a moss-covered grove, an elder scribe sits cross-legged before an open journal, her quill moving with intention across the page. Five golden candlelight flickers beside her, illuminating sacred texts and ancient symbols carved into the nearby tree. Around her, glowing constellations of letters and runes spiral through the air, weaving Mercury's gift of communication with Taurus' grounded wisdom. The Earth itself seems to listen as she writes, steady and deliberate. Overhead, Mercury shines above the Taurus constellation, its presence anchoring thought into form. The scene conveys patience, reflection, and the enduring strength of words written with care.

### **Card Message**

Mercury in Taurus teaches that wisdom unfolds at its own pace. While Mercury seeks quickness and agility, Taurus slows the mind, rooting communication in clarity, simplicity, and purpose. This placement asks you to weigh your words carefully, to ground your ideas before sharing them, and to remember that enduring truths are not rushed into existence.

When this card appears, it calls you to deliberate with patience. Take time to let your thoughts ripen into clarity before acting or speaking. The beauty of Mercury in Taurus lies in its capacity to make ideas tangible — to build knowledge brick by brick until it becomes something lasting. Trust that slowing down does not limit your progress, but actually strengthens it. Like the steady growth of a tree, your words and choices can become pillars of stability when rooted in care and integrity.

### **Color Rays**

Yellow + Green — harmonizing intellect with patience and practicality.

### **Crystal Companions**

Moss Agate + Sodalite — patience, steadiness, and grounded communication.

## **Affirmation**

“My words are rooted in clarity and care. What I create endures.”

## **The Celestial Method™ — Embodiment Practice**

Hold moss agate in one hand and sodalite in the other. Close your eyes and visualize a soft, yellow light at the center of your mind, blending with green light that rises from the Earth below.

Breathe slowly and imagine your thoughts moving like roots, anchoring deeper with each inhale. Speak the affirmation “My words are rooted in clarity and care. What I create endures,” aloud three times, allowing your voice to carry calm authority. When ready, place the crystals on a written intention or journal page to seal your words into form.



## MOON IN TAURUS FLOURISH

### Key Terms:

- ◆ Co-Create
- ◆ Fertility
- ◆ Steadiness

### Timeline:

May 1-10

### Visual Description

In a serene forest clearing under the glow of a full Moon, a divine earth-born goddess rests with quiet grace. Her body is entwined with ivy and tender green leaves, uniting her with the living earth itself. Around her crown and body, butterflies drift in soft spirals, symbols of transformation and renewal. In her arms, she cradles her pregnant form visualized as the glowing Earth, showing that infinite potential and creative possibility can be found from within. Six peach-colored blossoms unfurl beside her beneath the silver glow, while the Taurus constellation shimmers faintly above. The scene radiates a sense of grounded abundance, serenity, and the steady promise of a flourishing life.

### **Card Message**

Moon in Taurus is an exalted and auspicious placement, magnifying your ability to root, receive, and thrive. It is fertile ground for the dreams, relationships, and endeavors you wish to bring into form. This card reminds you that creation is not a race but a process — one that unfolds with patience, care, and devotion.

This is a sign that you are safe to grow and develop. Selecting this card foretells that you are ready to birth something or someone into existence. Your roots are strong, your soil is rich, and your spirit is prepared to expand. This is a moment to nourish what matters most and to let it bloom in its own time rather than forcing outcomes. Flourishing here is both physical and spiritual — a steady rhythm of growth, abundance, and emotional safety. You are supported in this cycle of becoming.

### **Color Rays**

Green + Silver — grounding growth with lunar nourishment.

### **Crystal Companions**

Moss Agate + Moonstone — an ideal pair to manifest abundance while awakening intuitive flow.

## **Affirmation**

“I flourish with patience and devotion. I am safe to grow, to create, and to embody abundance.”

## **The Celestial Method™ — Embodiment Practice**

Hold moss agate in your left hand and moonstone in your right. Sit in a quiet space and close your eyes, visualizing silver light flowing from the Moon above as green light rises from the Earth below, meeting at your heart.

With each inhale, feel your body rooted like a tree; with each exhale, imagine blossoms unfurling around you. Speak the affirmation, “I flourish with patience and devotion. I am safe to grow, to create, and to embody abundance,” aloud three times, anchoring your intention to grow with steadiness and grace.



## SATURN IN TAURUS CULTIVATION

### **Key Terms:**

- ◆ Discipline
- ◆ Stability
- ◆ Harvest

### **Timeline:**

May 11–20

### **Visual Description**

A sturdy stone cottage stands nestled within a flourishing vineyard, its walls draped in ivy and its windows glowing with quiet strength. Beneath heavy grapevines, clusters hang ripe and full, promising the sweetness of patient care. A powerful bull stands firmly on the path, its presence embodying endurance, determination, and grounded authority. At the foot of the cottage rests a treasure chest, its lid open to reveal seven golden coins spilling onto the earth, symbolizing material reward and the fruits of diligent labor. Overhead, Saturn hovers near the Taurus constellation, watching with steady wisdom,

while mountains rise in the distance — a reminder of the lasting strength gained through effort and devotion.

### **Card Message**

Saturn in Taurus is the cultivation of stability through patience, endurance, and mindful effort. This placement teaches that prosperity is not built overnight but through consistent tending of your resources, values, and energy. Like the slow ripening of grapes into wine, this card reminds you that true abundance matures with time.

It is time for you to witness the cultivation process — to invest your time, energy, and resources with care, trusting that what you build will last. Saturn provides discipline, while Taurus offers steadiness and grounding. Observe how rooted you are in your commitments and the process of nurturing them into form. The message here is clear: lasting reward comes from patience, integrity, and trusting the slow unfolding of growth.

### **Color Rays**

Indigo + Green — harmonizing structure with steady growth.

### **Crystal Companions**

Smokey Quartz + Moss Agate — anchoring you in

patience while helping you cultivate prosperity with balance and endurance.

### **Affirmation**

“I cultivate with patience, and my steady efforts bring lasting abundance.”

### **The Celestial Method™ — Embodiment Practice**

Hold smoky quartz in one hand and moss agate in the other. Close your eyes and visualize green vines slowly growing around you, weaving stability, strength, and nourishment into your aura.

See indigo light forming a protective framework around these vines, strengthening their roots. Speak the affirmation, “I cultivate with patience, and my steady efforts bring lasting abundance,” aloud, then place the stones on the earth or a table, symbolizing your willingness to cultivate your dreams with patience and devotion.



# SUN IN VIRGO

## WEAVE

### Key Words:

- ◆ Order
- ◆ Service
- ◆ Integration

### Timeline:

August 23 –  
September 1

## Visual Description

A radiant loom stands at the heart of a sunlit grove, its threads glowing as if infused with starlight. Golden rays of the Virgo Sun pour through the branches above, illuminating the path of polished green stones that wind gently through the trees. Six rolls of soft thread rest at the loom's base, awaiting their turn to be woven into a greater pattern. Overhead, the Virgo constellation shimmers faintly, reminding us of the divine blueprint behind earthly details. This sacred weaving scene embodies the quiet artistry of Virgo, where devotion to craft, care, and precision transform the ordinary into exceptional.

### **Card Message**

The Sun in Virgo shines its light on the power of integration. Virgo energy teaches us that purpose is not found only in grand visions but also in the small, intentional acts that bind life to meaning. This card speaks to the art of weaving — taking diverse strands of your experiences, skills, and responsibilities, and bringing them into harmony through patience and care.

This card is here to ask you to honor your daily rituals and the seemingly “small things” that have a greater impact. Service, order, and refinement are sacred acts that anchor vision into reality. By integrating the Sun’s clarity with Virgo’s diligence, you illuminate the threads of your soul’s work, constructing a life that is both purposeful and whole.

### **Color Rays**

Yellow + Orange — weaving inspiration into form with grounded warmth.

### **Crystal Companions**

Carnelian + Aventurine — grounding creativity with focus, blending inspiration with steady progress.

### **Affirmation**

“I weave my gifts into patterns of service, creating beauty and meaning through each intentional act.”

### **The Celestial Method™ — Embodiment Practice**

Hold a piece of carnelian in one hand and aventurine in the other. Sit comfortably and imagine yourself at a luminous loom, golden sunlight streaming over your shoulders. With each breath, see yourself weaving threads of yellow and orange light into a tapestry that reflects your current life path.

Speak the affirmation, “I weave my gifts into patterns of service, creating beauty and meaning through each intentional act,” and visualize the threads aligning smoothly, each one an act of service, devotion, and creativity. When finished, place the crystals together near a journal or workspace to bless your daily practices with Virgo’s sacred order.



# VENUS IN VIRGO PURITY

## **Key Terms:**

- ◆ Faithful
- ◆ Refinement
- ◆ Attentive

## **Timeline:**

September 2–11

## **Visual Description**

A serene chamber glows in soft light as a white cat rests before a round mirror-like pool, its surface encircled by nine clusters of rose quartz. Behind it, tall crystalline towers rise like guardians of sacred love, shimmering in delicate hues of pink. White orchids bloom gracefully along each side, their purity mirroring devotion to beauty expressed through simplicity and care. Above, Venus radiates its golden radiance above the Virgo constellation, illuminating the scene with warmth and precision. The air feels still yet vibrant, a sanctuary of devotion where love is not loud or lavish but quietly intentional, woven through acts of refinement and presence.

## **Card Message**

Venus in Virgo conveys that consistency, thoughtful care, and meaningful detail are the foundations of true love and lasting value. Where Venus desires connection and beauty, Virgo channels this into routine, authentic devotion, and actions that uplift others in pragmatic ways. This is a time to honor the sacred in the everyday and to find fulfillment in showing up sincerely for what you cherish.

You are invited to reflect on the ways you share love in your everyday life. Are your relationships, self-care practices, or creative expressions grounded in sincerity and attentiveness? Venus in Virgo teaches that purity and intention are even more impactful than perfection and criticism. It is the willingness to infuse love in every step or choice. In this way, devotion becomes an offering, and beauty is born from authenticity and care.

## **Color Rays**

Green + Yellow — harmonizing love with mindful presence.

## **Crystal Companions**

Rose Quartz + Aventurine — opening the heart to unconditional love while grounding it in steady, nurturing action.

## **Affirmation**

“I embody love through devotion, letting beauty and care flow into the details of my life.”

## **The Celestial Method™ — Embodiment Practice**

Sit in a quiet space with rose quartz in your left hand and aventurine in your right. Close your eyes and visualize yourself sitting before a pool of light, its surface reflects both your tenderness and your strength.

With each breath, see green and yellow rays interweaving around you, filling your heart with devotion and clarity. Speak the affirmation, “I embody love through devotion, letting beauty and care flow into the details of my life,” letting its vibration ripple outward like circles in the pool. When finished, place the crystals on your altar or bedside as reminders that love lives in the details of daily care.



# MERCURY IN VIRGO PRECISION

## Key Terms

- ◆Clarity
- ◆Discernment
- ◆Strive

## Timeline:

September 12–22

## Visual Description

In the heart of a mountain valley, a luminous stone labyrinth spirals outward beneath a vast indigo sky. Its walls are formed of glowing blue crystals, radiating the steady brilliance of truth and structure. Above the labyrinth, ten ancient scrolls drift upward in graceful sequence, as though guided by unseen currents of wisdom. Mercury shines brightly in the Virgo constellation, casting golden rays that illuminate each parchment, symbolizing knowledge ordered, recorded, and refined. The scene evokes patience, clarity, and the devotion to detail that transforms complexity into elegant simplicity.

### **Card Message**

Mercury in Virgo teaches us the art of clarity, refining our thoughts and words toward perfection. This placement speaks to the gift of accuracy— where ideas are carefully shaped, words are measured, and actions are aligned with precision. This energy teaches us to cultivate mastery by carefully reviewing details.

The message of this card invites you to clear away distractions and pay attention to the finer threads of your work. Reflect before you speak, refine before you act, and trust that pure intentions will flow naturally as you trust yourself. Be mindful that perfectionism can lead to inner criticism; instead, focus on methodical order, clarity, and grounded thinking

### **Color Ray**

Yellow — clarity of thought and illumination.

### **Crystal Companion**

Sodalite + Aventurine — balancing intellectual sharpness with grounded growth and calm discernment.

### **Affirmation**

“My clarity creates pathways of understanding and purposeful action.”

## **The Celestial Method™ — Embodiment Practice**

Sit quietly with sodalite in one hand and aventurine in the other. Visualize a glowing yellow light circling your mind, sharpening focus and illuminating your thoughts. Imagine yourself walking a labyrinth, each step steady, each turn deliberate. With every breath, repeat the affirmation “My clarity creates pathways of understanding and purposeful action,” aloud, letting your mind and body align with clarity. When finished, place the stones beside your journal, inviting precision into your following words or actions.

AIR SUIT



# MOON IN LIBRA

## PEACE

### **Key Terms:**

- ◆ Harmony
- ◆ Acceptance
- ◆ Tranquility

### **Timeline:**

September 23 –  
October 2

### **Visual Description**

Under the soft glow of the Moon, a serene woman sits in meditation, her posture steady and graceful. Blossoms drift gently through the air as willow trees bow in quiet reverence. Around her, crystalline towers radiate calming light, their pale hues shimmering in harmony with the silver sky. Two swords rest upright on either side, no longer weapons but guardians of stillness, symbolizing the choice of peace over conflict. Above, the Libra constellation shines faintly, casting equilibrium into the tranquil scene.

### **Card Message**

Moon in Libra signifies the heart's longing for peace, balance, and connection. Here, the emotions find clarity through the steady rhythm of give and take, listening and being heard. This placement reminds you that true peace can be found as you face intensities with a calm mind and complete presence.

Selecting this card reveals the need to center yourself in calm awareness. Are you overcompromising your heart to avoid confrontation? Perhaps a situation requires you to step back, breathe, and seek perspective before responding. Your peace is cultivated when you align your inner self with grace, choosing balance over reaction. Just as the Moon in Libra illuminates relationships, this card encourages you to nurture harmony within yourself and others.

### **Color Rays**

Pink + Silver — guiding emotions toward clarity, compassion, and calm resolution.

### **Crystal Companions**

Labradorite + Charoite — opening pathways of intuition while dissolving inner tension, anchoring you in serenity and balance.

### **Affirmation**

“I choose balance and harmony, finding peace within myself and reflecting it outward.”

### **The Celestial Method™ — Embodiment Practice**

Hold labradorite in one hand and charoite in the other. Close your eyes and breathe deeply, imagining silver light descending from above while pink light rises from the earth below. As the two rays meet at your heart, feel them weaving harmony into your emotions. Speak the affirmation “I choose balance and harmony, finding peace within myself and reflecting it outward,” letting its resonance ripple outward. When ready, place the crystals before you in balance, anchoring your intention to embody peace.



## SATURN IN LIBRA RESPONSIBILITY

### Key Terms:

- ◆ Balance
- ◆ Integrity
- ◆ Accountability

### Timeline:

October 3–12

**Visual Description** A ship sails through a sea of clouds, its golden wheel steered by a woman cloaked in white. Saturn hovers vast above, with Libra's constellation glowing faintly beside it, casting an air of solemn guidance. Three swallows soar gracefully in the distance, symbols of freedom shaped by protection and devotion. Below, garnet crystals gleam like anchors of strength, grounding this airy voyage with weight and resolve. The scene embodies the harmony of responsibility — a vessel guided not by force but by steady, balanced direction.

**Card Message** Saturn in Libra teaches that true responsibility is not a burden but a sacred alignment between duty and fairness. This placement challenges you to navigate your life with integrity, considering how your choices impact both yourself and others. Balance is key: too much rigidity stifles, but too much compromise erodes your boundaries.

This card serves as a reminder that your commitments hold weight and power. You are asked to honor them with patience, accountability, and fairness. Responsibility can feel restrictive, but see it as an opportunity to evolve your perspective. Where can you approach your commitments with more fairness or patience? Like a ship guided by steady hands, your life moves forward when responsibility is accepted as freedom—the freedom to build trust, stability, and harmony.

### **Color Rays**

Indigo + Green — a fusion of grounded vision and balanced choice.

### **Crystal Companion**

Garnet — igniting inner strength, stability, and responsibility, while helping you remain devoted to your commitments.

### **Affirmation**

“I honor my responsibilities with balance and integrity, steering my life with fairness and strength.”

### **The Celestial Method™ — Embodiment Practice**

Hold a garnet in your hand and close your eyes. Visualize a golden ship moving steadily across the sky, guided by your hands on its wheel. Breathe deeply as indigo light flows down from Saturn above, while green light radiates outward in waves of harmony. Speak the affirmation aloud, allowing the crystal to anchor your sense of responsibility as empowerment rather than weight.



# JUPITER IN LIBRA HARMONY

## Key Terms:

- ◆ Cooperation
- ◆ Balance
- ◆ Unity

## Timeline:

October 13–23

## Visual Description

In the clouds, six women sit in a perfect circle around radiant blue crystals, their white garments glowing in the celestial light. Above, Jupiter shines brilliantly with Libra's constellation nearby, blessing the gathering with wisdom and equilibrium. Four feathers drift gently through the sky, symbols of peace, lightness, and divine order. The scene radiates serenity, suggesting that true abundance is born not in isolation but in shared resonance.

## Card Message

Jupiter in Libra embodies its expansiveness through grace, inviting you to grow by cultivating

balance and cooperation. This placement encourages you to see that relationships, alliances, and community can shape your greater path. It reminds you that unity manifests abundance, and that peace with others can only happen when you store harmony within yourself.

This card signals a time to strengthen bonds, collaborate, and create balance in areas that have felt uneven. It asks you to notice where growth is possible through common ground, beauty, and shared vision. Richness increases when generosity and equality guide you, allowing all to rise together.

### **Color Rays**

Turquoise + Green — merging wisdom with balance to create lasting peace.

### **Crystal Companions**

Aquamarine — guiding expansion through peaceful actions and reflective listening.

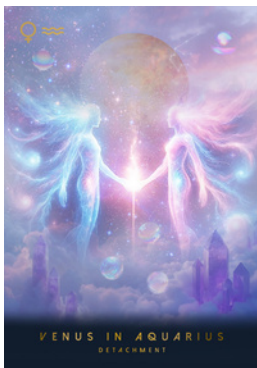
### **Affirmation**

“I expand through harmony, creating abundance by honoring balance and unity.”

## **The Celestial Method™ — Embodiment Practice**

Sit with a piece of aquamarine and rose quartz in your palms. Visualize yourself in a circle of light, seated among others whose hearts radiate in unison with yours. Breathe in turquoise rays of expansion and exhale green waves of harmony.

Speak the affirmation “I expand through harmony and create abundance by honoring unity,” feeling your energy woven into the greater whole. Allow the crystal to remind you that your greatest growth arises when you move in balance with the world around you.



## VENUS IN AQUARIUS DETACHMENT

### Key Terms

- ◆Clarity
- ◆Freedom
- ◆Higher Love

### Timeline:

January 20–29

### Visual Description

Two ethereal beings of light stand face to face in a cosmic expanse, their translucent forms glowing in shades of teal and rose. They hold a shared flame of energy between them, symbolizing connection without possession. Behind them, Venus glows above the Aquarius constellation, casting a visionary radiance across the scene. Around them, five radiant orbs float weightlessly in space, each shimmering with subtle hues — symbols of expanded awareness, multiple perspectives, and freedom from attachment. Rising crystalline structures anchor the scene below, emanating currents of pure energy that pulse upward into the infinite sky.

## **Card Message**

Venus in Aquarius teaches us the importance of approaching love with openness, clarity, and a spirit of freedom. This placement values connection not through ownership but through mutual respect and shared vision. It reminds you that true love flourishes when both individuals can evolve, breathe, and express their authentic selves.

By selecting this card, it may be time to let go of outdated expectations or dynamics that weigh on your heart. Detachment, rather than indifference, is a higher practice of allowing love to flow without control, and to trust that what is meant for you will remain. Where can you invite more space or authenticity into your relationships? By honoring both space and closeness, you create relationships built on trust, authenticity, and soul alignment.

## **Color Rays**

Teal + Pink—merging innovation with compassion to elevate love into higher realms.

## **Crystal Companions**

Ametrine—illumination, higher frequencies of love, and liberation.

## **Affirmation**

“I love with freedom, clarity, and trust, knowing that true connection honors both closeness and space.”

## **The Celestial Method™ — Embodiment Practice**

Hold an ametrine crystal in your non-dominant hand. Close your eyes and visualize five radiant orbs floating around you, each carrying a different perspective on love — freedom, clarity, respect, vision, and authenticity. With each breath, see teal and pink light weaving through the orbs, surrounding you in a field of harmonious detachment.

Speak the affirmation “I love with freedom, clarity, and trust, knowing that true connection honors both closeness and space,” letting your heart expand beyond limits. Place the crystal at your heart and crown to anchor the practice of loving freely, without fear of loss.



# MOON IN AQUARIUS RESONANCE

## Key Terms:

- ◆ Consciousness
- ◆ Frequency
- ◆ Receptivity

## Timeline:

January 30 –  
February 8

## Visual Description

A luminous figure draped in deep indigo robes stands beneath a radiant full Moon, the Aquarius constellation glittering in the sky above. Her face dissolves into a galaxy of stars, embodying the merging of self with the cosmic whole. A shimmering veil flows around her, threaded with golden sparks of light, as if her very being hums with universal vibration. Behind her, six concentric waves of teal and silver ripple outward, echoing patterns of sound and frequency, symbolizing the unseen currents of resonance that connect all beings. She stands with open arms, embodying receptivity and harmony with the greater cosmic song.

### **Card Message**

Moon in Aquarius attunes you to the frequencies beyond logic — the quiet hum of truth, intuition, and collective energy. This placement invites you to listen not only with your ears but with your entire being, recognizing that you are both an instrument and a participant in the greater symphony of life.

By selecting this card, you are encouraged to trust your inner resonance. If something feels aligned, it is because your soul is vibrating in harmony with it. If conflict arises, it may be guiding you to shift, release, or recalibrate. Moon in Aquarius reminds you that emotions, like frequencies, are not always personal — sometimes you are sensing the collective, and your task is to discern what belongs to you or what simply passes through.

### **Color Rays**

Electric Blue+ Silver — harmonizing innovation with emotional clarity.

### **Crystal Companions**

Green Selenite amplifies frequency and energetic resonance, while also increasing intuition, cycles, and emotional alignment.

### **Affirmation**

“My spirit vibrates in harmony with the universe, guiding me toward what is true and aligned.”

## **The Celestial Method™ — Embodiment Practice**

Hold a green selenite crystal in your dominant hand. Sit in stillness and imagine concentric waves of electric blue and silver light radiating from your heart, expanding outward into infinity. With each breath, feel yourself becoming both a receiver and transmitter of universal resonance.

Allow the affirmation, “My spirit vibrates in harmony with the universe, guiding me toward what is true and aligned,” to let your body hum with alignment. When ready, place the green selenite crystal over your heart or crown, anchoring your frequency into cosmic harmony.



# MERCURY IN AQUARIUS INNOVATION

## **Key Terms:**

- ◆ Insight
- ◆ Originality
- ◆ Breakthroughs

## **Timeline:**

February 9–18

## **Visual Description**

A serene face emerges from clouds, crowned by a luminous Mercury radiating with vibrant rings of energy. From the figure's mind, light bursts forth in green and teal streams, merging thought with cosmic inspiration. Six butterflies take flight from this radiant field, symbolizing transformation, freedom, and the birth of new ideas. The Aquarius constellation shimmers in the starry sky above, anchoring this vision of originality and expanded thought. The scene evokes the mind as a vessel of cosmic intelligence — alive, electric, and endlessly evolving.

### **Card Message**

Mercury in Aquarius is forward-thinking, where intellect meets creative solutions to invoke new pathways. This placement allows you to break free from convention and trust the brilliance of your unique perspective. It is all about envisioning possibilities rather than repeating what has already been done.

This card is here to tell you to welcome originality and lean into innovative thought. Your voice, your mind, and your perspective hold the keys to powerful breakthroughs. Pay attention to ideas that feel electrifying—they may be seeds of transformation for yourself and the collective. Mercury in Aquarius reminds you that true genius is born when courage and vision meet, leading you to create things beyond limitations.

### **Color Rays**

Yellow + Teal — fusing intellect with visionary innovation.

### **Crystal Companions**

Moldavite—clarity through contrast and grounded truth.

### **Affirmation**

“My mind is a channel for innovation, bringing forth ideas that expand and liberate.”

### **The Celestial Method™ — Embodiment Practice**

Hold a moldavite crystal in your non-dominant hand. Sit with your spine tall, imagining a yellow light streaming into your mind, mixing with waves of teal radiance that expand outward in all directions.

Visualize butterflies of light carrying your inspired thoughts into the cosmos, returning with fresh insight. Speak the affirmation “My mind is a channel for innovation, bringing forth ideas that expand and liberate” aloud, feeling your ideas grounded yet free, ready to shape new realities.



## JUPITER IN GEMINI CURIOSITY

### **Key Terms:**

- ◆ Exploration
- ◆ Learning
- ◆ Wonder

### **Timeline:**

May 21–31

### **Visual Description**

An ancient book glows open at the heart of a celestial temple, its golden pages radiating light that spirals upward into the heavens. Eight scrolls rise into the air, carried on unseen currents, symbolizing knowledge in motion and the endless quest for discovery. Above, Jupiter expands in the Gemini sky, its constellation twinkling nearby, illuminating paths of wisdom and playful inquiry. Pillars of stone frame the scene, their bases surrounded by crystalline clusters that amplify the vibration of curiosity. The entire atmosphere hums with possibility, inviting the seeker to open their mind and embrace the infinite.

### **Card Message**

Jupiter in Gemini awakens a hunger for learning, connection, and exploration. This placement thrives in curiosity, encouraging you to ask questions, seek conversations, and discover the hidden threads that link ideas together. Every thought or word exchanged creates a possibility for growth and expansion.

This card invites you to engage in study and see the joy of evolving your mind. Follow conversations, books, or teachings that light you up, but also remember to strike a balance between breadth and depth. With Jupiter's boundless energy, it can be tempting to skim the surface of many ideas, yet the true gift comes when curiosity leads to meaningful understanding. It is a sign that your spirit is alive and evolving, forever seeking wisdom that will guide your next step on the path.

### **Color Rays**

Violet + Orange — blending wisdom with playful exploration.

### **Crystal Companions**

Apophyllite — a unique mix to seek higher insight while anchoring truth, introspection, and correcting imbalances.

### **Affirmation**

“My curiosity opens pathways to wisdom, weaving wonder into truth.”

### **The Celestial Method™ — Embodiment Practice**

Hold an apophyllite crystal in your hands. Sit in stillness, envisioning an orange light illuminating your mind while violet waves spiral outward like pathways of discovery.

See scrolls of light rising into the sky, each carrying a question, and watch as answers return in radiant sparks. Repeat the “My curiosity opens pathways to wisdom, weaving wonder into truth” affirmation aloud, allowing your breath to anchor you in curiosity that is both playful and wise.



## MARS IN GEMINI DEBATE

### **Key Terms:**

- ◆ Anticipate
- ◆ Tension
- ◆ Mental Agility

### **Timeline:**

June 1–10

### **Visual Description**

Beneath a violet sky streaked with stardust, two serpents coil in the desert sands, locked in a poised exchange of dominance and wit. Their tongues flicker with sharp intensity, embodying the spirited clash of ideas. Above them, Mars glows crimson against the Gemini constellation, casting fiery light across the nine floating glyphs of language and thought. The desert landscape feels charged with energy, the silence between the serpents as powerful as their strikes. The scene evokes the essence of dialogue as both weapon and tool — a dance of words that can either divide or clarify truth.

## **Card Message**

Mars in Gemini embodies the fire of the mind sharpened into action. Here, intellect becomes a battlefield where words carry both heat and precision. This placement highlights the power of debate — the ability to defend your ideas, challenge others, and refine thought through exchange.

Your card message signals that you are called to use your voice with strategy. Yet it also warns of scattering energy through arguments that serve only the ego rather than the truth. Debate can bring new perspectives, but it can also flare up division when rooted in impatience or defensiveness. Where can you pause for clarity before responding? The medicine lies in discernment — knowing when to speak, when to listen, and when to step back. Like the serpents, you can be even more precise when stilled for a moment before you act.

## **Color Rays**

Red + Violet— fusing action with quick intellect.

## **Crystal Companions**

Zoisite — soothing expression and remaining calm within dialogue. It helps you manifest your truth rather than conform to others' opinions. It also transforms destructive urges into peace and acceptance.

### **Affirmation**

“My words carry power; I choose to speak with clarity, purpose, and balance.”

### **The Celestial Method™ — Embodiment Practice**

Hold zoisite in your dominant hand. Sit in stillness and breathe deeply, envisioning a thread of red light running through your spine and a violet light circling your mind. Imagine these energies weaving together in your throat, empowering your words with both fire and wisdom.

State the affirmation, “My words carry power, and I choose to speak with clarity, purpose, and balance,” aloud, feeling both grounded in truth and open to understanding.



## SUN IN GEMINI

### VERSATILITY

#### Key Terms:

- ◆ Adaptability
- ◆ Curiosity
- ◆ Expression

#### Timeline:

June 11–20

### Visual Description

A radiant starling perches gracefully on a branch, its feathers shimmering with iridescent hues that shift from green to violet under the midday Sun. Around it, ten pine needles drift through the bright forest air, carried by a playful breeze that suggests change and motion. The Gemini constellation glimmers faintly above, anchoring the scene in cosmic duality. The bird's posture is alert yet fluid, ready to take flight or shift direction at any moment. The imagery captures Gemini's gift of adaptability — the ability to thrive in many environments and to find beauty in movement, diversity, and dialogue.

## **Card Message**

The Sun in Gemini illuminates the power of versatility and the joy of exploring many facets of life. This placement thrives on curiosity, communication, and the exchange of ideas. It calls to embrace variety, to express oneself in multiple ways, and to honor the flexibility that allows us to navigate shifting circumstances with grace.

By selecting this card, you are reminded that your strength lies in your ability to adapt and explore. Just as the starling sings with a chorus of voices, you too have many tones, perspectives, and gifts to share. Be mindful not to scatter your energy in too many directions. True versatility becomes impactful when guided by intention, allowing you to bring lightheartedness and innovation into every interaction.

## **Color Rays**

Rainbow — blending curiosity with radiant self-expression and being accepting of diversity.

## **Crystal Companions**

Rainbow Agate— It embodies the universal rainbow symbol of hope. The bright colors are believed to inspire creativity, spark joy, and invite a brighter, more confident outlook on life.

### **Affirmation**

“I embrace my versatility, expressing myself with curiosity, clarity, and joy.”

### **The Celestial Method™ — Embodiment Practice**

Hold a rainbow agate in your hands. Stand with your feet hip-width apart, and imagine a rainbow ray filling your mind with clarity and radiance as it warms your heart with creative flow and hope. Picture yourself as the starling, able to perch, adapt, and soar into new experiences with ease.

Recite “I embrace my versatility, expressing myself with curiosity, clarity, and joy,” aloud, letting your voice shift in tone and rhythm, embodying Gemini’s playful versatility.

WATER SUIT



## VENUS IN CANCER DEVOTION

### **Key Terms:**

- ◆ Empathy
- ◆ Soul Love
- ◆ Belonging

### **Timeline:**

June 22—July 1

### **Visual Description**

A luminous woman with flowing silver hair stands in a river, holding two golden chalices that glisten beneath gentle rainfall. The sky glows with Venus above, casting a warm peach-colored glow across the misty landscape, while the Cancer constellation twinkles faintly. At her feet, koi fish swim among shimmering river stones, symbolizing tenderness, flow, and the softness of life. Pale-blue morning glories bloom along the riverbank, their petals opening softly in the mist, reminding us that love unfolds with patience and care. Her gown radiates a white glow, blending seamlessly with the river currents— she is the embodiment of a love made safe, a love made

sacred. The rainfall around her nourishes the scene, yet its abundance also hints at the shadow of devotion: that even love, when overextended, may blur boundaries and overwhelm.

### **Card Message**

Venus in Cancer teaches us to explore the bonds that anchor love in devotion, nurture, and belonging. This placement carries the wisdom of loyalty and the power of tenderness. It speaks to the beauty of emotional bonds that create a sense of home — whether through family, chosen kin, or the sanctuary you build within yourself.

This card arrives as a reminder that love deepens not through grand gestures but through daily devotion, the steady presence that says: I am here. Still, it cautions against the shadow of overextension — giving so much of yourself that you are left drained. True devotion honors reciprocity, allowing your love to flow while keeping your own heart nourished and fulfilled.

### **Color Ray**

White + Peach— the harmonizing ray of Venus' heart-centered love, merged with Cancer's intuitive, moonlit glow.

## **Crystal Companion**

Rainbow Moonstone — Known for the ability to balance emotions that are in line with women's cycles. This crystal is essential to heal, enhance intuition, and instill serenity. Closely linked with the "divine feminine" and lunar cycles, it is helpful to soothe and support transformation and creativity.

## **Affirmation**

"I devote myself to love that nurtures, protects, and feels like home."

## **The Celestial Method™ — Embodiment Practice**

Hold your rainbow moonstone crystal at your heart. Close your eyes and visualize silver moonlight descending from above, merging with a stream of peach colored light radiating from your chest. Feel these energies intertwine, flowing like a gentle river through your body.

Whisper the words Devotion, Nurture, and Belonging three times, and then speak your affirmation aloud: "I devote myself to love that nurtures, protects, and feels like home." Carry the crystal with you or place it near water to keep your devotion anchored in daily life.



## MERCURY IN CANCER ATTUNE

### **Key Terms:**

- ◆ Reflection
- ◆ Intuition
- ◆ Memory

### **Timeline:**

July 2 – July 11

### **Visual Description**

In the stillness of an underwater cavern, two majestic whales rise toward a glowing Mercury suspended above, sending ripples of sound and light through the turquoise waters. Their movements mirror one another, symbolizing reflection and communication carried through emotional depth. At the cavern's floor, three scattered shells open like vessels of remembrance, each holding the echo of a story waiting to be shared. Soft currents shimmer with silver light, while the Cancer constellation twinkles faintly in the background. This sacred aquatic space evokes the wisdom of ancestral memory, intuition, and the power of words spoken with compassion.

### **Card Message**

Mercury in Cancer asks you to lean into the language of feeling. Communication here is tender, intuitive, and reflective, often arising from the heart rather than the mind. This placement speaks of conversations that nurture, words that soothe, and messages drawn from deep wells of memory.

This card reminds you to slow your thoughts, listen deeply, and allow your intuition to guide your speech. At the same time, it cautions against letting sensitivity sweep you into overreaction — when emotions lead too strongly, words can blur truth or wound unintentionally. This card teaches the art of reflective listening: pausing, receiving, and responding with care, so that your words become vessels of clarity and compassion rather than reaction.

### **Color Ray**

Turquoise + Pink — illuminating clarity through the intellect of Mercury merged with Cancer's intuitive moonlight.

### **Crystal Companion**

Howlite — This crystal has a powerful ability to calm the mind, cultivate patience, and alleviate restlessness.

### **Affirmation**

“My words flow with attunement, memory, and intuitive truth.”

## **The Celestial Method™ — Embodiment**

### **Practice**

Hold howlite in your non-dominant hand. Close your eyes and imagine pink light streaming down through your crown, merging with turquoise light rising from the waters around you. Visualize these rays converging in your throat, creating a pool of clarity and compassion.

Whisper the words Reflection, Memory, Intuition three times, then repeat the affirmation aloud: “My words flow with reflection, memory, and intuitive truth.”



## MOON IN CANCER PROTECTION

### **Key Terms:**

- ◆ Feeling
- ◆ Nurture
- ◆ Sanctuary

### **Timing:**

July 12 – 22

### **Visual Description**

A majestic willow tree bends gracefully in the rain while casting its branches like a protective veil over the earth below. Beneath its sheltering canopy, four stone bowls cross a gentle stream where shimmering treasures reflect in the water. In the distance, the Moon in Cancer rises full and luminous, casting silver a radiance across the misty night sky, with the Cancer constellation glowing faintly beside it. Wild white blossoms bloom along the stream's edge, embodying purity, healing, and the promise of renewal. This tranquil scene captures the essence of emotional sanctuary, where the heart feels safe and the soul is gently held.

### **Card Message**

The Moon in Cancer is a placement that offers deep maternal protection and emotional grounding. Here, the Moon, the ruler of Cancer, amplifies sensitivity, intuition, and the need for nurturing connections.

This card calls you to honor the safe spaces in your life and the bonds that cradle you when the world feels overwhelming. It may also invite you to embody the protector yourself, becoming the steady presence for someone else. Just as the willow bends without breaking, true protection is flexible, compassionate, and rooted in love. At times, memories of past heartache can weigh heavily on the heart — but this card reminds you that protection also means knowing when to release. Letting go of what has already passed lightens your spirit, allowing you to feel the present more fully. In doing so, the sanctuary around you remains a space of renewal, peace, and love.

### **Color Ray**

Silver — doubled here, as both the Moon and Cancer share its frequency, representing emotional clarity, receptivity, and intuitive safety.

## **Crystal Companion**

Mystic Quartz – Use this crystal to clear negative energy, manifest clarity, and restore emotional stability after periods of hardship.

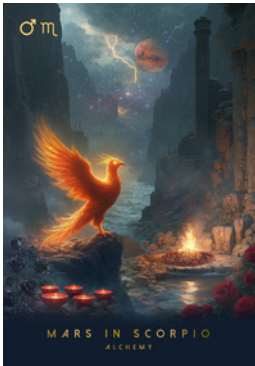
## **Affirmation**

“I am protected by love, guided by intuition, and safe within my inner sanctuary.”

## **The Celestial Method™ — Embodiment Practice**

Hold a mystic quartz in your dominant hand. Close your eyes and imagine a silver dome of moonlight forming around your body, like the canopy of a willow tree. Visualize this dome extending outward to cover your home, family, or anyone you wish to protect.

Whisper the words Protection, Nurture, Sanctuary three times, then repeat the affirmation: “I am protected by love, guided by intuition, and safe within my inner sanctuary.”



# MARS IN SCORPIO ALCHEMY

## Key Terms:

- ◆ Shadow Work
- ◆ Power
- ◆ Rebirth

## Timing:

October 24 –  
November 1

## Visual Description

In a shadowed canyon where water meets stone, a phoenix bursts into flame on a rocky ledge, its fiery wings igniting the depths. Above, Mars glows blood-red, framed by lightning that cracks through the heavens. At the canyon's base, a ritual fire pit glows beside the water's edge, where red roses bloom in defiance of the darkness, symbolizing passion and renewal. Black roses fade into the shadows, representing death and transformation. Alongside them, five red candles illuminate the river, carrying intentions of release and rebirth downstream. The Scorpio constellation hovers above, whispering secrets of alchemy, where destruction becomes creation,

and endings ignite new beginnings. The lightning bolt reminds us that lightning comes before thunder — strategy and clarity before the force of action.

### **Card Message**

Mars in Scorpio embodies the force of inner alchemy — the power to transmute shadow into strength. This placement channels energy into complete transformation, stripping away illusions to reveal the raw truth. It asks you to face your deepest desires and fears with courage, for within them lies your greatest source of power.

This card reminds you that transformation is not always loud or immediate. Like the flash of lightning before thunder, actual change often begins in silence, strategy, and reflection. You are being asked to find your inner light before stepping boldly into the next stage. Mars in Scorpio calls for fearless regeneration — but it also teaches that your most incredible alchemy happens when passion is directed with wisdom. Just as the phoenix rises from its ashes, you too are invited to reclaim yourself through surrender, courage, and radical self-trust.

### **Color Ray**

Crimson Red + Violet — fusing Mars' drive with

Scorpio's depth, creating the alchemical flame of transformation.

### **Crystal Companion**

Red Black Obsidian — This crystal anchors chaotic or excess energy into the earth while strengthening your sense of self and certainty. While going through transitions, it grants you resilience and trust in the unknown.

### **Affirmation**

"I transform my shadows into strength and rise renewed."

### **The Celestial Method™ — Embodiment Practice**

Sit in front of a candle flame. Hold a red black obsidian crystal in your dominant hand.

Visualize a crimson light rising from your root and merging with a violet flame at your heart. With each breath, imagine this alchemical fire burning away fear and limitation, leaving only clarity and strength. Whisper the words Alchemy, Power, Rebirth three times, then affirm: "I transform my shadows into strength and rise renewed."



## SUN IN SCORPIO

### VULNERABILITY

#### **Key Terms:**

- ◆ Endure
- ◆ Depth
- ◆ Renewal

#### **Timeline:**

November 2-12

### **Visual Description**

In a vast desert canyon under the blazing Sun, a reflective turquoise pool glimmers like an oasis, symbolizing the hidden emotional depths that can be found beneath. A jackrabbit sits at the water's edge, its ears alert, embodying both sensitivity and courage — the balance between survival and openness. Around the pool lie cracked six cantaloupe shells, remnants of nourishment and sweetness, representing the breaking open of protective layers to reveal tender truth. Towering cacti rise like guardians in the arid landscape, embodying resilience in harsh terrain. Overhead, the Scorpio constellation burns

brightly, a reminder that vulnerability can lead to strength and transformation through exposure.

### **Card Message**

The Sun in Scorpio shines light on your most hidden truths. Where Scorpio prefers to keep emotions protected, the Sun insists on illumination. This placement invites you to acknowledge the rawness of your being — the fears, wounds, and desires you may have buried deep within. Vulnerability, while uncomfortable, is the gateway to authentic renewal.

Like the desert itself, Scorpio energy teaches that sustenance and support often come from looking within. Beneath layers of defense lie hidden reserves of nourishment and strength. This card reminds you that when you dare to explore your inner depths, you discover the power to endure while transforming. Just as the desert reveals its hidden oasis only to those who continue through the journey, you are invited to embrace exposure as a source of strength. Your essence is not diminished when revealed — it becomes magnetic, capable of deep intimacy and soul-level transformation.

### **Color Ray**

Orange + Violet — the Sun's radiant vitality fused with Scorpio's depth, awakening courage through vulnerability.

## **Crystal Companion**

Desert Rose Selenite — Like white Selenite, it cleanses the aura of negative energy while the sand elements gives strength, grounding, and protection.

### **Affirmation**

“I open my heart with courage, knowing that vulnerability is my greatest strength.”

### **The Celestial Method™ — Embodiment Practice**

Sit in stillness near water or place a bowl of water before you. Hold desert rose selenite to your solar plexus. As you breathe, imagine the desert sun warming your chest, melting away any rigid armor you've built around yourself.

Whisper the words *Vulnerability, Depth, and Renewal*.

Place your hands over your heart and repeat the affirmation: “I open my heart with courage, knowing that vulnerability is my greatest strength.”



## VENUS IN SCORPIO MAGNETISM

### **Key Terms:**

- ◆ Mystery
- ◆ Desire
- ◆ Captivating

### **Timeline:**

November 13-21

### **Visual Description**

At the heart of a lush jungle temple, a glowing pool shimmers under the watchful gaze of a black panther, embodying both power and seduction. Around the water's edge, seven glowing candlelit coconuts radiate warmth, symbolizing devotion and offerings of intimacy. Orchids bloom in vibrant pink, representing sensual beauty, while deep crimson and pink crystals rest near the pool, anchoring beauty and sensuality. Above, the planet Venus glows against the Scorpio constellation, casting a mysterious light across the scene. The imagery suggests that true attraction is born not from surface charm, but from depth, mystery, and soul-level intensity.

## **Card Message**

Venus in Scorpio is the archetype of irresistible allure. This placement represents the power of intimacy, attraction by depth, sensuality, and strength. It also teaches the importance of discerning lust versus desire. While romantic connections thrive on physical attraction, this only scratches the surface of a deeper connection. To anchor this placement, love must be cultivated from within.

This card is a reminder that your magnetic energy is heightened when you embrace depth and authenticity rather than performing for approval. Desire here is not fleeting — it is a transformative force that asks you to dive into your shadows and discover beauty in the raw and unfiltered. At the same time, this card is here to tell you that magnetism can become distorted if it leans too far into vanity, control, or obsession. Just as the panther's gaze is mesmerizing yet fierce, attraction is most potent when tempered with self-respect and integrity. This card invites you to trust your natural magnetism — you do not need to chase, embellish, or control. What is meant for you will be drawn into your orbit by the force of your truth.

## **Color Ray**

Pink + Green— the harmony of Venus softens with Scorpio's transformative mystery, invoking a love that is deep, healing, and powerful.

## **Crystal Companion**

Kunzite— A stone that facilitates a gentle balance between the heart and the mind. With its high vibration, it will support your path to recovery that involves heartbreak and past unresolved matters.

## **Affirmation**

“My energy is magnetic, drawing to me only what honors my depth and truth.”

## **The Celestial Method™ — Embodiment Practice**

Sit near candlelight or create your own ritual pool by placing a bowl of water in front of you. Hold kunzite to your heart or your sacral chakra. Gaze into the water as if into your own depths, whispering the words Magnetism, Desire, Transformation.

Imagine your aura pulsing outward like ripples in the pool, carrying your authentic energy into the world. Repeat the affirmation: “My energy is magnetic, drawing to me only what honors my depth and truth.”



## SATURN IN PISCES TRANSCENDENCE

### **Key Terms:**

- ◆ Soul-Searching
- ◆ Surrender
- ◆ Integration

### **Timeline:**

February 19-28

### **Visual Description**

A majestic stag stands at the edge of a frozen lake beneath a vast starlit sky. Above, Saturn glows within the Pisces constellation, its rings radiating both discipline and mystery. The lake stretches outward, illuminated by a procession of eight glowing ice cups floating across the water — symbols of devotion, offering, and spiritual passage. Towering snow-capped mountains frame the horizon, blending strength and hope. The stag, dignified and resolute, reflects your capacity to balance structure with sensitivity, embodying resilience on the spiritual path. Yet the frozen lake beneath the stars carries

an air of uncertainty — is it solid enough to cross, or will it break beneath your steps?

### **Card Message**

Saturn in Pisces asks you to walk the delicate line between discipline and surrender. While Pisces seeks to dissolve boundaries in compassion and vision, Saturn requires structure and accountability. This placement appears when you are learning to anchor spiritual gifts into daily life. The frozen lake reveals the tension of this energy — progress may feel slow, uncertain, or fragile, and yet the only way forward is with patience and strategy. Saturn teaches you that timing is everything, while Pisces whispers that faith must guide your steps. Trust that you have the inner resources to navigate uncertainty with care. True transcendence is not found in escaping reality but in moving deliberately through it, weaving the sacred into every moment. By carrying Saturn's integrity and Pisces' flow, you embody integration — the balance of form and spirit.

This card is here to tell you that timing is everything, while faith is crucial to behold as you venture in life. The frozen lake reveals the tension of this energy — trust that you have the inner resources to navigate uncertainty with care.

## **Color Rays**

Blue + White— Blue gives support to your vision while incorporating white to hold onto the purity behind your purpose.

## **Crystal Companion**

Angelite — A crystal to use when you need a little faith and support from your guides. It provides you with protection from unstable environments and shields the body from excessive stress while cultivating patience.

## **Affirmation**

“I transcend illusion by grounding my spirit in truth and practice.”

## **The Celestial Method™ — Embodiment Practice**

Hold an angelite crystal in your left hand. Place a bowl of water before you and set it on a stable surface to honor Saturn’s grounding force.

As you breathe, imagine blue light flowing from above your crown and white light washing through your heart. With each exhale, whisper: Discipline, Surrender, Integration. Repeat the affirmation aloud: “I transcend illusion by grounding my spirit in truth and practice.”



## JUPITER IN PISCES ABUNDANCE

### **Key Terms:**

- ◆ Expansion
- ◆ Compassion
- ◆ Faith

### **Timeline:**

March 1-10

### **Visual Description**

An elephant, ancient and wise, stands at the edge of a tranquil shoreline beneath the vast branches of a banyan tree. Its roots anchor deep into the earth while its vines cascade downward, shimmering with starlight, as if the heavens themselves are woven into its canopy. Above, Jupiter radiates in the sky beside the Pisces constellation, illuminating the heavens with its benevolent glow. The sky glimmers with cosmic light, echoing the infinite blessings available to the soul. At the water's edge, nine lotus-like vessels float gently, glowing with turquoise luminescence—offerings carried by the tides of spirit. By the elephant's feet lie broken, crystal-like fragments, symbolizing the need to be mindful

and pragmatic with this expansive energy, lest abundance scatter without purpose.

### **Card Message**

Jupiter in Pisces is a blessing of expansion through compassion and surrender. Pisces softens Jupiter's ambition into divine flow, teaching that true prosperity arises when you align with universal love and inner truth. This placement reveals that intuition and compassion guide expansion, leading toward opportunities that nurture your soul as much as your path.

This card invites you to trust in the unseen currents of life, where faith becomes the bridge to miracles. Abundance here is not limited to material wealth but is found in empathy, creativity, and spiritual connection. The elephant, steady and enduring, reminds you that wisdom and patience are the foundations of abundance. You are being asked to recognize the blessings already surrounding you and to open your heart to receive more. Remember that abundance flows infinitely, both above and within you.

### **Color Rays**

Turquoise and Blue — Jupiter's ray inspires openness, trust, and higher connection to spiritual prosperity while merging with Pisces' ray, deepening intuition and authentic alignment.

## **Crystal Companions**

Blue Lace Agate— this crystal fusion supports wisdom, calm, spiritual expansion, and emotional stability as you navigate your higher purpose.

### **Affirmation**

“I open my heart to abundance, knowing the universe flows through me with infinite generosity.”

## **The Celestial Method™ — Embodiment Practice**

Close your eyes and envision standing at the shoreline beneath Jupiter’s radiant sky. Above you, the banyan’s branches glimmer with starlight, and the night feels alive with possibility. Hold blue lace agate in your dominant hand. Imagine turquoise and blue light enveloping your body, dissolving fears of lack. Speak gratitude for one blessing you already hold and one you are ready to receive. As you breathe deeply, feel the universe expand through you—an infinite source of abundance flowing without end.



## MARS IN PISCES SURRENDER

### Key Terms:

- ◆ Flow
- ◆ Compassion
- ◆ Divine Timing

### Timeline:

March 11–20

### Visual Description

A serene river winds through a sunlit valley, its waters carrying the quiet power of Mars softened by the dreamlike current. A series of ten lily pads creates a natural stepping path across the surface, glowing with subtle blue light as if guiding the way forward. Pink and white lotus blossoms bloom around them, symbols of purity and spiritual awakening. Golden koi swim gracefully beneath the surface, their movements embodying harmony and persistence without force. Above, Mars glows softly in the sky, while the Pisces constellation twinkles faintly, reminding us of the balance between action and

surrender. The tree arching over the river suggests patience, resilience, and the beauty of bending without breaking.

### **Card Message**

Mars in Pisces teaches that true strength is often expressed through softness. Here, the fire of Mars is tempered by the waters of Pisces, shifting action away from force and toward flow. This card asks you to release the need for control and trust that momentum can arise naturally when guided by intuition and compassion.

This card reminds you that surrender is essential—a conscious choice to align with a greater path. Surrender means releasing the fear of losing control or delays—not giving in to passivity. By conserving your energy and allowing your next steps to unfold in harmony with the natural flow of life, you create a path that is both strategic and soulful. When this card appears, it signals a moment to trust your inner wisdom, respond with grace, and allow the Divine to guide the timing of your actions.

### **Color Rays**

Red + blue – grants courage and intuitive clarity, an inspired action guided by spirit.

## **Crystal Companions**

Chrysoprase– helps you observe the world with a new perspective as you navigate delays and transitions.

### **Affirmation**

“I act with grace and intuition, allowing flow to guide my strength.”

### **The Celestial Method™ — Embodiment Practice**

Sit by a bowl of water with the crystal, chrysoprase, placed inside. As you dip your fingers into the water, imagine ripples of blue light carrying your intentions outward.

With each breath, envision red energy rising from your core, blending into the water’s flow. Whisper aloud three times: Flow, Compassion, Intuition. Then place your hands over your heart and repeat the affirmation: “I act with grace and intuition, allowing flow to guide my strength.”



# CONTINUE YOUR CELESTIAL JOURNEY

The Celestial Awakenings Oracle is a living tool and a pathway to embody the energies of your birth chart in real time.

This guidebook offers the foundational meanings to support your connection with the cards and astrology. For additional interpretations, such as the Planet-in-Sign cards, and deeper reflections, you are invited to explore the full guidebook and teachings within my work.

Together, this deck and these teachings form the heart of The Celestial Method™—a pathway to remembering and embodying your Soul-Centered Self

ACCESS YOUR EXTENDED GUIDEBOOK AND  
ADDITIONAL RESOURCES BY SCANNING BELOW



# ABOUT THE AUTHOR



Lumi Pelinku is an astrologer and transformation life coach devoted to helping women remember their inner radiance after loss, heartbreak, or life transition. Blending intuitive astrology, energy healing, and transformational coaching, Lumi offers a multidimensional path to healing through the sacred and the sensual—fusing crystals, color therapy, and fragrance into every cosmic teaching. She holds space for women to reclaim their light and live aligned with their soul's truth.

Her work has reached over 1.1 million readers through her monthly horoscopes for Brit+Co and has been featured in publications such as DailyOM, MindBodyGreen, Seventeen, Elite Daily, and The Knot.

Lumi is the creator of The Celestial Method™ and the Celestial Awakenings Oracle, designed to support deep transformation and self-remembrance. She lives in New Jersey with her family and two beloved cats, where she writes, paints, and dreams under the stars.

Connect with Lumi and explore her work at  
[www.lumipelinku.com](http://www.lumipelinku.com)